

in this issue ...

- Barbara Mertens, 1
- Virginia Montet, 3
- President's Message, 4
- MAA Gallery, 5
- Children's Halloween Activity, 8
- MAA Meeting, 9
- MAA Holiday Party, 9
- MAA Website Services, 9
- Upcoming Dates, 10
- Member Shows, 11
- New Members, 11
- Miniatures Show, 12
- Member News, 12
- Art News & Gallery Notes, 13

Featured Artist: Barbara Mertens

Interview by Judith Levine

Our MAA News featured artist this month is **Barbara Mertens**— a member of both the MAA and the Yellow Barn.

We met to talk at our Gallery in Wheaton. Mertens, who received a BFA in art and art history from Syracuse in 1970, was, at that time, primarily painting in acrylics. While studying at Syracuse, she showed her work in their annual juried shows. After completing her studies, she travelled to Abingdon, Virginia, a small Appalachian town, where she and her husband served our country for one year in Vista—the domestic Peace Corps. Involved in drawing and painting most of her young life, Mertens put her talent to work teaching after-school art classes to disadvantaged African-American youth. “New to teaching, I learned I had a knack for letting students do their own thing. All that they needed was a little guidance. I felt strongly about not telling them things had to be done one way and not another. I tried to provide them with as many different materials as possible, even talking the local funeral director into giving us transfer paper for grave rubbings!” After finishing their time in Vista, Mertens’ husband was accepted



Barbara Mertens



Winter Sunset, by Barbara Mertens

at Georgetown Law School, so they returned to DC. They would move to Oklahoma some years later where he taught law at the University of Oklahoma. “We were in Oklahoma for two years. The University prided itself on its new art gallery, and I enjoyed giving children tours there. I talked with them about colors, what they saw and how they

reacted. I didn’t care about the artists’ names and dates. There was a small Georgia O’Keefe painting of a cabbage that wasn’t much from a distance. However, when you got up close to it, the leaves looked like they were made of silk. This always intrigued the kids.”

Other than taking some classes that included what

SEE PAGE TWO

Mertens

FROM PAGE ONE

she describes as a “not-too-successful” attempt at pottery, Mertens virtually stopped painting for several years after she finished her Vista tour. In 1976, she began volunteering with a childbirth group from which she’d taken classes prior to the birth of the first of her two sons. (Her second son was born in 1981.) She taught art and began painting again. It was through the childbirth group that she began to produce some works again, including painting murals on classroom walls and one at the famed historic St. John’s Church at Lafayette Square near the White House. Mertens also actively encouraged her sons to participate in art which led her younger son to a BFA in painting and sculpture and a job with the National Gallery. “I strongly encouraged both boys in art, making sure



Beach House, by Barbara Mertens

they had plenty of good materials to work with ...I’m strongly opposed to giving kids newsprint and poor quality crayons.” After her return to DC, the artist continued taking classes. She learned that she both loved and had the knack for working with pastels--now her preferred medium-- while taking a class with Ann Wallace at the Yellow Barn. “By 2008, I was finally getting restless to really paint again. I went to a local artist, Dot Proctor, and asked for help getting started again. She gave me classes, basically letting me do my own thing, giving me pointers here and there. She delivered large doses

of praise. I bravely entered a painting in the Glen Echo Park Labor Day Show and it sold within the first fifteen minutes of the reception. That was it! I was ready to fly.” Proctor invited Mertens to show her pastels at one of Proctor’s studio shows. Mertens glows when she talks about that show. “She threw me into the deep end of the pool to figure out publicity, selection of paintings, hanging and lighting. I managed it all and proudly greeted guests on the day of the show. People really took my work seriously, and four paintings were bought. A man who admired my work but didn’t buy anything, made up for it by singing a song about



Canyon, by Barbara Mertens

the paintings while standing in the street!” Following that, Mertens began taking classes with Ann Wallace who turned her on to pastels. The rest, as the saying goes, is history. Mertens now studies regularly with Yellow Barn’s Glen Kesler, whom she describes as being very supportive and encouraging. “He is an excellent teacher, critic, and supporter. He keeps me grounded in the basic skills when I have a tendency to get carried away, pushing around the beautiful pastel colors. We work together very well.” I asked Mertens who among the well-known artists has influenced her

work. Her first response was “I don’t think I can name names.” But then she thought for a moment and told me if she walked into a gallery she would find herself drawn to Picasso, the Ash Can School, Richard Deibenkorn, Washington Color School member Gene Davis. The one thing that runs through the work by those artists is the use of simplified shapes to create a feeling that resonates in the viewer’s mind. And, it is typical quality found in Mertens’ works. “What is my style? Well, I usually tell people my subject is recognizable, but I’ve messed with it. I’ve added colors, blurred shapes, simplified some

areas. Exact representation isn’t my goal at all. The brain doesn’t need a body or story. The brain sees light, shapes, and it [just] means something, it just reacts.” The relationship of her work to most of the artists to whom she relates so strongly is in the choices of colors and tones. With the exception of Davis, all of the artists chose bold patterns, strong colors but muted tones. Commenting on her focus on pastels, we discussed the issue of working in that medium. Pastels are so often talked about as one of the more difficult mediums to master. It is extremely

SEE PAGE THREE

Mertens

FROM PAGE TWO



Weston Toadstool, by Barbara Mertens

easy to find the paper covered in 'mud'. Mertens said, "Pastels are fairly unforgiving. If you do not carefully plan the order in which you are going to lay down your colors, or if an area just isn't right, you may not be able to make corrections. I make mistakes a lot, and start over a lot. Some pictures just never work out. But enough do to make all the effort and mess worth it." She told me that she prefers a very good tooth in her paper as she presses deep with her pastels. The paper also has to be able

to support the acrylic she occasionally adds on top of the pastel pigments. Mertens' paintings can be classified as representational because the viewer will recognize a house or a fence, but as with the late Andrew Wyeth, I can see what she means when she casts her work as abstract. Both artists describe their work as shapes, textures, colors, and patterns, and both say it is the viewer's own mind that sees these elements as actual objects. There is a sense of mystery

in most of Mertens' works. I almost always find myself seeking what the artist left out as much as what she put in.

Mertens hopes that the future will bring increased sales. To help with her goal, she plans to show her paintings as often as possible. That, she thinks, that will lead to greater recognition and increased sales. Controlling her difficult medium is high on her priority list and she feels that increasing her personal sense of self-control is part of the key to reaching that goal. "I [think I] lead with my emotion, paint with my emotion and I want to be more in control." It is MAA's good fortune that Mertens' now adult children live in this area so she and her husband plan to remain here. Please come into the MAA Gallery and see the beautifully mysterious paintings of Barbara Mertens.

MAA GALLERY

Featured Artist for December:

Virginia Montet

Due to the move from our original Gallery and the longer than normal length of the first show in the new MAA Gallery, our coordination of the artist's interview in MAA News with their time as the Featured Gallery Artist got out of synch.

As a result, the MAA News' August Featured Artist interviewee, **Virginia Montet**, will be the Featured Gallery Artist for the December Gallery show. Ms. Montet had been scheduled as the next Featured Artist in the Gallery when we vacated the old Gallery in May so we published her interview in August not knowing when we might be able to resume the operation of the MAA Gallery. Now that we are in our new location

we will be able--beginning with the January show--to return to our normal practice of coordinating the MAA News Featured Artist with the current MAA Gallery Show. The next featured artist in the Gallery will be Sandy Cepaitis.

Virginia, who is originally from France, goes by the artist's name of Fleur de Virginie. She shares

her love of flowers and portraits in oil pastels for our first Featured Artist of the Month's show in our new MAA Gallery location at Westfield Wheaton Mall. "I particularly love the vibrant colors of oil pastels because I can work directly with my fingers and make one with my art", she said. "I hope my

SEE PAGE FOUR



Rose Orange, by Virginia Montet

Montet

FROM PAGE THREE



Night Clubbing, by Virginia Montet

paintings convey as much spontaneity and warmth as I put into them.”

Always an artist in her heart, she has lately devoted more time and energy to her art. Self-taught at first, she studied with pastel artist L. Sterlikova and took classes at the School of Botanic Art of Brookside Gardens and at Montgomery College.

She is also fond of doing

portraits and loves the thrill of catching the likeness of the subject. She aspires to do murals like the one that was on display at Zed’s Café in Silver Spring. See the August MAA news for more details about our featured artist and to see the work she displayed at Zed’s Café in

Silver Spring.

We have included some additional information about Virginia along with some additional examples of her work.

Please plan to attend the opening reception for Virginia Montet’s show in Sunday, December 9 from 1 PM to 5 PM, at the Gallery.

President’s Message

I hope everyone had a terrific Thanksgiving Holiday. Now—on to the rush of the holidays! I hope you are more prepared than me. I actually don’t know where the fall went—I still have some plants I bought in a fit of ambition that need to get into the ground before it freezes!

Actually I do know where some of my time has gone—the wonderful new site of the MAA Gallery at Westfield Wheaton. We opened our inaugural show on October 19, and the reaction of visitors, and terrific accompanying sales, have been wonderful. A lot of our old clients have come back and are as pleased as we are about our return and with our fabulous new space.

Our next Gallery show will open on December 3 with Featured Artist Virginia Montet. It will also have many new participants who have been trained in Gallery procedures over the last couple of weeks. We had about 40 artists in the November show, and I think we will have at least 60 in the December show. And, of course, there’s always room for more. So if you would like to show your artwork in the Gallery sometime, please contact me at hirshcathy@gmail.com.

Instead of the usual business meeting at Plaza Art, our practice every year in December is to have a party to celebrate the holiday season. This year’s celebration will be on Thursday, December 13 at

the MAA Gallery in Westfield Wheaton from 6:30 to 9:00 pm. Everyone is welcome, including significant others and family/friends. I hope you will be able to make it—it is always a fun time with artist friends and family celebrating one another and the season. Just bring something savory or sweet to share, and also something to drink. MAA will also provide additional foodstuffs.

And if you can help before or after the party, give a “shout-out” to Sara Becker at thebeckers6400@verizon.net who is the “hostess in charge.”

If you haven’t been to the MAA Gallery, it is not listed on the Mall directory yet. We are closest to Entrance 1. Just look for DSW Shoes

and Dick’s Sporting Goods on the map—the Gallery is between them on the first floor.

We need photos! Photos of your artwork and also photos of MAA events. We’ll use them for the website, our Facebook page, and for the newsletter. We can talk about what a vibrant and talented community we have but pictures really tell the story much better. So unleash your shutter bug and send your photos to Michael Shibley at mfs-art@comcast.net.

I hope to see you at the Holiday Party at the MAA Gallery!

Till next time,

Cathy Hirsh



The MAA Gallery, open for business.

The MAA Gallery

If you've ever thought you might want to participate in the MAA Gallery, but have not, now is the time to make that effort. The space is absolutely gorgeous. It's getting great traffic--and we are making sales!

Don't wait—the holiday season is here, and your work could be in the December show. It truly is an opportunity you should not pass up.

The following provides a brief overview of the Gallery and how members can participate. Feel free to contact Cathy Hirsh (hirshcathy@gmail.com) if you want to be a member of the Gallery, or if you have any questions or ideas for the Gallery.

What may be shown in the Gallery?

Original paintings are displayed on the walls and on the miniature stand. We also have original paintings and giclees/prints in the artist bins. Sculpture and glass mosaics are also on display, and we also have art cards for sale.

Who may exhibit in the Gallery?

Any MAA member whose dues are current may exhibit up to the amount specified (usually 5-8) original pieces for the walls. Miniature paintings and sculpture pieces do not count toward this maximum and can also be displayed. Cards are not limited as long as we have space in the card racks.

Are members required to "gallery sit" if their work (wall, bins, or cards) is in the Gallery for sale?

Yes, absolutely. Two 4-hour shifts per show are required. You can sign

up for your Gallery times using a Google Calendar created for this purpose. Contact Michael Shibley at mfs-art@comcast.net to get started.

Is there a cost for showing work (not cards or bin work) in the Gallery?

No, the only requirements are that member dues be current and that the sitting obligation be met. MAA will take 25% commission on sales.

What is the cost for displaying bin work or cards?

There is a \$30 fee to display bin work or cards for sale from December, 2012 to September 30, 2013. Artists participating in the bins will each have a sign with their name to spotlight the location of their bin pieces. Up to 20 pieces per artist may be displayed in the bins—the pieces should be changed at least every 4 months.

How do I know the dates for the upcoming shows?

Each month there is a section in the MAA newsletter called "Upcoming Dates." In this section, the show dates for the next three to four months are shown. The dates are also shown in the MAA website calendar accessible from the Home page or the Events page. Remember that your two shifts for each show should occur between the opening day and the last day of the show.

How long will individual wall pieces be on display?

Shows are generally four weeks long, timed to begin around the beginning of the month and to close around the end of the month. Bin work should be changed every four months. Miniatures should also be changed with each show.

SEE PAGE SIX

Gallery

FROM PAGE FIVE

How often are artists paid for work that is sold?

Sales are reviewed at the end of each month and artists generally receive their money (sale amount minus 25% commission) in the first week of the month following the sale. If the amount owed to the artist is less than \$10, MAA holds the amount owed until \$10 is reached. This is done to avoid issuing checks for minor amounts. If, after 6 months, \$10 has not been reached, the artist is sent the amount owed.

Does the original work for the Gallery walls have to be framed?

No, canvas pieces do not have to be framed, but the sides need to be finished with either paint or tape in a professional manner. All pieces to be hung should have wires. Simple, nice looking, frames are fine—elaborate frames are not required.

Once a piece has been displayed in the Gallery, can it be shown again?

Yes, work can be shown in the Gallery again in four shows. For example, if a piece was in the January show, it can be shown again in the May show.

If I can't make the drop-off or pick-up dates for a show, can I still participate?

Yes, first of all, make sure your pieces are registered by the date indicated for that month's show. Then bring your work into the Gallery before the drop-off date. Just put a handwritten label on the lower right-hand side of each piece with your name and the name of the piece, and place in the back room. If you cannot make the pick-up times after the show is over, your pieces will be placed in the back for your pick up later.



The MAA Gallery 2012

How do I register my pieces?

We register pieces using our new online show registration feature introduced over the summer on our website. Cathy Hirsh will be providing walk-thru demos on how to use the new capability a number of times during November (contact her at hirshcathy@gmail.com if you would like to attend). Using this software greatly reduces the administrative effort required for the monthly shows, and it is critical that everyone use this new capability.

Is all submitted work hung?

Because the Gallery space is large, most pieces are hung. We make sure that all participating artists are represented as fairly as possible while still ensuring a coherent and pleasing show display. Pieces not displayed are placed in the back and brought forward as sales are made or if we want to change the display by bringing in new work. Work not shown in a given show is eligible for display the following show. And we welcome all participants to help hang

the show at the dates/times indicated.

How many sitters are in the Gallery at one time?

One, and preferably, two.

What is the procedure for signing up to gallery sit?

We use an online Google calendar for members to schedule their sitting times. If you will be participating in the Gallery for the first time, we will give you instructions on how to use the calendar to schedule your sitting times as part of your Gallery training.

Gallery

FROM PAGE SIX

What are the shifts for Gallery sitting?

The Gallery is open 7 days/week with two 4-hour shifts each day. Monday through Saturday, the Gallery is open from noon to 8 pm with shifts: noon to 4 pm and 4 pm to 8 pm. On Sunday, the Gallery is open from 11 am to 7 pm with shifts: 11 am to 3 pm and 3 pm to 7 pm.

How far in advance can I sign up for my sitting times?

Because the online calendar contains future months, you can sign up for your shifts many months in advance if you want. Just select the month and pick your shifts. It's really best to schedule your shifts in advance—that way you can be sure to find times to fit your personal schedule. At the very least, please have your selected shifts on the sitting calendar before you bring in your work for the coming show. If you have not signed up for your

shifts before dropping off your work, we will ask you to commit to the times available at the drop-off.

How will I know how to open or close the Gallery or make sales?

We have written procedures for handling all Gallery operations. All new participants are trained by an experienced person in the month before they join the Gallery and are then paired with an experienced sitter initially so that they can become very comfortable with the procedures. We'll have you feeling like an "old hand" in no time!

What should I do when I'm sitting in the Gallery?

Your first responsibility is, of course, to take care of Gallery visitors and customers. Welcome each visitor as if they are visiting your home, letting them know about MAA and the Gallery (MAA is a non-profit group of local artists, the Gallery is volunteer-run, shows are

changed each month), and also letting them know you are available if they should have any questions or need help. You can also ask them if they are artists themselves or have friends or relatives who are. Often, the answer is yes. If so, tell them about Gallery participation. You can also let them know that we maintain an email list to announce future Gallery shows and receptions, and if they're interested, suggest they sign our guest book with their name and email (we do not share our email list).

When I'm not busy with visitors/customers, what else can I do?

Light housekeeping as needed—we need to make sure the Gallery is neat and good looking at all times. We have brooms in the back if needed and cleaning materials if you notice smudges on the windows or paintings or dust on surfaces. On occasion, there might also

be "Gallery-work" like placing labels or stamps on postcards. You can also do art work in the Gallery—in fact, visitors are excited to see our artists at work. We will have an "artist station" with a studio easel, side table, and chair. You can also bring your own book to read. But whatever you do, don't hide behind the counter! Be available to visitors.

Can I eat and drink in the Gallery?

You should avoid bringing anything that would bring food odors into the Gallery, and it's best to have something to eat before you come for your shift. Eating a snack like a fruit/cookie or having a soda or coffee is fine—just keep it below the counter top. We

also have bottled water available in the back.

What is the Gallery Featured Artist opportunity and how can I become a Featured Artist?

Each month's Gallery show has a Featured Artist, whose work is hung in a special part of the Gallery. Members who want to be a Featured Artist place their names in the Featured Artist box at the Gallery, and names are drawn. There are additional obligations to being a Featured Artist, for example, sit 4 times instead of 2, host the reception, etc. Currently, we have Featured Artists selected for the Gallery through March 2013. The Gallery Featured Artist opportunity will be discussed in more detail in a future newsletter.

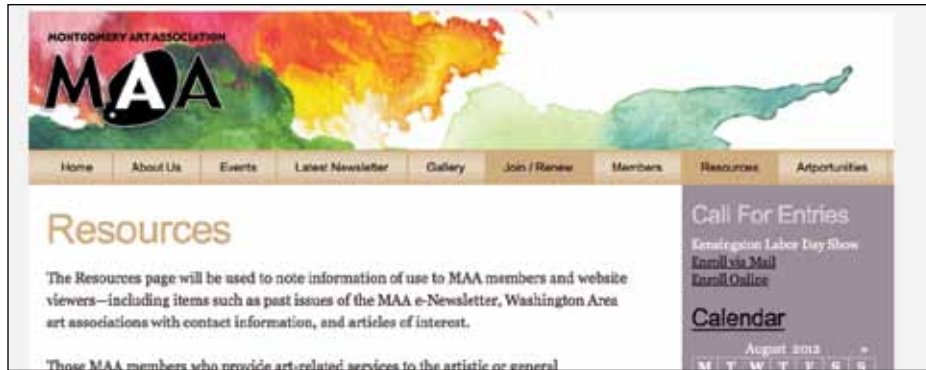
The deadline for submissions for the January newsletter is December 15.

MAA Entertains Children at the Gallery

MAA members directed children's art projects as part of Westfield Wheaton's Halloween celebration.



Calling all Instructors, Commission Artists, and Other Art Services Providers ▼▼▼▼▼▼▼▼



Are you an art instructor, do commission pieces, or provide printing services? How about graphic design, web design and implementation, custom photography, art restoration or art

consultation?

If you provide any art-related services, take advantage of the new feature on our website—FREE services listings for members.

Just email the services you would like listed, along with contact information, to Cathy Hirsh (hirsh-cathy@gmail.com).

“ Artist Quote of the Month

“If you could say it in words, there’d be no reason to paint.”
—Edward Hopper



Self-Portrait, Edward Hopper

MAA MEETING december 13, 2012

Please be reminded that the next MAA meeting will be our annual Holiday event at the Gallery. The regular meetings at Plaza Art on Rockville Pike will resume after the New Year. Please see the discussion about the event below.

Annual MAA Holiday Party

December 13, 6:30-9 pm
MAA Gallery, Westfield Wheaton

This is always a fun event, but it should be especially fabulous in our wonderful new Gallery space in Westfield Wheaton.

The party will be a pot luck heavy appetizer type of event with MAA providing a meat dish (usually sandwiches) and a cake. We ask that attendees bring something savory or sweet to eat and something to drink as well.

Sara Becker, past MAA president and current Activity Chair, and Roxanne Ando, our Hospitality Chair, would welcome volunteers for set up and cleanup. Please contact Sara at sara.becker.art@gmail.com if you are able to help.



REMEMBER
THESE:

UPCOMING dates

December 3:

Opening date for December Gallery Show—Featured Artist, Virginia Montet

December 9:

Children's Craft Activity, outside the Gallery, noon to 4 pm

December 9:

December Gallery Show Opening Reception, 1 to 5 pm

December 13:

6:30 – 9:00 pm--December Holiday Party: MAA Gallery Space in Westfield Wheaton,

Tentative dates—

March-April—Members' Show at the Artistic Gallery in Wheaton

May 20 – June 29, 2013—Members' Show at Brookside Gardens.

MAA GALLERY SHOWS AND DATES

The Gallery is open 7 days/per week—Monday through Saturday, noon to 8 pm, and Sunday, 11 am to 7 pm.

To show in the Gallery, you need to be a current MAA member and must "Gallery-sit" at least two 4-hour shifts. If, in addition to "wall" pieces, you would like to display bin works and cards, there is an additional \$30 fee for the period from December, 2012 to September 30, 2013 (to help pay for Gallery furnishings). For works sold, MAA takes its standard 25% commission. If you've not previously shown in the Gallery before, you will need to get trained on Gallery procedures. If you are interested, please contact Cathy Hirsh at hirshcathy@gmail.com.

December: Featured Artist—Virginia Montet (Fleur de Virginie)

Information about pieces (title, media, price) to Elizabeth Stecher (estecher7@verizon.net), Friday, 11/30

Drop-off (or pickup for the previous show)—Sunday 12/2, 5-6 pm or Monday 12/3, 10-noon

Show hanging – Monday, 12/3 afternoon

Show opening reception– Sunday, 12/9, 1-5 pm

Last day of show—Sunday, 1/6 (this is a longer than a normal show, given the timing of the holidays)

January : Featured Artist—Sandra Cepaitis

Information about pieces (title, media, price) to Elizabeth Stecher (estecher7@verizon.net), Friday, 1/4

Drop-off (or pickup for the previous show)—Sunday 1/6, 5-6 pm or Monday 1/7, 10-noon

Show hanging – Monday, 1/7 afternoon

Show opening reception– Sunday, 1/13, 1-5 pm

Last day of show—Sunday, 2/3

February: Featured Artist— Sara Becker

Information about pieces (title, media, price) to Elizabeth Stecher (estecher7@verizon.net), Friday, Feb 1

Drop-off (or pickup for the previous show)—Sunday 2/3, 5-6 pm or Monday 2/4, 10-noon

Show hanging – Monday 2/4 afternoon

Show opening reception– Sunday, 2/10, 1-5 pm

Last day of show—Sunday, 3/3

March: Featured Artist— Michelle Zugrav

Information about pieces (title, media, price) to Elizabeth Stecher (estecher7@verizon.net), Friday, Mar 1

Drop-off (or pickup for the previous show)—Sunday 3/3, 5-6 pm or Monday 4/4, 10-noon

Show hanging – Monday 3/4 afternoon

Show opening reception– Sunday, 3/10, 1-5 pm

Last day of show—Sunday, 3/31



Tree in the Mist, by Natalie Falk

MEMBER SHOWS

MAA member, **Natalie Falk** will be showing her work in a joint show with her son, Ryan Owen at The Globe in Berlin, MD. “Generations: Creative Perspectives by Mother and Son” will feature Natalie’s oil landscapes and Ryan’s unique photographic visions. The show will December 1 and run through January. Opening reception will be Friday, December 14, 5:00 to 8:00 pm. and will coincide with the monthly Berlin “ArtWalk.” The public is invited.

MAA Art

If you are interested in having your work included in *MAA News*, please send one or two high-resolution (300 dpi) jpegs to nmfalk@comcast.net. Please label your submissions with the title and your name.

Welcome New MAA Members!!!

With the reopening of the Gallery we have, once again, gotten a huge number of new members who want to take advantage of the opportunities that MAA provides. Below is a list of the new members who have joined recently. Please welcome them to the best art association in the Washington Metropolitan area. Our expanding list of new members is helping us to grow your MAA into an even better association.

A growing membership is important to our association. Why? It’s important because it allows MAA to continue to expand the benefits it can offer to YOU—the member. The new website, more exposure for your artwork through shows and the Member Gallery, improving our shows, improving our membership records, making show registrations easier and more efficient are just a few of the activities undertaken on your behalf.

Those developments are not possible without continued growth in our membership. As can be expected, MAA loses a certain number of members each year and those have to be replaced just to allow us to stay even. Here is the deal. **When we lose ONE member—we have to recruit TWO new ones in order to grow.** That’s a tough challenge in the membership world. But MAA can continue to grow and expand its offerings if the Association can continue

to expand its reach into the large artist community in the Washington DC area. **Help make that growth a reality and recruit a new member TODAY!!** You will feel good about it and your art association will benefit.

Remember: There is no better membership deal in the Washington area art association market than MAA!!!!

Welcome to the following new MAA members:

Rosana Aguilar
Rocio Arrospide
Jing-Ji Chen
Michael Colella
Susan Crawford
Joseph Edmunds
Rimber Galdos
Joseph Jones

Margo Kabel
Marianna Kastrinakis
Pamela Mason
Phyllis McElmurry
Karen Norman
Behrouz Serabi
Susan Taylor

We apologize to any members whose names are not listed. We will catch up with you next month.

MAA—serving its members since 1954.

MAA Members Lead Miniatures Exhibition



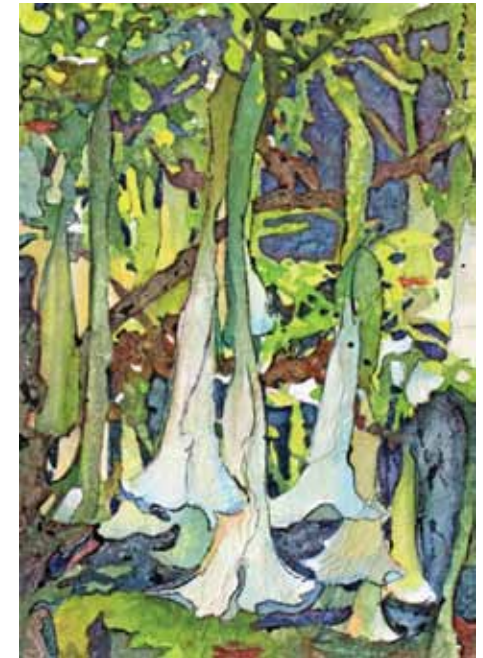
MAA members enjoying themselves during Sunday's reception. From left to right are Jing-Ji Chen, Nar Steel, Elizabeth Steel, Sara Becker, and Gale Bell.

The annual exhibition of the Miniature Painters Sculptors and Gravers Society is now on display at the Strathmore Mansion through December 29. This is the 79th Annual International Exhibition of Fine Art in Miniature. MAA should be very proud that two of its members are actively involved in this show. **Nar Steel** is President of MPSGS and **Elizabeth Stecher** is in charge of Publicity. The opening reception was held on Sunday, November 18 with a very large and excited audience who turned out to see these creative works of art in miniature. If you have never seen the show, give yourself a treat during the holidays. You will be glad you did.

MAA Art



Elephant, by Julie Smith



Trumpet Flower, by Debra Halprin

MEMBER NEWS

MAA regrets to inform the membership of the passing of beloved member **Mizi Kiper** on Thursday, November 22. She passed away peacefully in the presence of her family after a long illness. Mizi, a regular volunteer contributor to our big show at the Kensington Armory, will be missed by all who knew her. A Memorial Service was held for Mizi on Thursday, November 29. Our thoughts and prayers go out to her family.

Recently, MAA member and long-time Board Member and Secretary **Margie Richards**, relocated to the Midwest to be closer to her daughter. MAA thanks Margie for her years of contributions to the association. We will miss her but we wish her good painting in her new home!



Beets, by Cathy Hirsch



GALLERY NEWS AND NOTES

This part of the newsletter is designed to provide you with art news and information about interesting shows at the many local art galleries. If you are aware of an event, news or an exhibit, large or small, that you think would be of interest, please send an email to JULevineRN@aol.com. If going to one of the galleries you have not been to we urge that you contact the gallery or its web site to ask about directions and transportation. Many of the galleries in DC are accessible via Metro and parking can be a problem. Unless otherwise noted, admission is free.

The Corcoran Gallery of Art

510 17th St NW, Washington, DC (202) 639-8574

Enoc Perez: Utopia

November 10, 2012–February 10, 2013

An American painter born in Puerto Rico, Perez's paintings are a mixed media of paint, photos, images from magazines. This exhibit combines the Marina Towers paintings and an original commission completed for Washington's Watergate complex.

Ivan Sigal: White Road

November 3, 2012–January 27, 2013

This American photographer travelled around Central Asia between 1998 and 2005, document the changes the diverse peoples were experiencing after the collapse of the Soviet Union. The term 'white road' is used by the people of this region to wish a traveler a safe journey.

The Phillips Collection

1600 21st St., NW, Washington, DC 20009 Information- 202-387-2151 \$12 -adults, \$10 -62 and over and students, free for members and visitors 18 and under

Per Kirkeby Paintings and Sculpture

October 06, 2012 - Jan 06, 2013

This exhibition of Danish artist Per Kirkeby features both sculpture and paintings. The artist is, among other things, a geologist and a poet. Both of these pursuits can be seen in his use of luscious colour and abstract building forms. While you are at the Phillips, you might also want to take in the small exhibit (11 in all) of photographs from the Joseph and Charlotte Lichtenberg Collection.

Intersections

Intersections, a series of projects explores the way two, sometimes radically, different objects relate and

join together. Each project explores new traditions, modern and contemporary art practices, and museum spaces and artistic interventions. It branches into both traditional and non-tradition exhibition spaces with some surprising and intriguing results.

Xavier Veilhan (IN)balance

Nov 03, 2012 - Feb 10, 2013

Veilhan is a French sculptor and this is the first major gallery exhibit of his work in the United States. The 18 sculptures in this show

allow the visitor to experience his unusual and inventive vision of the world around him. Prepare to be greeted by a huge red bear as you enter .

The National Gallery of Art

4th and Constitution Avenue NW, Washington, DC 20565 General Information: (202) 737-4215

Pissarro on Paper

September 30, 2012– March 31, 2013

This French Impressionist is best known for his landscape
SEE PAGE FOURTEEN



Wooded Landscape (Aquatint), by Camille Pissarro

GALLERY NEWS AND NOTES

FROM PAGE THIRTEEN

scape painting. This show gives the visitor an opportunity to see his equally beautiful etchings.

Shock of the News

September 23, 2012–January 27, 2013

Italian journalist F. T. Marinetti published his Futurist Manifesto in 1909, and in 1913, Picasso became one of the first painters to embrace this new vision of art. Incorporating the use of newspaper images and a whole new way of seeing figures and objects, it would shake the art world.

Höch, John Heartfield, Kurt Schwitters, Robert Rauschenberg, Jasper Johns, Dieter Roth, Laurie Anderson, Sarah Charlesworth, Adrian Piper, and Robert Gober.

Imperial

Augsburg: Renaissance Prints and Drawings, 1475–1540

September 30–December 31, 2012

In the Tower: Barnett Newman

June 10, 2012–February 24, 2013. This is part of the Gallery's ongoing series highlighting artist from about 1950 to present day.

Modern Lab: The Box as Form, Structure, and Container

November 10, 2012–May 12, 2013
East Building Upper Level

Hirshhorn Museum and Sculpture Garden

Independence Avenue at Seventh Street SW
Information: 202-633-1000 or 202-633-5285 (TTY)
This gallery focuses on contemporary artists.

Ai Weiwei: Circle of Animals/Zodiac Heads

April 19, 2012 to February 24, 2013
The twelve heads represent the Chinese zodiac. Ai was inspired by the a set of eighteenth-century heads from the Qing

dynasty originally placed in the Forbidden City's Yuanming Yuan (Garden of Perfect Brightness) but these 10 foot high pieces are most definitely his own vision.

Ai Weiwei: According to What?

October 2012 to February 2013

"This major survey of his work will include examples from the broad spectrum of his artistic practice, from sculpture, photography, and video to sitespecific architectural installations, and aims to reveal the rich and varied contexts that he has continuously interwoven." Please come and see why the government of China is so afraid of this remarkable artist.

The Sackler Gallery/ The Freer Gallery

1050 Independence Avenue, SW. 202-633.1000
The joint galleries house one of the world's great collection of Asian arts.

Perspectives: Ai Weiwei

May 12, 2012–April 7, 2013, Arthur M. Sackler Gallery

A companion to the Hirshorn's Circle of Animals/Zodiac Heads. "Noting the abundance of antique wood on the market, Ai had a number of pieces transported from Guangdong to his studio in Beijing to create a series of objects and installations. Fragments is a culmination of that body of work. Working with a team of skilled carpenters, Ai turned pillars and beams of ironwood (or tieli) salvaged from several dismantled Qing dynasty temples into a large-scale, seemingly chaotic work, which he calls an "irrational structure." Yet examined more closely, one discovers that the installation is an elaborate system of masterful joinery and delicate balance relations. Seen from above, the entire complex is anchored by poles marking out the

borders of a map of China. Through his simultaneously destructive and creative process, Ai highlights the bewildering reality that we live in the midst of a world undergoing rapid spatial and social transformations."

Enlightened Beings: Buddhism in Chinese Painting

September 1, 2012–February 24, 2013

Freer Gallery of Art
This exhibition of work, mostly from the First Century BCE focuses on four main categories of enlightened being. They are the Buddha himself, bodhisattvas, luohan (protectors of teachings of the Buddha, and the Chan (Zen) monks and lineage masters.

Roads of Arabia: Archaeology and History of the Kingdom of Saudi Arabia

November 17, 2012–February 24, 2013 - Arthur M. Sackler Gallery
Though not ignoring the history of the kingdom in

SEE PAGE FIFTEEN

GALLERY NEWS AND NOTES

FROM PAGE FIFTEEN

Islamic times, this exhibition focuses on objects times from 5000 BCE to 1200CE. It offers a fascinating journey through the ancient **trade** routes and helps the visitor understand what and how events and contacts helped shape modern Saudi Arabia.

National Museum of the American Indian

Fourth Street & Independence Ave, S.W. Washington, DC 20560 202-633-1000

A Song for the Horse Nation

October 29, 2011-January 7, 2013
Allow yourself to explore the relationship between Native Americans and horses. This exhibit includes regalia, a 16 foot high Sioux tipi, and paintings from the time of Columbus to modern day.

Arctic Journeys/Ancient Memories: The Sculpture of Abraham Anghik Ruben

Inuvialuit Abraham Anghik Ruben (b. 1951) shares with and takes the viewer on a journey of both ancient Norse adventurers and the Inuit (Inuvialuit) whale hunters who are his own First Nations people. It is, as are so many First Nations works, a spiritual journey. Through his sculptures Ruben allows us to see the exploration, migration, and displacement that occurred voyages across time and place, and into the spiritual realm.

National Museum of African Art

950 Independence Avenue, SW Washington, DC (202) 633-1000

Lalla Essaydi: Revisions

May 9, 2012 - February 24, 2013
Born in Morocco, now living in New York, Essaydi explores the dichotomy of her Western and East-

ern cultures. Seeking to destroy stereotypes, she infuses her painting and photography with her personal experiences, giving the viewer an intimate look at women in Eastern society.

Renwick Gallery

1661 Pennsylvania Ave NW, Washington, DC (202) 633-7970
The Renwick's main focus is on the decorative arts.

40 Under 40-Craft Futures

July 20, 2012-February 3, 2013
All 40 of the works in this show have been created since 2001. This is also the year the Renwick's contemporary crafts program was established. It promises to demonstrate once again why the old definitions of craft and art have almost become obsolete.

National Portrait Gallery/Smithsonian American Art Museum

8th St. at F St., NW, Washington, DC 202) 633-1000 (voice/tape) The National Portrait Gallery (NPG) and the Smithsonian American Art Museum (SAAM) both contain many permanent exhibits that easily allow for many visits. These two connected galleries, which are part of the Smithsonian Institute, form a national treasure of American paintings and sculpture. The buildings just reopened recently after a nearly 6 year renovation which has restored them to their original states. This included restoration of the exquisite stained glass windows in both ceilings and walls, and the repair of the beautiful floor and wall tiling.

A Will of Their Own: Judith Sargent Murray and Women of Achievement in the Early Republic

April 20, 2012 through September 2, 2013

Abstract Drawings

June 15, 2012-January 6, 2013
Pulled from the American Art's rarely seen permanent collection, this 46 work collection includes modern masters such as Gene Davis, Man Ray, and Willem DeKooning.

Portraiture Now: Drawing on the Edge

November 16, 2012 through August 18, 2013
This show is the 7th in the gallery's series which explores the work of the new generation of portrait artists. The featured artists are Mequitta Ahuja, Mary Borgman, Adam Chapman, Ben Durham, Till Freiwald and Rob Matthews.

The Civil War and American Art

November 16, 2012-April 28, 2013
Anchored by notables including Frederick Church and Winslow Homer, the viewer will journey through the entire period of this difficult time in the

SEE PAGE SIXTEEN

GALLERY NEWS AND NOTES

FROM PAGE SIXTEEN

American story. There are 58 paintings and 18 photographs that scan this era from prewar to the often painful aftermath. The photographs are among the first to document the reality of war.

National Museum of Women in the Arts

1250 New York Avenue, N.W., Washington, DC 20005-3970 202-783-5000, 1-800-222-7270

Fabulous! Portraits by Michele Mattei

October 12, 2012–January 13, 2013

This show is a group of contemporary photographic portraits of women in and devoted to the arts.

High Fiber—Women to Watch 2012

November 2, 2012–January 6 2013

“On view November 2, 2012–January 6, 2013.

NMWA presents the third installment in our biennial exhibition series, Women to Watch, that features

emerging or underrepresented artists from the states and countries in which the museum has outreach committees. This exhibition highlights the centrality of fibers and fiber techniques to contemporary artistic practice.”

OTHER SHOWS and GALLERIES

Walters Gallery

600 North Charles Street
Baltimore MD
(410) 547-9000
Wednesday through Sunday, 10 A.M. — 5 P.M.

Revealing the African Presence in Renaissance Europe

Sunday, October 14, 2012–
Monday, January 21, 2013

Diadem and Dagger: Jewish Silversmiths of Yemen

October 27, 2012–January 21, 2013

Goldman Art Gallery

The Jewish Community Center of Greater Washington

6125 Montrose Road,
Rockville, MD 20852

301-881-0100

Monday, Wednesday,
Friday-9 a.m. – 5 p.m.

Tuesday, Thursday- 9 a.m. – 7 p.m. Sunday 10 a.m.-2 p.m

ARTsy Holiday Boutique and Craft Show

November 25–December 16

BlackRock Center for the Arts

12901 Town Commons Drive, Germantown, MD 20874 301.528.2260 (administrative offices)

Questions of Identity: Who What, Why We Are -Various Media

Wednesday, November 28, - Friday, December 21, 2012 , Artist Reception: Saturday, December 1, 5:30–7:30
This exhibition is made up of works from the part time faculty at Montgomery College.

Jessica Hopkins -Acrylics

Wednesday, December 05, - Thursday, January 31, 2013

The Mansion at Strathmore

10701 Rockville Pike North Bethesda MD 20852

For more information call (301) 581-5125. Free and Open to the Public

79th Annual Fine Art in Miniature

November 17, 2012 - December 29, 2012

Reception, Sunday, November 18, 2:00 - 4:00PM

Talk and Tour for Adults - December 8

Kids Sunday Workshop: Artist Trading Cards: Mini Masterpieces! - November 18 (for children 7 - 11)

Miniatures Workshop - December 8

Children’s Art Talk and Tour - December 8

Grayscale

November 17, 2012 - December 29, 2012

While most artists tend to think in colour, this show

explores a group who see things in shades of grey. reception

Tuesday, November 20, 2012, 7:00 - 9:00PM

Talk and Tour for Adults - December 8

Children’s Talk and Tour - December 8

Kids Sunday Workshop: Black and White Printmaking - December 9 (for kids age 7 - 11)

Adah Rose Gallery

3766 Howard Ave Kensington, Maryland 20895 (301) 922-0162 email- adahrosegallery@gmail.com

A Quiet Field of Surfaces” Jessica Drenk and Brie Husted

November 8 - December 16, 2012

Vernissage with the Artists: Saturday, November 10, 6:30-8:30 pm with live music by Blackberry Blonde

SEE PAGE EIGHTEEN

GALLERY NEWS AND NOTES

FROM PAGE SEVENTEEN

Hillyer Art Space Exhibitions

9 Hillyer Ct. NW, Washington, D.C. 20008
Mon 12-5, Tues-Fri 12-6, Sat 12-5, and by appointment
202-338-0680; gallery@artsandartists.org

The Artists' Gallery

4 East Church Street, Frederick, MD 21701
301-696-8187 www.the-artists-gallery.org
Fri-Sun 12-5

STICKS & STONES/INSIDE-OUTSIDE

Lisa Tarkett Reed and photographs by Marc Weinberg

November 2 - 25, 2012
Opening Reception on Saturday, November 3, from 5-9pm.

MAA Board for 2011-2012

President:

Cathy Hirsh
301-622-0546
hirshcathy@gmail.com

1st Vice President, Programs

Julie Smith
301-570-0416
spottedpony2@juno.com

2nd Vice President, Shows

Elizabeth Stecher
301-593-8305
estecher7@verizon.net

Secretary:

Marta Teigeiro
301-929-8399
lagarta63@hotmail.com

Treasurer:

Barrie Ripin
301-346-6867
bripin@verizon.net

e-Newsletter Editor:

Michael Shibley
301-807-6890
mfs-art@comcast.net

e-Newsletter Editor

(design):
Natalie Falk
nmfalk@comcast.net

e-Newsletter Reporter &

Children's Activities
Coordinator:
Judith Levine
301-869-6811
julevinern@aol.com

Activities Committee

Chairperson and Past
President:
Sara Becker
301-216-0861
thebeckers6400@verizon.net

Hospitality Committee

Chairperson:
Roxanne Ando
301-622-9541
penandpaintbrush@yahoo.com

Membership Committee

Chairperson:
Sandra Cepaitis
301-564-0331
slcep@msn.com

Publicity Committee

Chairperson:
Vicky Surles
vsurlesGraphics@comcast.net
240-604-5377

Facebook Page

Coordinator:
Victoria Squire
202-352-6664
victoria_squire@yahoo.com

Website Designer/

Manager and Past
President:
Laura-Leigh Palmer
240-354-5454
Laura.leigh@asapgraphics.com

SUPPORTING STAFF

Accounting Advisor:

Sue Meyer
301-384-4777
susanmeyercpa @verizon.net

Chairperson, "Paint the

Town" Kensington Labor
Day Art Show:
Debra Halprin
301-260-9701
halprinart@aol.com

Technical Website

Manager:
Heather Stobo
213-321-3919
hstobo@gmail.com