

MAA NEWS

MAY-JUNE 2017

IN THIS ISSUE

Mark Your Calendars for Our
“Paint the Town” Labor Day Art
Show!, 1

Friendship Heights Show Winners, 2
June Schwarcz, An American
Treasure, 3

New MAA Board Elected, 3

President’s Message, 4

Students Illustrate Bookmarks, 6

Upcoming Dates, 7

Announcements from
Our Members, 7

Gallery News And Notes, 8



Mark Your Calendars for Our “Paint the Town” Labor Day Art Show!

Our annual MAA 2017 PAINT THE TOWN, Kensington Labor Day Art Show will be held on Saturday, September 2 – Monday, September 4 this year, at the Kensington Town Hall Armory. Artists are invited to participate. Mark your calendars for our anticipated large art event. One work depicting the town of Kensington or a subject from this area is a requirement for participation. Our Labor Day show is very well attended and is quite successful.

Registration for the show will begin and end EARLIER this year, from July 3 to August 11, along with renewal of MAA membership.

If you will be entering in several categories, consider beginning work on your beautiful entries now. We encourage you to enter your latest and best work as always each year for the show.

The Labor Day Show flyer is available now on our MAA website (under Labor Day Show Flyer) to begin promoting our show. Our exhibition will include 2D visual and 3D sculptural art to be judged for several awards in the following categories: Kensington, Landscape, Still Life, Portrait (people and animals), Abstract, and 3D. One painting in the Kensington category is

continued on page 2

PAINT THE TOWN

CONTINUED FROM PAGE 1

chosen for “Best in Show” winner of the Bertha Clum award. Binwork will also be allowed. Over 500 works are exhibited annually in our show during the festival.

There will also be an Invitational for accomplished artists and instructors who have participated with MAA in some way. Their artwork will be judged separately for awards.

Our “Plein Air Event” during the show will be held on Saturday, September 2nd. Artists will “paint the town” in Kensington on this day, creating much excitement for the area and neighboring communities. You may even catch a glimpse of the press.

The Labor Day show Prospectus with full details will be available on www.montgomeryart.org, along with a Volunteer Sign-up form once registration begins on July 3rd.

We welcome and encourage all volunteers. If you would like to volunteer early please contact Pat Choquette – Labor Day Show Chairman, at Custom_Interiors@ChoquetteInteriorDesign.com or at 301-633-6173 (please leave a message). We will need help in several areas of the show.

Wishing everyone much excitement and success creating your art as we prepare for our Labor Day art show!—*Pat Choquette, MAA – Kensington Labor Day Show Chairman*



Friendship Heights Show Winners

Congratulations to each of the winners! Millie Scott, the judge for our Friendship Heights show, selected the following works for show awards:

Landscape

- 1st..... Stephen Hanks, “The Old Barn at Sunset”
- 2nd..... Terry Pellmar, “Flames of Autumn”
- 3rd Marcia Billig, “Reflection II”
- HM..... Max Leason, “Summer Pleasures”
- HM..... Peter Plant, “Tranquil Grace”

Still Life

- 1st..... Catherine Nickle, “Yellow Teapot”
- 2nd..... Ann Pielert, “Bunches of Cherries”
- 3rd Pat Coates, “Raspberries”
- HM..... Meredith Morris, “Cake Pop Gumdrops”
- HM..... Nar Steel, “Rose and Friends”

Portraits - People & Animals

- 1st..... Cecile Kirkpatrick, “Sold Out”
- 2nd..... Gloria Fischer, “Boy”

- 3rd Jennifer Rutherford, “Musetta”
- HM..... Paula Cleggett, “Farmer Brown, after Gordon Parks”
- HM..... Christina Haslinger, “Birdsong”

Abstract & 3-dimensional

- 1st..... Lisa Trevino, “Untitled”
- 2nd..... Gale Bell, “I See”
- 3rd Gloria Miotto, “Blending of Colors”
- HM..... Barry Perlis, “Ecstasy”

Miniatures

- 1st..... Elizabeth Stecher, “Life is Just a . . .”
- 2nd..... Diane Shipley, “Tranquility”
- 3rd James Vssari, “Late Morning Harvest”
- HM..... Dr. Arpitha Parthasarathy, “Transit Rest”

June Schwarcz, An American Treasure

June Schwarcz (1918-2015) was one of the most inventive art crafters in the world. She invented techniques and used materials nobody had ever thought to use or combine. Schwarcz studied industrial design at Pratt Institute, and from 1941 she created packages, greeting cards, textiles, and window displays. In 1954, after being introduced to enameling, she took a complete U-turn and moved into art crafting.

The result of that turn can currently be seen at the Renwick. And what a fantastic feast for the eyes it is! Each room brings new pleasures and eye-openers. Beginning with her earliest vases and bowls, the viewer experiences the joy Schwarcz felt. Her enamels glow as if transparent. The artist also began integrating Basse-taille, a technique in which the artist cuts or etches into the surface of copper. In the 1960's she began to expand her techniques and started experimenting with electroplating, which had never been used in art craft before. Unlike the traditional single plating, Schwarcz repeated the layers to gain new textures before adding enameling.

Her husband Leroy Schwarcz, a highly respected architect, drew up the plans for the Stanford Linear Accelerator Center. She was so taken with the beauty of the hand drawn plans that she made a series of wall pieces and bowls incorporating those designs. It is sad to think that these gorgeous works

would never have happened in today's world, where architectural plans are now computer-generated.

Between 1975 and 1983, Schwarcz produced twenty-six bowls incorporating champlevé and cloisonné techniques. Champlevé is a French word that means 'raised field.' Schwarcz cut into the copper, then filled in the resulting open spaces with electroplated silver, and then topped them with cloisonné. The results are bowls with exquisite flowing, undulating patterns which you can't take your eyes off. Schwarcz said "It's like gambling, I go through so many processes, and I don't know how something is going to come out. Sometimes something just works, sometimes it doesn't.... That

makes the process continually exciting."

Her inspirations were incredibly varied; Fra Angelico, Japanese wood block printing, architectural drawings, and nature are part of a huge inventory of sources she drew on. "Many ideas come from things I see in nature or other art. Often just a detail of color, pattern, or shape is enough to trigger an idea. I see them through the techniques I use which will transform them into something quite different from the original idea source."

Her show continues at the Renwick through August 27, 2017. You will find it leaves your mind and soul feeling fulfilled and yet wanting more.

—Judith Levine

MAA Officers 2017-2018: New MAA Board Elected

Bylaws Designated

President..... James Vissari
1st Vice-President (Programs)..... Alan Rich
2nd Vice-President (Shows)..... Elizabeth Stecher
Treasurer Barry Perlis
Secretary..... Terry Pellmar

Committees and Ad Hoc

Activities Chair..... Roxana Rojas
Hospitality Chair Marcia Bhorjee

Membership Chair..... Sandra Perez-Ramos
Newsletter Editor Lisa Mathias
Publicity Chair Vicky Surles
Community Outreach Chair Laura-Leigh Palmer
Social Media Chair Janet Fox
Special Shows Chair Virginia Montet
Kensington Show Chair Patricia Choquette
Web Content Manager..... Cathy Hirsh
e-News Editor & Children's Judith Levine
Activities Coordinator

President's Message

The election results are in for the upcoming year's Officers and Board members. I am pleased to report that the entire slate in the April issue of the Newsletter were unanimously elected by voting members. Congratulations to all those elected and my sincere thanks on behalf of us all for their willingness to serve. The incoming 2017-18 Board will take office and hold their first Board meeting on June 1, 2017.

James Vissari will change positions and take charge as your new President in June. James is already bubbling with great ideas and together we are collaborating to make the leadership transition seamless. Thank you James for agreeing to be President and for your assistance to me during my term.

Barry Perlis will become the Treasurer, while Janet Fox, current Treasurer, and Terry Pellmar, Associate Treasurer, will remain on the next Board in other capacities. MAA owes a deep debt of gratitude to both Janet and Terry for their service. They both dedicated many hours of intellectual energy and were always sources of sage advice for the President. Janet's service to MAA went levels above as she transformed the process of handling the association's finances, modernizing and computerizing our records, and documenting the duties and process to

make it easier her successors. I can not understate the complexity that the sales from the Kensington show and the gallery presented – Janet always had the sales transactions tabulated by end of day, and artist checks sent promptly, sales taxes and vendors paid, Federal tax forms processed, etc. Janet has also spearheaded our social media outlets and will continue to do this to get our word out.

James Vissari did a great job of arranging stellar speakers for this year's Wednesday evening meetings. Alan Rich, new to our Board and next Vice-President, Programs, will continue James's good work after our membership year begins in the fall. Roxana Rojas, also new to the Board as Activities Chair, will soon be busy arranging member programs for next year. Stay tuned. We thank Peter Wittke for his service this past year.

We welcome Pat Chouquette, who joined the Board in a recently created position—Kensington Show Chair. Creation of this Board position recognizes the enormous role that the Kensington Paint the Town show plays in our program. It takes great skill, dedication and leadership to pull off this show, which has been the key-stone show for MAA and a fixture in the Town of Kensington's Labor Day weekend celebration for three decades. Pat did a great job chairing

the hanging of the show last year and is already hitting the ground running on organizing the upcoming show. Pat deserves total cooperation from each and every one of us to pitch in with this effort.

No words can express my appreciation to Michael Shibley, who was President for the two years preceding me, and including MAA's memorable 60th anniversary. He chaired our Kensington shows for the past three years and brought each show off without a hitch. He initiated many improvements in the process; began the Invitational category of the show that drew in elite professional-level artists; and he documented the process for the benefit of his successors. A mark of Michael's skill and dedication is that he made it seem so effortless – but I know better! I personally owe Michael special appreciation for always being there for me with sage advice and always being willing to pitch in whenever I or MAA needed help or advice – Always! Thank you Michael!

Cathy Hirsh, who was President for the three years prior to Michael, is also well known to us all for her many contributions to MAA. She was co-founder of our Wheaton Mall Gallery over six years ago and its Manager until we lost our lease

continued on page 5

President's Message

continued from page 4

this past year. Her dedication and diligent effort made the Gallery possible – thank you Cathy!. We are fortunate that Cathy remains super-active and dedicated to MAA. As our Website Manager she continues her dedication to the success of MAA's operations. All members of MAA owe Cathy a huge collective hug and thanks for all she does. We also gratefully acknowledge Westfield Wheaton Mall for working with us to make our gallery possible all these years.

Elizabeth Stecher is another of our steady long-time members and volunteers. She has been the registrar for our shows for more years than I can remember, and has agreed to continue in this role – much to my relief. Elizabeth is also an 'always there and ready' stalwart of MAA – she even participated in the cleanout of our storage space in Wheaton Mall. Thank you Elizabeth.

Many of our new Board members have been serving for several years, quietly and effectively performing vital functions for our organization, as well as providing leadership and wisdom for our policy decisions. Sandra Perez-Ramos has been serving as our Membership Chair for many years; in addition to doing a meticulous job, Sandra has always been free with sage advice for me – thank you Sandra.

Vicky Surles, Publicity Chair, produces most of MAA's show flyers, award certificates and show programs, and is always there for Taste of Wheaton and Day of the Book events – thank you Vicky.

Virginia Montet, Special Shows Chair, has seamlessly arranged our very successful shows at Amici Miei, and other venues for many years – thank you Virginia.

Judith Levine, e-News Editor & Children's Activity Chair, has steadily contributed many articles to our Newsletter. She also scans the local media for information about interesting art exhibitions of interest to our members. Judith is ever ready to engage in MAA sponsored art outreach programs for area youth. Thank you Judith.

Laura-Leigh Palmer, Outreach Committee Chair, has demonstrated her dedication to MAA over many years and has also served as MAA President several years. She has involved us in many community outreach projects. Thank you Laura-Leigh.

For those of you who attend MAA social functions you must appreciate Marcia Bhorjee, our Hospitality Committee Chair. Marcia is another one of our quiet but effective volunteers at MAA functions. Marcia coordinates the provision

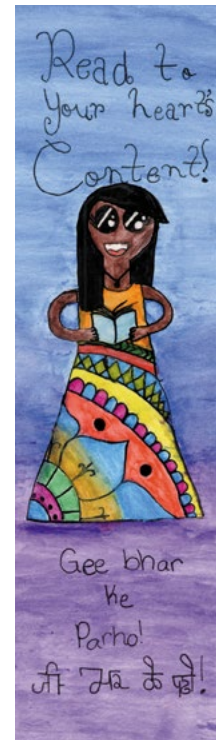
of food and beverage to our functions where we serve the attendees. This is nowhere more evident than at the big Reception for Paint the Town each year. Thank you Marcia.

Last, but certainly not least, I give my hearty thanks to Lisa Mathias, our Newsletter Editor. Lisa is responsible for producing our attractive Newsletter – a big job that previously had been split between two volunteers – Michael Shibley and Natalie Falk. In addition, Lisa has lent her digital skills to ably deal with excising hacker intrusion into our website. Thank you Lisa.

Last, but not least, I wish to thank Glen Kessler for generously providing his venue gratis in Artists and Makers 2 for our monthly meetings, for his support and for his many donations to MAA.

I have been privileged to work with all the talented and dedicated MAA members. Together we have accomplished a great deal for MAA and there are more exciting changes coming. So thank you for the opportunity to serve and make MAA even stronger as we move into our 63rd year.

Create On,
Barrie Ripin



Students Illustrate Bookmarks

Students at A. Mario Loiederman Middle School and Wheaton High School created original bookmarks that have been printed and distributed to all branches of Montgomery County Public Libraries.

The project was conceived and taught by Artivate teaching artist Leila Cabib, a professional cartoonist, illustrator, and animator. Cabib was awarded a Wheaton Cultural Project Grant from the Arts and Humanities Council of Montgomery County to partially fund the program. MAA,

under its outreach effort, also contributed funds and expertise to this project.

Each student chose a quotation about books or reading to illustrate. Several students came up with their own quotations. Fourteen of the 24 bookmarks are bilingual: in Spanish and English, as well as Chinese, Hebrew, Hindi, Tagalog, and Nepali. The students drew pencil sketches, traced them onto bristol board, and completed their drawings with pen and ink and watercolor pencils. Several professional local artists visited the

workshops to show their artwork to the students and discuss their methods and experiences.

The students' original artwork will be on display at the Wheaton Interim Library, 2400 Arcola Avenue, from May 1 through June 30. A reception was held at the library, which is currently located in the Wheaton Volunteer Rescue Squad building, on Thursday, May 18.

An audio slideshow about the project may be viewed at <https://youtu.be/Esv3tjL6rBI>



Giclée Printing & Photography

Create Fine Art Reproductions of Your Artwork on Watercolor Paper or Canvas

A Work of Art by Debra Halprin

.11 cents per sq. inch on paper

.14 cents per sq. inch on canvas

\$35 Photography Fee - Includes Proofs and Color Enhancements

[For All Your Giclée Printing Needs](#)

www.Halprinart.com

301-260-9701

Announcements from Our Members

Frames for Sale

“After painting for so many years and stockpiling frames suitable for oils and acrylics, I need to clear out my huge collection. They include most standard sizes from 8x10 up to 24x48. I would like to sell them at very low prices, \$5 and up (any offers very welcome!).

I live not far from Montgomery Mall, and welcome artists to come and see them — they can call me at 301-299-6176.” —*Nancy Heindl*

Members’ Shows

Jennifer Kahn Barlow’s work was recently on display at the Glenview Mansion in Rockville along with works by Sara Leibman, Barbara Bell, and Coriolana Simon.

Julie Steinberg displayed her art at the Washington Folk Festival at Glen Echo National Park on June 3 and 4.

In May, Nar Steel judged and juried the national exhibition “small works/BIG IMPACT” for the Gallery Underground in Arlington, VA.

James Vissari will exhibit landscapes and botanicals in a solo show at Brookside Gardens in September.



Painting by James Vissari

REMEMBER THESE:

UPCOMING dates

Last Day of the Amici Miei Restaurant Show: **June 25, 3:00 PM**

Pick-up Artwork at End of Friendship Heights Show: **June 25, 10:00-11:00 AM**

Registration Opens for the Labor Day Show: **July 3**

Last Day to Register for the Labor Day Show: **August 11**

Labor Day Show Open to the Public: **Saturday, September 2-Monday, September 4**

Newsletter Content Deadline (Send your announcement to info@lisamathias.com): **August 20**

Gallery News And Notes

This part of the newsletter is designed to provide you with art news and information about interesting shows at the many local art galleries. If you are aware of an event, news or an exhibit, large or small, that you think would be of interest, please send an email to JULevineRN@aol.com. If going to one of the galleries you have not been to we urge that you contact the gallery or its website to ask about directions and transportation. Parking near the galleries in DC can be difficult, but many of them are accessible via Metro. Unless otherwise noted, admission is free.

Museum Shows

The Phillips Collection

1600 21st Street NW, Washington, DC 20009; 202-387-2151; \$12 for adults, \$10 for students and visitors 62 and over, free for visitors 18 and under and members; Closed Mondays

Markus Lüpertz: Threads of History

May 27, 2017-September 3, 2017

Women of Influence: Elmira Bier, Minnie Byers, and Marjorie Phillips

April 1, 2016-July 30, 2017

George Condo: The Way I Think

March 11, 2017-June 25, 2017

This is an artist who has challenged the idea that drawings are incomplete, lesser works than paintings. His work is a melding of cubism and abstraction. The viewer gets to

exercise his or her imagination to determine what is being seen.

Intersections:

Intersections, a series of projects, explores the way two sometimes radically different objects relate and join together. Each project explores new traditions, modern and contemporary art practices, and museum spaces and artistic interventions. It branches into both traditional and non-traditional exhibition spaces with some surprising and intriguing results.

The National Gallery of Art

Fourth Street and Constitution Avenue NW, Washington, DC 20565; General Information: (202) 737-4215

In the Library: Companion Pieces (East Wing)

April 24-August 25, 2017

Civic Pride: Group Portraits from Amsterdam (West Wing)

March 10, 2012-August 31, 2017

Theaster Gates

March 5, 2017-September 4, 2017

Theaster Gates (b. 1973) is an American artist who draws influences from African sculpture and from unexpected craft sources. His creations are novel and breath-taking.

Frédéric Bazille and the Birth of Impressionism

April 9, 2017-July 9, 2017

Frédéric Bazille (1841-1870) is almost unknown today, but his contribution to the birth



The Ramparts at Aigues-Mortes, by Frédéric Bazille. Image courtesy of the National Gallery of Art, Washington

of Impressionism is huge.

East of the Mississippi: Nineteenth-Century American Landscape Photography (West Wing)

March 12, 2017-July 16, 2017

The Woodner Collections: Master Drawings from Seven Centuries

March 12, 2017-July 16, 2017

Hirshhorn Museum and Sculpture Garden

Independence Avenue at Seventh Street SW, Washington, DC; 202-633-1000 or 202-633-5285 (TTY)

This gallery focuses on contemporary artists.

Linn Meyers: Our View from Here

June 2, 2017-August 13, 2017

Nicholas Party: Sunrise, Sunset

June 7, 2017-October 1, 2017

"Sunrises and sunsets are among the few moments in the day when we are reminded

that the universe is vast and its measure of time infinite. This perspective, when viewed within a landscape, allows viewers a retreat from the comparatively trivial motions of daily life. By creating a new monumental mural comprised of such landscapes—some borrowed from the genre's historical repertoire, others culled from his imagination—New York-based Swiss artist Nicolas Party encourages viewers to step back from these frenzied times and occupy a far more expansive position. Covering the entire Third Level inner-circle gallery, this site-specific commission takes advantage of the Hirshhorn's distinctive circular architecture, a form uniquely suited for such immersive and surreal environments." (Hirshhorn catalogue)

Masterworks From the Hirshhorn Collection

June 9, 2016-August 6th, 2017

Hirshhorn donated the nearly 6,000 piece collection of works by modern masters that comprise the gallery's permanent collection. Rodin, Picasso, and de Kooning are just two of the many artists included, many of whom Hirshhorn believed in passionately and supported long before they were known to the public.

The Sackler Gallery/The Freer Gallery

1050 Independence Avenue SW, Washington, DC; 202-633-1000

The joint galleries house one of the world's great collections of Asian arts. The Freer

CONTINUED ON PAGE 9

GALLERY NEWS AND NOTES

CONTINUED FROM PAGE 8

houses mostly permanent collections (it may not sell or lend any of its collection), and the Sackler has permanent and short term exhibits.

The Freer remains closed for renovation. The Sackler Gallery will also close for renovation on July 10, 2017. Both spaces will reopen on October 14, 2017.

Perspectives: Michael Joo (Sackler)
July 2, 2016-July 9, 2017

Joo is an American artist who draws on his Korean heritage. The work in this show is based on red cranes. As the amount of light flooding the gallery changes with the seasons the vision will shift.

Body of Devotion: The Cosmic Buddha in 3D

January 30, 2016-July 9, 2017

The Glazed Elephant

April 15, 2017-ongoing

National Museum of the American Indian

Fourth Street & Independence Avenue SW, Washington, DC 20560; 202-633-1000

The Great Inka Road: Engineering an Empire

June 26, 2015-June 1, 2018

"Construction of the Inka Road stands as one of the monumental engineering achievements in history. A network more than 20,000 miles long, crossing mountains and tropical lowlands, rivers and deserts, the

Great Inka Road linked Cusco, the administrative capital and spiritual center of the Inka world, to the farthest reaches of its empire. The road continues to serve contemporary Andean communities across Colombia, Ecuador, Peru, Bolivia, Argentina, and Chile as a sacred space and symbol of cultural continuity." — NMAI catalog

National Museum of African Art

950 Independence Avenue SW, Washington, DC; 202-633-1000 (voice/tape)

National Museum of African American History and Culture

Constitution Avenue NW, Washington, DC 20004; 202-633-4751

Visual Art and the American Experience

The initial exhibit is also a permanent exhibit.

Renwick Gallery

1661 Pennsylvania Avenue NW, Washington, DC; 202-633-7970

The Renwick's main focus is on the decorative arts.

June Schwarcz: Invention and Variation

March 10, 2017-August 27, 2017

Schwarcz, who received the James Renwick Alliance Masters of the Medium Award in 2009, began as a commercial artist after receiving a degree from Pratt Institute, where she studied industrial design. Introduced to enameling in 1954, she soon began to shift

into art craft, becoming a leader and innovator in her field.

Voukos: The Breakthrough Years

April 7, 2017-August 20, 2017

Connections: Contemporary Craft at the Renwick Gallery

July 12, 2016-ongoing

Parallax Gap

July 1, 2017-February 11, 2018

The Renwick Gallery's Bettie Rubenstein Grand Salon will become a gigantic puzzle. The interplay between trompe l'oeil effects and multiple vanishing points will make the viewer see architecture in a whole new light.

National Portrait Gallery/ Smithsonian American Art Museum

8th Street at F Street NW, Washington, DC; 202-633-1000 (voice/tape)

The National Portrait Gallery (NPG) and the Smithsonian American Art Museum (SAAM) both contain many permanent exhibits that easily allow for many visits. These connected galleries, part of the Smithsonian, form a national treasure of American paintings and sculpture. The buildings include exquisite restored stained glass windows in ceilings and walls, and beautiful floor and wall tiling.

The Face of Battle: Americans at War, 9/11 to Now

April 7, 2017-January 28, 2018

America's Presidents

March 24, 2017-September 4, 2017

Donald Sultan: The Disaster Paintings

May 26, 2017-September 4, 2017

Sultan used newspapers and other media to gather the information, then turned each event into his view. He uses both representationalism and abstraction to create his unique views.

National Museum of Women in the Arts

1250 New York Avenue NW, Washington, DC 20005-3970; 202-783-5000, 1-800-222-7270

Chromatic Scale: Prints by Polly Apfelbaum

March 10, 2017-July 2, 2017

Pure colors explode in Apfelbaum's work. It doesn't matter whether she has applied her paints to ceramic, paper, wood or canvas. Her abstract patterns fascinate and keep your eyes moving all the time. Go experience her treats.

Revival

June 23, 2017-September 10, 2017

Walters Art Museum

600 North Charles Street, Baltimore MD; 410-547-9000; Wednesday through Sunday, 10:00 AM-5:00 PM

Training the Eye: 19th-Century Drawing

May 14, 2017-August 13, 2017

Sondheim Artscape Prize 2017 Finalists Exhibition

June 17, 2017-August 13, 2017

CONTINUED ON PAGE 10

GALLERY NEWS AND NOTES

CONTINUED FROM PAGE 9

Gallery Shows

Goldman Art Gallery, The Jewish Community Center of Greater Washington

6125 Montrose Road, Rockville, MD 20852; 301-881-0100; Sunday 1:00-5:00 PM, Monday, Wednesday, and Thursday: 4:00-7:30 PM

BlackRock Center for the Arts

12901 Town Commons Drive, Germantown, Maryland 20874; info@blackrockcenter.org; 301-528-2260

2017 Mid-Atlantic Regional Watercolor Exhibition (Kay Gallery)

June 17, 2017-July 15, 2017; Artists' Reception: June 25, 2017, 2:00 PM-4:00 PM

Mike McConnell: Elsewhere (Kay Gallery)

April 29, 2017-June 10, 2017

Chiou: Mirage (Terrace Gallery)

April 29, 2017-June 10, 2017; Receptions: April 29, 2017, 2:00 PM-4:00 PM; Artist Talk and Gallery Tour: May 20, 2017, 2:00 PM-3:00 PM

David R. Daniels: Beyond Limits (Terrace Gallery)

June 17, 2017-July 14, 2017; Reception: June 25, 2017, 2:00 PM-4:00 PM; Community Art Day—Watercolor: Saturday, June 17, 2017, 2:00 PM-3:00 PM

The Mansion at Strathmore

10701 Rockville Pike, North Bethesda, MD 20852; information 301-581-5125; Monday, Tuesday, Thursday, Friday 10:00 AM-4:00 PM; Wednesday 10:00 AM-9:00 PM; Saturday 10:00 AM-3:00 PM; Closed Monday; Free

25th Annual Colored Pencil Society of America International Exhibition

June 10, 2017-August 6, 2017

Blush: Emily Hoxworth & Rose Jaffe

June 10, 2017-August 6, 2017

Adah Rose Gallery

3766 Howard Avenue, Kensington, Maryland 20895; 301-922-0162; adahrosegallery@gmail.com; Tuesday 1:00-6:00 PM, Thursday-Sunday Noon-6:00 PM, and by appointment

TAG of Frederick (formerly The Artists' Gallery of Frederick)

216 North Market Street, Frederick, MD 21701; 301-696-8187; www.theartistsgalleryfrederick.com; Friday and Saturday Noon to 8:00 PM, Sunday Noon-5:00 PM, or by appointment

Mark Rothkopf

SunSational-TAG members

June 2, 2017-June 25, 2017; Reception: June 3, 2017, 5:00 PM-9:00 PM

VisArts at Rockville

155 Gibbs Street, Rockville, MD 20850; 301-315-8200

José Ruiz, 2017 VisArts Mentoring Curator (Kaplan Gallery)

May 5, 2017-June 11, 2017

Lewis Colburn (Kaplan Gallery)

June 16, 2017-July 16, 2017; Reception: June 16, 2017, 7:00 PM-9:00 PM

Cynthia Brinich-Langlois: Oryza (Common Ground Gallery)

June 2, 2017-July 2, 2017; Reception: June 16, 2017, 7:00 PM-9:00 PM

Maria Lux (Gibbs Street gallery)

June 9, 2017-July 9, 2017; Reception: June 16, 2017, 7:00 PM-9:00 PM; Workshop with the artist: June 10, 2017, 10:00 AM-3:00 PM

VisArts Studio Artist Show (Concourse Gallery)

May 19, 2017-June 16, 2017; Reception: June 16, 2017

Iona House

4125 Albemarle Street NW, Washington, DC 20016; 202-895-9423; www.iona.org; Monday-Friday, 9:00 AM-5:00 PM

Lauren Kingsland and Liz Lescault

Gallery Underground

2001 Jefferson Davis Highway, Arlington, VA 22202; 571-483-0652; galleryunderground.org; Monday-Friday 10:00 AM-6:00 PM, Saturday 10:00 AM-2:00 PM

Lieve DeWulf: Ceramics (Focus Gallery)

Spring into Summer" Members' Show (Main Gallery)

June 1, 2017-June 30, 2017; Reception: June



Image: David R. Daniels, "Koi 360," watercolor, 59 x 31 inches.

2, 2017, 5:00 PM-8:00 PM

Kentlands Mansion Gallery

320 Kent Square Road, Gaithersburg, MD; Monday-Friday 9:00 AM-4:00 PM, Saturday 1:30 PM-5:30 PM (Due to event scheduling, please call the Mansion at 301-258-6425 prior to your visit to confirm availability of the gallery.)

Gaithersburg Fine Arts Association Annual Juried Exhibition

April 21, 2017-July 7, 2017

CONTINUED ON PAGE 11

GALLERY NEWS AND NOTES

CONTINUED FROM PAGE 10

Arts Barn Gallery

311 Kent Square Road, Gaithersburg, MD;
Monday-Friday 10:00 AM-5:00 PM, Saturday
1:30 PM-5:30 PM

Modern Surrealists

June 1, 2017-July 4, 2017

Bohrer Park Gallery

506 South Frederick Avenue, Gaithersburg,
MD; Monday-Saturday 8:00 AM-8:00 PM,
Sunday 8:00 AM-5:00 PM

22nd Annual Chinese Calligraphy and Brush Painting Exhibit

June 1, 2017-June 25, 2017

Brookside Visitors Center Gallery

1800 Glenallan Avenue, Silver Spring, MD
20902; Open daily 9:00 AM-5:00 PM; Closed
selected holidays

The Brookside School

June 10, 2017-July 22, 2017

Oasis Gallery

Montgomery Mall at the rear of Macy's
Home Store on the second level

Gallery 209

Artists & Makers Studios 2, 12276 Wilkins
Avenue, Rockville, MD 20852

MAA artists Cathy Hirsh, Geri Olson, Roxana
Rojas-Luzon, Ann Schaefer, Marcia Bhorjee,
Natalie Falk, Janet Fox, Gordon Lyon, Vicky
Surlles, Jeanne Powell, and Sandra Perez-
Ramos have joined together to open this stu-
dio. Please go check it out and support our
fellow members in this exciting new venture.

MAA Board for 2017-2018

President

James Vissari

301-651-7899
Maapresjv@gmail.com

1st Vice President, Programs

Alan Rich

alan@alanrichartist.com

2nd Vice President, Shows

Elizabeth Stecher

301-593-8305
estecher7@verizon.net

Secretary

Terry Pellmar

301-622-0826
terry.pellmar@verizon.net

Treasurer

Barry Perlis

barryperlis@gmail.com

e-Newsletter Editor and Website Administrator

Lisa Mathias

301-588-4050
info@lisamathias.com

e-Newsletter Reporter and Children's Activities Coordinator

Judith Levine

301-869-6811
julevinern@aol.com

Activities Committee Chair

Roxana Rojas

periodistaperu@gmail.com

Hospitality Committee Chair

Marcia Bhorjee

301-493-4665
marcia@bhorjee.com

Membership Committee Chair

Sandra Perez-Ramos

301-625-4889
sandraperezramos@hotmail.com

Publicity Committee Chair

Vicky Surlles

240-604-5377
vsurllesGraphics@comcast.net

Social Media Chair

Janet Fox

301-448-2215
jfoxdreamart@gmail.com

Special Shows Committee Chair

Virginie Montet

202-285-2329
vmontet2002@yahoo.com

Kensington Show Committee Chair

Patricia Choquette

301-633-6173
custom_interiors@choquettein-
terioridesign.com

Community Outreach Committee Chair,

Past President

Laura-Leigh Palmer

240-354-5454
Laura.leigh@asapgraphics.com

Supporting Staff

Accounting Advisor

Sue Meyer

301-384-4777
susanmeyercpa@verizon.net

Web Content Manager,

Past President

Cathy Hirsh

301-622-0546
hirshcathy@gmail.com