

## in this issue ...

Carol Bouville, 1

MAA Meeting, 3

New Members, 3

President's Message, 4

Welcome New Members, 5

Another Tool for the Artist, 6

MAA Show Online Registration, 7

Member Events & Recognitions, 8

Art News, 10

Upcoming Dates, 11

Art News & Gallery Notes, 13

## Featured Artist: Carol Bouville

*Interview by Judith Levine*

**C**arol Bouville, a multi-faceted artist and art crafter, is the MAA Gallery's

Featured Artist for the month of May. Her home is a warm place that is filled with her creations. Some of the craft pieces prominently displayed include an exquisite three-story Victorian doll house she built and some of her dolls. They are displayed in her studio space. For many years, Bouville has used the space as her own place of creating. She is now working out of a studio she shares with her friend and fellow MAA member Julie Smith at the new Washington ArtWorks in Rockville.

Born and raised in Northern Virginia, she graduated from Wakefield High School in 1963. She attended Northwestern University in Chicago for two years, but then met her husband Andre and went with him back to his native France, living in Toulouse and Paris. After her first job—



*Artist Carol Bouville*



*An Early Spring, by Carol Bouville*

teaching English for a number of years in France, Bouville began her studies in American Literature at the Sorbonne. She would go on to earn her bachelor's and master's degrees at the prestigious institution. Eventually, she and her husband returned to the United States-New York City - where she would work as a marketer in a graphic arts business until 1991. She said she has always dabbled a little bit in art and has always loved going to museums and galleries here and in Europe. That year, after losing her job, Bouville, acting, "...on an impulse...bought one paint brush, some student-grade watercolors, and just started painting. It became a passion." Thus began her journey to make paintings for "the rest of my life". The family moved to Montgomery County in 1992.

SEE PAGE TWO

# Bouville

FROM PAGE ONE

Bouville continues her artistic journey which now includes taking classes with teachers such as Phil Metzger, Joe Mayer, Dave Daniels, Firouzeh Sadeghi, and at Montgomery College. Though not currently taking formal classes, the artist does frequently attend workshops. "In the fall of 2002, I was ac-



*Wildflowers, by Carol Bouville*

cepted into Potomac Valley Watercolorists and the Washington Water Color Association. In March, 2003, I was juried into the Baltimore Watercolor Society as a signature member. I have also been teaching watercolor classes in my home studio for the past ten years." Bouville loves to teach and has been giving watercolor and collage workshops in area art organizations. She teaches collage techniques from time to time at Plaza Artist Supplies. Additionally, she is part of a group called the Pâté Painters (Debra Halprin, Julie Smith, Barrie Ripin and Michael Shibley are also members of this group) and actively participates in their group shows, including at the Yellow Barn, the Arts Barn, Brookside Gardens and Glenview Mansion among others.

Bouville cited Joe Mayer's watercolors as a big influence on her art, so I took a brief look at some of his work. I can see what she

saw but I personally felt that she has taken his impressionistic style and grown it into something very much her own vision. Both use a lot of rich earth tones and blues but Bouville's shapes are softer and a bit less defined. Her shapes in her abstract work are soft and flowing, both distinct and melting at the same time, in part because of her wet on wet approach. Interestingly, the edges in her representational work are much sharper. In both styles she forces your eyes to keep moving, to keep discovering new things within each work.

I looked at a painting of a market she had visited in Ghana and felt a connection with the women in the market place. The exquisite African fabrics



*Toward The Light, by Carol Bouville*

on the people take the viewer on a vibrant journey through the crowded space. "My subject matter tends to focus on landscapes, street scenes, and still life. I also love experimenting with collage and mixed media," she said. Occasionally, her work veers into portraiture. With her portraits, Bouville has a wonderful knack for introducing you to her subject. I saw two pictures of African women, both seen from behind. Bouville explained that her subjects

did not want to have their faces photographed. It did not matter. The way they held their arms, the tilt of the head, the curve of the spine, spoke volumes. Even the careful and painstaking depiction of the intricate pattern of the fabrics let you understand who they were. In her new studio, Bouville let me see a work in progress including a portrait of her granddaughter. The child's introspective expression was gorgeous. Her skin glowed. Still, this was a mature portrait, not a mushy, overly sweet painting. Bouville does not fall prey to her role as grandparent as she speaks of the little girl. Instead it is a portrait of a beautifully nuanced human being that is growing on the paper.

Looking to the future, Carol will likely still be teaching and continuing to travel, especially to her beloved France where her son lives and to California where her daughter lives. Though she

SEE PAGE THREE



## Bouville

FROM PAGE TWO



*African Fantasy, by Carol Bouville*

admitted that when she lived in France she missed the American sense of humor, she loves what she sees as an innate sense of creativity among the French.

For now, creating paintings continues without a question. "Exactly the same thing, but better...pushing myself...I feel like I am always learning from my

students. I just like the contact. It pushes you to keep an open mind. I hope circumstances allow me to paint until I die...I feel so fortunate that I can do this." The members of MAA and the public will get a chance to see Carol's work during the month of May while she is the featured

artist at the MAA Gallery. Her work will be on display beginning Tuesday, April 29 and running through Monday, May 26. Carol will be hosting an opening reception at the Gallery on Sunday, May 4 from 1-5 PM. If you are looking for a nice event on a Sunday afternoon, drop by and speak with Carol about her art.

# MAA MEETING may 14, 2014

Our next regular MAA monthly meeting will be held on Wednesday, May 14 from 6:30 – 8:30 PM. Our guest presenter will be MAA member **Terry Pellmar**, a digital imaging artist, who will discuss and demonstrate her approach to producing her art. Terry is a regular participant in the MAA Gallery shows and her work always draws a lot of interest. Don't miss this informative program.

The meeting will be held at Plaza Art located at 1776 E. Jefferson Street on the back side of the Federal Plaza Shopping Center. There is plenty of parking. The social time will begin at 6:30 with the program beginning at 7 PM. Come and chat with your fellow members and then enjoy the presentation.

The deadline for submissions for the June newsletter is May 20.

## MAA Art



*Calcutta Whimsey, by Cathy Hirsh*

If you are interested in having your work included in *MAA News*, please send one or two high-resolution (300 dpi) jpegs to [nmfalk@comcast.net](mailto:nmfalk@comcast.net). Please label your submissions with the title and your name.



*Untitled, by Sandy Cepaitis*

# President's Message

It's May and spring is here! Well, almost here? Or, maybe it will come soon? What a strange spring it has been. I have seen all of the notices flying around about people wanting to get outside and paint after being inside all winter. But



we all know, with Washington weather, we will soon be complaining about how hot it is!

On the brighter side, one thing that does not change with the weather is the activities of the MAA. We are in full bloom with our

springtime activities. The Friendship Heights Show is coming up very soon. Look for the notices of the registration form that will be located on our website. We are honored to have Christine Lashley as our show judge. Christine is an instructor at the Yellow Barn where she teaches classes and workshops in both watercolor and oil painting both plein air and studio. The Friendship Heights Show is one of our popular annual events. Go to the "FH Form" on the MAA website to print the registration form. It is available now. Don't miss this annual opportunity.

Of course, we have our continuing MAA Gallery Show. This month we are featuring artist member **Carol Bouville**. Her interview is included in this newsletter. Carol has been exploring some

new techniques to add to her arsenal of watercolor skills. Her show will begin on Tuesday, April 29 and run through May 26. Carol will be hosting a reception in the Gallery on Sunday, May 4 from 1-5 PM. Please come by and talk to Carol about her new work. Happily, we have committed "Featured Artists" for the Gallery through the September show. Names for October to December will be drawn at an upcoming MAA event. If you are interested, get your name into the canister at the Gallery and be ready for the next drawing.

We also have the WSSC show registration deadline coming up on May 15. The show hanging is Monday, June 2. The show will run until June 30. There is room for approximately 40 pieces so don't delay in registering. It's first come,

first served.

The interim switch on our continuing show as Amici Miei will take place on May 18. That show will run until June 29.

In other news, it will be of interest to members that MAA has made it's annual scholarship fund contribution to Montgomery College. The College will decide which of their students is most deserving. That individual will be recognized at an appropriate MAA event in the months ahead. Also, as I mentioned before, the Board approved an additional scholarship to be granted to a local high school art program. We are still working on identifying which program that will be. I will keep you informed as we move forward.

And, of course, don't forget the upcoming Kensington

Labor Day Paint the Town Event. It's never too early to start working on your mandatory Kensington Painting. As I noted before, our judge will be Glen Kessler who operates a studio at Washington ArtWorks and teaches at the Yellow Barn. We are very pleased to have Glen as our judge.

In the April issue, I reported that we would continue our MAA 60th Birthday Celebration. I am very pleased to announce that our new MAA t-shirts and artist aprons displaying our colorful MAA 60th Anniversary logo are now available for sale. Thanks go to **Vicky Surles** for working with the vendor to secure a good price and a quality product. The shirts and aprons will be for sale at MAA events and at the Gallery. The shirts and aprons are on sale at the

SEE PAGE FIVE

## President's Message

### FROM PAGE FOUR

MAA Gallery. I hope that you will take advantage of this opportunity to purchase a remembrance of 60 years of service. I have already reserved a shirt and an apron for myself. These items also make terrific gifts for your artist friends. Check it out!

In closing, you will note in the new member section that we continue to grow our association membership. The value of what MAA offers to local artists in terms of showing their artwork continues to draw new people into our MAA family. Please welcome all

of our new members.

That's it for this month. Take care and keep painting.

*MAA—Now celebrating 60 Years of service to local artists.*

Michael Shibley



MAA 60 Year Anniversary t-shirts and aprons are now on sale.

## Welcome to New Members

Since the last newsletter, we have added six new members to our MAA family. Please welcome the following individuals:

**Nadia Azumi**  
**Suzi Gifford**

**Fadimata Halatine**  
**Rick Kowalewski**

**Heidi Sheppard**  
**Jennifer Warmuth**

With addition of these new members, we now have 232 active members of MAA. We are still working on renewing members whose membership lapsed last fall. Pushing our membership growth is an important effort as we continue to reach out to the artist community.

Please help your local art association continue to grow and prosper. As we have noted before, the opportunity of the MAA Gallery clearly continues to draw new members into our group. Membership in MAA is an easy case to make. So talk to your artist friends about the benefits of being part of a dynamic art association. Recruit a new member today!

**MAA— Celebrating 60 years of service in 2014!**

We apologize to any members whose names are not listed. We will catch up with you next month.

## Artist Quote of the Month

*"I perhaps owe having become a painter to flowers."*

—Claude Monet

*Water Lilies, by Claude Monet*





# Another Tool for the Artist

I learned something this week that I thought would be of interest to all of our artists, no matter what medium they may use. As artists, you certainly know the feeling of being on a trip and you see something that strikes you as a possible subject for a painting. So what do you do instinctively? You grab your camera and try to get the best photo possible. Or,

a pencil sketch is always a possibility, too, if you have the materials with you.

There is another way that can enhance your knowledge of the subject and complement your photograph and/or pencil sketch. It is a fairly simple new tool available from the online art supply sites like Jerry's Art-A-Rama, Art Supply Warehouse, and Dick Blick, call Aquaflow. It's a water pen with a soft nib that dispenses water as you squeeze

the water-filled cartridge. It's very light and perfect for a quick sketch sitting in a café or restaurant or as you walk around at your location.

I prefer to do pencil sketches first and then do a quick addition of color to give the sketch some life. I have included a couple of my own sketches that were produced this way using the Aquaflow pen. It's really easy to use and you don't have to be a watercolor artist to use one. You just need a little box of basic colors and then just squeeze to get the water. It's as easy as that.

So if you are looking for an exciting and easy to use way of recording what you see put a color box and one the pens in your kit bag the next time you travel. They are available for about \$11 retail but I got mine for \$5.19 each during one of the online sales.

**Coincidentally, this month's Watercolor Artist magazine, has a very good article by Ian Stewart entitled, "From Sketchbook to Studio: The Real Painting Journey Starts with a Sketch". It explains his use of sketches to develop finished paintings later. It's worth the time to read. Editor.**



# MAA Show Online Registration



We register pieces for MAA shows using the online show entry software available through the MAA website, [www.montgomeryart.org](http://www.montgomeryart.org). Registrations should be completed in the online entry software by the registration date deadline shown in the entry instructions.

As a brief reminder, we have reprinted the steps for registering online. To complete your online show registration, simply follow the instructions step-by-step below:

1. Go to the MAA Website Home Page at [www.montgomeryart.org](http://www.montgomeryart.org). On the right side of the page, you will see a link to register for available MAA shows. Click "Enroll Online".
2. The link will take you to a "login" page for the show registration software.

To do online registration, you need to create an online show entry account. (Note: this is a 1-time setup for entering shows. The email and password you set

up will be what you will use to enter your show information going forward. You will not need to set up a new account again to enter shows online.)

The show entry account is not the same as the membership account. If you have not entered shows online before, you will need to set up a show account. For simplicity, we suggest that you use the same email and password for both the online show account and the membership account.

Click the login link, complete your login, and you will be directed to the page at step 3. (Note: If you have created an account before, but for some reason the password does not seem to work, simply click the link next to the "Forgot

your password? message. You will be sent a new password, which you can use to login to your account. The sent password is usually very complicated—when you get into your account, simply click "edit password" and change the password to something you will remember.)

3. Once "logged in," you will see a list of shows that have been defined for registration. Find the show you are interested in and click "Apply Now" to see the registration instructions for that show. Make sure you read the entry instructions and if you are eligible and still want to enter the show, begin adding your piece information. To register a piece, click "Add Piece." You are then asked to complete

the following info: title, material (media), and price. After checking the information you've entered, simply hit the Upload button at the bottom, and the system will register the piece. (You do not have to submit an image of your piece even though there is a space for you to do so if you want.)

**Note:** As you're entering the information for your pieces, you are completing the specifics that will be shown on the label. We want MAA labels to have a "standard look." Therefore, please make sure to use proper capitalization and spelling. We capitalize the first letter of the first word of the title and the media, and also of significant follow-on words in the title or media. We also place a

SEE PAGE EIGHT

## Gallery Registration

FROM PAGE SEVEN

\$ in front of the price and do not enter cents.

If multiple pieces are allowed, to register additional pieces, simply repeat the steps in the paragraph above. You can enter the information for all your pieces in a single session or you can logout and continue your registration at a later time by logging into your account through the Home page link.

Once you have entered the information for your pieces, and before you “submit” your entry, you can edit your information, delete a piece, or even change the entire entry up to the final registration date. Once you submit your show entry, however, you cannot

edit the information for your pieces (title, material (media), price) or delete or add a piece to your show entry. If this becomes necessary, you will need to contact the show registrar.

Once you have entered the information for your piece(s) and you have double-checked the information for accuracy, correct spelling, etc., and if there are no entry fees, simply click submit on the right. And you’re done!

If there are entry fees, go through the online credit/debit card payment process using the secure paypal payment procedures. If you prefer to use a check, simply bring your

check to show drop-off or mail to the Show Registrar at the address shown. Once done, online or not, logout.

**Note:** your entry will only be marked “submitted” if you have paid the entry fee online, but don’t worry if you are paying by mail or in person. If your information is in by the due date, then your entry is submitted for the show.

4. After submission and logout, if you want to see the information for each of the pieces, just login to your account—the information will be online and is available for you to review at any time.



*Rolando, by Marianne DiBrino*

## Member Events and Recognitions

### Woman’s Club of Chevy Chase Art Show Winners

The 39th Annual Woman’s Club of Chevy Chase Community Art Show and Sale was held from Friday, March 28 through Sunday, March 30. Many of our MAA members look forward to this enormous show that is held at the Woman’s Club facility adjacent to the Chevy Chase Library Branch on Wisconsin

Avenue. We are pleased to let you know that several of those members were selected as award winners. Congratulations to **Marianne DiBrino** who won an honorable mention in the “Portrait” category. Also to **Vicky Surles**, who won second place in drawing/prints and an honorable mention. To **Michael Shibley** who was awarded First Place in the Miniatures cat-

egory. And to **Lisa Mathis** for an Honorable Mention in the Portrait category. If you have never entered this show, it’s a good one and they typically have a lot of sales. So get on the list for next year and take advantage of another chance to show your work to the public.

SEE PAGE NINE



# Member Events

FROM PAGE EIGHT

## Art Display At Kensington Park Library

Several member artists of MAA are pleased to be offering their work for display and sale at the Kensington

Park Library. The exhibition runs through Saturday, May 3, 2014. The MAA artists in this show are:

**Carolyn Avery**/acrylic;  
**Carol Knott**/watercolor;  
**Galina Kolosovskaya**/oil;  
**Terry Pellmar**/mixed media;

**Sandra Perez-Ramos**/ink; and **Fleur de Virginie**/oil pastels, oil. The Kensington Park Library is located at 4201 Knowles Avenue, Kensington, MD. Library Hours are Monday, Wednesday, Friday & Saturday from 10 am - 6 pm. On Tuesday

& Thursday from 1 pm - 8 pm. They are closed on Sunday. There are still a few days left so drop by and see the great artwork.

## Congratulations to Sandra Perez-Ramos

MAA member **Sandra Perez Ramos** had two of her "hybrid" artworks, temporary fiber arts sculptures documented through photography, accepted at FonFoto, A Juried Mobile Photography Exhibit in Petaluma Arts Center, in California. The show runs from May 9-July 6. It is an interesting show that "explores the capability and viability of the camera phones as a tool among artists and photographers. Congratulations to Sandra.



*Vicky Surles At Penn Place*



*Lisa Mathis*



*Kenetta Torso, by Vicky Surles*



*Sugar Cane Cutters, Jamaica, by Vicky Surles*

# Art News

## **Woman's Club of Potomac Art Show – Open Call Announcement:**

The Woman's Club of Potomac Art Show and Sale invites all metropolitan visual artists, age 18 and over to participate in their show held on Saturday and Sunday, June 7- 8, 2014 at the Potomac United Methodist Church, Parish Hall. The show will be a dynamic collection of multi- media works and photography. The exhibition will contain approximately 250+ entries. Registrations will be accepted from March 1 to May 2. This exciting community event will involve multiple area businesses for added promotion, with many gift item door prize opportunities for the public.

The WCP Art Show is held for the benefit of the Woman's Club Benevolent Fund in support of local charities. No commission is taken. The artwork will be juried for prize awards by Glen Kessler. Glen is an internationally collected artist and instructor at the Capitol Arts Network, and the Yellow Barn at Glen Echo Park. A registration form will be made available via the MAA website in the very near future. Watch for the announcement in your email. For questions contact, Pat Choquette - Curator: Custom\_Interiors@ChoquetteInteriorDesign.com.

## **Call For Artists: City of Gaithersburg**

The City of Gaithersburg has issued a call for artists for 2015 shows at its galleries at the Arts Barn, Kentlands Mansion and the Activity Center at Bohrer Park. All applications must be received or postmarked by 5 PM on May 30,

2014. The jury selection process will take place June 16-20. Artists will be notified of their selection status between July 7 and July 11. Selected artists will have shows that will run between January 1 and December 31, 2015. Applications are available from the City of Gaithersburg. Mail applications to Arts Barn, Call to Artists, 311 Kent Square Road, Gaithersburg, MD 20878. For questions call Andi Rosati at 301-258-6350 or email her at arosati@gaithersburgmd.gov.

## **Call For Artists: "Paint Out Westminster"**

An plein air event and exhibit will be held on Saturday May 10, 9 am-3:30 pm with a followup exhibit from May 13-June 7, 2014

Registration for the event closes on Saturday, May 3, 2014. "Paint Out Westminster" will be held in conjunction with Westminster's ever-popular Flower and Jazz Festival on historic Main Street. This is a wonderful opportunity for artists to create work in a community setting and be part of an exhibition opportunity. This event will be held rain or shine. Artists 18 and older are invited to participate. Members of the Carroll County Arts Council may register for free. Non-members will be \$10. Artists will be placed in picturesque and historic spots from McDaniel College on W. Main St. to Birdie's Coffee. Further details will be emailed to all participating artists. For questions, please contact susan@carrollcountyartscouncil.org. 410/848-7272

## **MAA Announces a New Museum Tour To The National Gallery of Art**

We are pleased to announce that MAA's Activities Chair, Marcia Bhorjee has organized another museum visit. The field trip is to the National Gallery of Art and is scheduled for Tuesday, May 20th at 1:00 pm. We will meet in the West Building Lecture Hall on the ground floor of the West Building where a docent will present a lecture and slide show to introduce the Degas- Cassat exhibit. At 2:00, we will proceed to the main floor to view the exhibit. An exhibition of Andrew Wyeth paintings "Inside,Outside" is being held concurrently at the NGA.

This is an open invitation to all MAA members—there is no sign up and of course, no fee. Please plan to join us.

REMEMBER  
THESE:

# UPCOMING dates

## May 4

3-5pm: Spring Amici Miei Restaurant Show Reception:  
Sunday, 5/4, 3 pm.

## May 14:

Monthly Meeting, Plaza Art Rockville, 6:30-8:30. Social  
period begins at 6:30 pm and program begins at 7:00 pm.

## May 20:

Deadline for Newsletter Input

## June:

WSSC Art Gallery Show in WSSC Lobby (20-40 pieces). On-  
line Registration Deadline: 5/16, midnight; Show Hanging:  
Monday, June 2, 10 am; Show End, Monday, June 30, 10  
am. Room for approximately 40 pieces.

## June:

Annual Show at the Friendship Heights Village Center. Re-  
duced space available this year--room for about 50 pieces.  
Online Registration Deadline: 5/23, midnight; Dropoff:  
6/1, 9:30-10:30 am; Show Judging: Sunday, 6/1, 11 am;  
Show Hanging: Sunday, 6/1, noon; Reception: Sunday,  
6/8, 11:30 am - 1:30 pm; Show End and Pickup, Sunday,  
6/29, 10:00 am.

## June:

Summer Amici Miei Restaurant Show. Online Registration  
Deadline: 6/20, midnight; Show Hanging: Sunday, 6/29,  
3 pm; Reception: Sunday, 7/6, 3 pm; Mid-Show Switch,  
Sunday 8/3, 3 pm; Show End, Sunday, 9/7.

## July 9:

Summer Social Get-Together, 6:30-8:30 pm, MAA Gallery,  
Westfield Wheaton. Bring a dish to share and something to  
drink. Featured Artist drawing for October through March.



## MAA GALLERY SHOWS AND DATES

The Gallery is open 7 days/per week—Monday through  
Saturday, 11am to 8 pm and Sunday, 11 am to 7 pm. To  
show in the Gallery, you need to be a current MAA mem-  
ber and must “Gallery-sit” at least two shifts (8-10 hours).  
If, in addition to “wall” pieces, you would like to display  
bin works and cards, there is an additional \$25 annual fee  
from the current date to September 30, 2014. There is a  
\$10 monthly participation fee to display any work in the  
Gallery for sale. For works sold, MAA takes its standard  
25% commission. If you’ve not previously shown in the  
Gallery, you must take a Gallery training class. If you are  
interested, please review the FAQ: MAA Gallery piece on  
the website Resources page and contact Cathy Hirsh at  
hirshcathy@gmail.com.

## May: Featured Artist: Carol Bouville

Information about pieces (title, media, price) regis-  
tered online by Friday, 4/25  
Drop-off (or pickup for the previous show)—Sunday

4/27 5-7 pm or Monday 4/28, 10-noon  
Show hanging – Monday 4/29 afternoon.  
Show opening reception— Sunday 5/4, 1-5 pm  
First day of show—Tues, 4/30; Last day of show—  
Monday, 5/26

## June: Featured Artist: Sandra Perez-Ramos

Information about pieces (title, media, price) regis-  
tered online by Friday, 5/23  
Drop-off (or pickup for the previous show)—Monday  
5/26 5-7 pm or Tuesday 5/27, 10-noon  
Show hanging – Tuesday 5/27 afternoon.  
Show opening reception— Sunday 6/1, 1-5 pm  
First day of show—Wed, 5/28; Last day of show—  
Sunday, 6/29

## July: Featured Artist: Pamela Gordimer

Information about pieces (title, media, price) regis-  
tered online by Friday, 6/27  
Drop-off (or pickup for the previous show)—Sunday  
6/29 5-7 pm or Monday 6/30, 10-noon  
Show hanging – Monday 6/30 afternoon.  
Show opening reception— Sunday 7/6, 1-5 pm  
First day of show—Tues, 7/1; Last day of show—  
Sunday, 7/27

## August: Featured Artist: Belindah Jones

Information about pieces (title, media, price) regis-  
tered online by Friday, 7/25  
Drop-off (or pickup for the previous show)—Sunday  
7/27 5-7 pm or Monday 7/28, 10-noon  
Show hanging – Monday 7/28 afternoon.

SEE PAGE ELEVEN



REMEMBER  
THESE:

# UPCOMING dates

## FROM PAGE TEN

Show opening reception— Sunday 8/3, 1-5 pm  
First day of show—Tues, 7/29; Last day of show—  
Sunday, 8/24

### September: Featured Artist: Robin Frosh

Information about pieces (title, media, price) regis-  
tered online by Friday, 8/22  
Drop-off (or pickup for the previous show)—Sunday  
8/24 5-7 pm or Monday 8/25, 10-noon  
Show hanging – Monday 8/25 afternoon.  
Show opening reception— Sunday 9/7, 1-5 pm  
First day of show—Tues, 8/26; Last day of show—  
Sunday, 9/28

### October: Featured Artist: TBD

Information about pieces (title, media, price) regis-  
tered online by Friday, 9/26  
Drop-off (or pickup for the previous show)—Sunday  
9/28 5-7 pm or Monday 9/29, 10-noon  
Show hanging – Monday 9/29 afternoon.  
Show opening reception— Sunday 10/5, 1-5 pm  
First day of show—Tues, 10/1; Last day of show—  
Sunday, 11/2

### November: Featured Artist: TBD

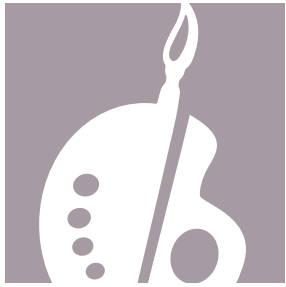
Information about pieces (title, media, price) regis-  
tered online by Friday, 10/31  
Drop-off (or pickup for the previous show)—Sunday  
11/2 5-7 pm or Monday 11/3, 10-noon  
Show hanging – Monday 11/3 afternoon.  
Show opening reception— Sunday 11/9, 1-5 pm  
First day of show—Tues, 11/4; Last day of show—  
Sunday, 11/30

### December: Featured Artist: TBD

Information about pieces (title, media, price) regis-  
tered online by Friday, 11/28  
Drop-off (or pickup for the previous show)—Sunday  
11/30 5-7 pm or Monday 12/1, 10-noon  
Show hanging – Monday 12/1 afternoon.  
Show opening reception— Sunday 12/7, 1-5 pm  
First day of show—Tues, 12/2; Last day of show—  
Sunday, 1/4

## Alan Hirsh Reception





## GALLERY NEWS AND NOTES

This part of the newsletter is designed to provide you with art news and information about interesting shows at the many local art galleries. If you are aware of an event, news or an exhibit, large or small, that you think would be of interest, please send an email to [JUlevineRN@aol.com](mailto:JUlevineRN@aol.com). If going to one of the galleries you have not been to we urge that you contact the gallery or its web site to ask about directions and transportation. Many of the galleries in DC are accessible via Metro and parking can be a problem. Unless otherwise noted, admission is free.

### The Corcoran Gallery of Art

510 17th St NW, Washington, DC (202) 639-8574

The Corcoran will be going through many changes in the near future. This is the most current information I have, I urge you to check before making the trip to the gallery at this time.

### Rineke Dijkstra: The Crazyhouse

March 29, 2014-June 15, 2014

All three of these pieces are site specific installations. Dijkstra's work is one that will be completed during its time at the gallery.

### American Journeys - Visions of Place

September 21, 2013-September 21, 2014

The Corcoran has chosen to rehang 110 of its pre-1945 collection. The exhibition will be divided into 4 areas, *Pride of Place: The New Nation*, *"The Lure of Paris"*, *"New York in the New Century"*, and *"Beyond Borders: Modernism"*. The gallery is also



*Frostbitten, by Andrew Wyeth*

preparing to become the extension of the National Gallery's East Wing as that institution prepares to close for a three year renovation.

### The Phillips Collection

1600 21st St., NW, Washington, DC 20009 Information- 202-387-2151  
\$12 -adults, \$10 -62 and over and students, free for members and visitors 18 and under

### Made in the USA American Masters from The Phillips Collection,

1850-1970

March 1, 2014 - August 31, 2014

### Intersections

Intersections, a series of projects explores the way two, sometimes radically, different objects relate and join together. Each project explores new traditions, modern and contemporary art practices, and museum spaces and artistic interventions. It branches into both traditional and non-tradition exhibition spaces with some surprising and intriguing results.

### Intersections: Vesna Pavlović Illuminated Archive

May 22, 2014 - September 28, 2014

### The National Gallery of Art

4th and Constitution Avenue NW, Washington, DC 20565 General Information: (202) 737-4215 (Unless otherwise noted all exhibits are in the West Wing; the East Wing is currently closed for renovations.)

### Orphee - Marc Chagall

This mosaic, composed of 10 panels, originally graced Evelyn Nef's garden in northwest Washington DC for which it was designed. It was here I first had the privilege of seeing it. She and her husband, close friends of the artist and his wife, had decided to gift it to the National Gallery and, per Mrs. Nef's wish it was eventually decided that the Sculpture Garden was the best place for it. I must agree that the outdoor site is the best site. I urge you to go and enjoy the tranquility of both the mosaic and the garden which is its new home.

### Degas/Cassatt

May 11 - October 5, 2014  
This exhibit explores their close friendship and the effects they had on each other's styles and subject matter.

### Andrew Wyeth: Looking Out, Looking In

May 4, 2014 - November 30, 2014

SEE PAGE FOURTEEN

## GALLERY NEWS AND NOTES

FROM PAGE THIRTEEN

Recently gifted to the museum and one of his best known paintings, Wyeth's *Wind from the Sea* (1947), was chosen as the centerpiece of this 60 works show. Wyeth has used windows repeatedly throughout his long career. Though often thought of as a very representational painter, he has stated that he works as an abstract artist. I hope the attendees will be able to understand this after seeing these masterworks.



*Ernst Ludwig Kirchner, German, 1880–1938, Russian Dancers, 1909. Modern German Prints and Drawings from the Kainen Collection*

### Modern German Prints and Drawings from the Kainen Collection

February 23, 2014 – June 29, 2014

Ruth Kainen left the gallery a bequest from which most of these 123 works are drawn. Included are watercolors, drawings, etchings, woodcuts, lithographs, and illustrated books by Nolde, Heckel, Schmidt-Rottluff, and Ernst Kirchner. The show covers precursors and successors to the expressionists, such as Kolbe, Klinger, and Ludwig Meidner, plus the renown Egon Schiele.

### From the Library: Grega and Leo A. Daly III Fund for Architectural Books

February 15, 2014 – August 17, 2014

City Planning and Improvements, Studying the Masters, Purpose Built, Architectural Details—this exhibit allows the visitor to explore the who, what, where, when and what

of public buildings. It allows the visitor to better understand how a building came about, what drove the architect, even how its' very right to be was marketed.

### City Planning and Improvements, Studying the Masters, Purpose Built, Architectural Details

—this exhibit allows the visitor to explore the who, what, where, when and what of public buildings. It allows the visitor to better understand how a building came about, what drove the architect, even how its' very right to be was marketed.

### Hirshhorn Museum and Sculpture Garden

Independence Avenue at Seventh Street SW Information: 202-633-1000 or 202-633-5285 (TTY) This gallery focuses on contemporary artists.

### Gravity's Edge

February 7, 2014– June 15, 2014

Look at how gravity and the use of the very hard edge began to change how artists created work starting in 1959. It will allow the viewer to explore both Modernist narrative of Color Field works by Frankenthaler, Louis, Noland, Paul Jenkins, and Sam Francis alongside contemporary sculptures by Lynda Benglis and Anne Truitt. The attendee is able to see how Washington's own Colour School came into existence.

### The Sackler Gallery/ The Freer Gallery

1050 Independence Avenue, SW. 202-633.1000 The joint galleries house one of the world's great collection of Asian arts.

### An American in London: Whistler and the Thames

May 3, 2013–August 17, 2014- Sackler

### Kiyochika: Master of the Night

March 29 2014–July 27, 2014- Sackler,

An exhibition of Meiji-period woodblock prints, with the city of Tokyo as the focus.

### Jars

March 15, 2014

Who says that utilitarian and beautiful are exclusionary? This exhibit will certainly cure its viewers of that idea. The jars are from China, Japan, Vietnam, Thailand, and Burma and were used for packing, shipping, and storage. Most assuredly a far cry from the cardboard boxes of today.

### Chigusa and the Art of Tea

February 27, 2014–July 27, 2014

### Chinese Ceramics for Tea in Japan

March 1–September 14, 2014—Sackler

The perfect chance to understand the place of tea and the meaning of the tea ceremony will be found in these two exhibi-

SEE PAGE FIFTEEN



## GALLERY NEWS AND NOTES

FROM PAGE FOURTEEN

tions. Chigusa's focus is on the ceremony within Japan and the Chinese Ceramics looks at how China provided exquisite pots and other items needed in this very special part of Japanese culture.

### **Bountiful Waters: Aquatic Life in Japanese Art**

March 1-September 14, 2014-Freer

### **Off the Beaten Path:**

#### **Early Works by James McNeill Whistler**

September 28, 2013-September 28, 2014  
Freer

#### **National Museum of the American Indian**

Fourth Street & Independence Ave, S.W.



*From Off the Beaten Path, James McNeill Whistler*

Washington, DC 20560  
202-633-1000

### **Indelible: The Platinum Photographs of Larry McNeil and Will Wilson**

June 07, 2014-January 15, 2015

Using a Nineteenth Century technique, these photographers explore the faces of fellow Native Americans. Both challenge the viewer to recognize that Native Americans, regardless of how much they integrate their traditional culture into their daily lives, remain as much a part of modern life as any other citizen.

### **National Museum of African Art**

950 Independence Avenue, SW Washington, DC (202) 633-1000

### **Visions from the Forests: The Art of Liberia and Sierra Leone**

William Siegmann (1943-2011), former curator of African art at the Brooklyn Museum lived in Sierra Leone between 1965 and

1987 where he amassed this wonderful and varied collection. It will teach the attendees much about the traditional culture of the country between the 15th and 18th centuries.

### **African Mosaic: Celebrating a Decade of Collecting Ongoing**

The centerpiece of this exhibition is the sculpture of Haitian leader Toussaint Louverture by Senegalese sculptor Ousmane Sow. The curator states that he wants the viewers to challenge themselves, to ask what, why and how each of these pieces was created physically as well as the overall meaning of each work.

### **Renwick Gallery**

1661 Pennsylvania Ave NW, Washington, DC (202) 633-7970

The Renwick's main focus is on the decorative arts.

### **National Portrait Gallery/Smithsonian American Art Museum**

8th St. at F St., NW, Washington, DC 202) 633-1000 (voice/tape) The National Portrait Gallery (NPG) and the Smithsonian American Art Museum (SAAM) both contain many permanent exhibits that easily allow for many visits. These two connected galleries, which are part of the Smithsonian Institution, form a national treasure of American paintings and sculpture. The buildings just reopened recently after a nearly 6 year renovation which has restored them to their original states. This included restoration of the exquisite stained glass windows in both ceilings and walls, and the repair of the beautiful floor and wall tiling.

### **Yousuf Karsh: American Portraits-NPG**

May 2, 2014-November 2, 2014

### **Face Value: Portraiture in the Age of Abstraction**

April 18, 2014 - January 11, 2015

Alice Neel, Elaine de Kooning, Rauschenberg, Beauford Delaney, Bearden, Fairfield Porter, Jamie Wyeth are some of those painters who found themselves in the odd position of doing works that defied what was happening in the art world of 1945 to 1975. These painters will show you how they grappled with representing the human face in form in an age where it was considered out of touch art work.

### **Modern American Realism: The Sara Roby Foundation Collection**

February 28, 2014 - August 17, 2014

Paul Cadmus, Edward Hopper, and Jacob Lawrence are but a few of the artists represented in this collection that spans 1910 to 1989. While technically the works encompass an American view of realism,

SEE PAGE SIXTEEN

## GALLERY NEWS AND NOTES

FROM PAGE FIFTEEN

many stray so far from the path that one of the curators said he struggled with this definition. MAA members might enjoy William Kloss' lecture on March 7 at 6:00 PM at the gallery, when he explores just what this means in a lecture entitled Roby Realism

### Pop Art Prints-SAAM

March 21, 2014 – August 31, 2014

Focusing on the 1960's, the visitor will be able to see how the artists represented used lithography and serigraphy to allow multiple prints in order to reach more patrons who wanted original works. Highlighting the culture of the time, most of the works are bright, often comic strip like.

### American Cool -NPG

February 7, 2014 -September 7, 2014

Fine-art photographers from Henri Cartier-Bresson to Annie Leibovitz, from Richard Avedon to Herman

Leonard to Diane Arbus define the word "cool". 'Nuff said.

### Dancing the Dream

October 4, 2013 -July 13, 2014

Spanning nearly a hundred years, the images in this show look at dancers from Isadora Duncan to Lady Gaga. Its purpose is to explore the relationship between dance and the world around it. It will give patrons a chance to explore this most ephemeral of art forms.

### National Museum of Women in the Arts

1250 New York Avenue, N.W., Washington, DC 20005-3970 202-783-5000, 1-800-222-7270

### Meret Oppenheim: Tender Friendships

April 26, 2014-September 14, 2014

### The First Woman

**Graphic Novelist: Helena Bochořáková-Dittrichová**  
May 12, 2014-November 14, 2014

## OTHER SHOWS and GALLERIES

### Walters Gallery

600 North Charles Street  
Baltimore MD  
(410) 547-9000  
Wednesday through Sunday, 10 A.M. — 5 P.M.

### Goldman Art Gallery

The Jewish Community Center of Greater Washington  
6125 Montrose Road, Rockville, MD 20852 301-881-0100  
Monday, Wednesday, Friday-9 a.m. – 5 p.m.  
Tuesday, Thursday- 9 a.m. – 7 p.m. Sunday 10 a.m.-2 p.m

### BlackRock Center for the Arts

12901 Town Commons Drive, Germantown, MD 20874 301.528.2260 (administrative offices)

### Vivid: Susan Makara and Leslie Nolan-Main Gallery

May 7, 2014 -June 6, 2014  
Both are portraitists but Nolan chooses a more

representational view and Makara sees the world through the fantastical and otherworldly lens.

**Aziza Claudia Gibson-Hunter: Invitation to a Metaphor-Terrace Gallery**  
May 7, 2014 -June 7, 2014  
Artist Receptions-Saturday, May 10, 2014, 5:30 PM – 7:30 PM

### The Mansion at Strathmore

10701 Rockville Pike North Bethesda MD 20852  
For more information call (301) 581-5125. Free and Open to the Public

### A Shared Universe: The Art of Comic Books

April 12, 2014 - June 8, 2014, Reception-Thursday, April 24, 7 - 9PM

### Adah Rose Gallery

3766 Howard Ave Kensington, Maryland 20895 (301) 922-0162 email-adahrose-gallery@gmail.com

### "Contemplating the Sweetness of Grass and Startling Brevity of Life"

May 16, 2014 -June 8, 2014. Reception-, live music by the New White Chihuahua May 18, 2014- 3:30 PM to 5:30PM  
Studio 155: Roberta Bernstein, Elizabeth Carter, Wendy Cortesi, Jan Denton, Jill M. Hodgson, Betsy Kelly, Vicki Malone, Eileen Malone-Brown, Donald B. Meyer, Kappy Prosch, Michael Rawson, Eva-Maria Ruhl, Ellen Tuttle, Juliana Weihe, S.M. Wilson and Neena Birch

### Hillyer Art Space Exhibitions

9 Hillyer Ct. NW, Washington, D.C. 20008  
Mon 12-5 , Tues-Fri 12-6, Sat 12-5 ,and by appointment; 202-338-0680; gallery@artsand-artists.org

Eszter Bornemisza (Budapest), Jerri Hasnain (Leesburg, VA), and Pam

SEE PAGE SEVENTEEN

## GALLERY NEWS AND NOTES

FROM PAGE SIXTEEN

Rogers(Bethesda, MD, are the artists of note at Hillyer this month.

### The Artists' Gallery

4 East Church Street, Frederick, MD 21701 301-696-8187 www.the-artists-gallery.org Fri-Sun 12-5, or by appointment.

### Lisa T. Reed: Pattern and the Transformation of People & Things.

#### Marc Weinberg: Small Windows, Powerful Visions

May 2, 2014 -June 1, 2014 ,reception 5:00 PM to 9:00 PM

Reed explores the changes that occur in her paintings as she teaches, and also looks at the need that humans tend to make in things around them. Weinberg's photos of the Frederick countryside allow the viewer small, intimate

interactions with a part of Maryland he loves

### VisArts at Rockville

155 Gibbs Street, Rockville, MD 20850 (301) 315-8200

### Liz Lescault and Alison Sigethy: Fathom Full

**Five: Going Deeper** (Gibbs Gallery)  
April 30,2014 to Sunday, June 1, 2014

### TARNISH: Studio Art Quilt Associates (SAQA) (Kapan Gallery)

May 2, 2014-June 1, 2014

### Painting With Thread: Embroidery Arts Exhibition from China (Common Ground Gallery)

May 9, 2014-May 11, 2014

Receptions for all exhibits: Friday, May 9 - 7:00 PM to 9:00 PM

## MAA Board for 2013-2014

### President

#### Michael Shibley

301-807-6890  
mfs-art@comcast.net

### 1st Vice President, Programs

#### Pauline Rakis

301-622-1748  
prakis1040@aol.com

### 2nd Vice President, Shows

#### Elizabeth Stecher

301-593-8305  
estecher7@verizon.net

### Secretary

#### Marcia Bhorjee (Acting)

301-493-4665  
mbhorjee@gmail.com

### Treasurer

#### Barrie Ripin

301-346-6867  
bripin@verizon.net

### Associate Treasurer

#### Behrouz Sarabi

301-460-2586  
Behrouz.sarabi@gmail.com

### e-Newsletter Editor

#### Michael Shibley

301-807-6890  
mfs-art@comcast.net

### e-Newsletter Editor (design)

#### Natalie Falk

301-384-0417  
nmfalk@comcast.net

### e-Newsletter Reporter & Children's Activities Coordinator

#### Judith Levine

301-869-6811  
julevinern@aol.com

### Activities Committee Chair

#### Marcia Bhorjee

301-493-4665  
mbhorjee@gmail.com

### Hospitality Committee Chair

#### Roxanne Ando

301-622-9541  
PNPPaintbrush@gmail.com

### Membership Committee Chair

#### Sandra Cepaitis

301-564-0331  
slcep@msn.com

### Gallery Committee Chair Past President

Cathy Hirsh  
301-622-0546  
hirshcathy@gmail.com

### Publicity Committee Chair

#### Vicky Surles

240-604-5377  
vsurlesGraphics@comcast.net

### Facebook Page Coordinators

#### Victoria Squire

202-352-6664  
victoria\_squire@yahoo.com

### Janet Fox

301-326-4327  
jfoxdreamart@aol.com

### Special Shows Coordinator Virginia Montet

202-285-2329  
vmontet2002@yahoo.com

### Technology Committee Chair

#### Joseph Jones

240-271-4641  
waazaji@yahoo.com

### Outreach Committee Chair Past President

#### Laura-Leigh Palmer

240-354-5454  
Laura.leigh@asapgraphics.com

### Supporting Staff

#### Accounting Advisor:

**Sue Meyer**  
301-384-4777  
susanmeyercpa@verizon.net

### Web Content Manager Past President

Cathy Hirsh  
301-622-0546  
hirshcathy@gmail.com

### Technical Website Manager:

**Heather Stobo**  
213-321-3919  
hstobo@gmail.com