

in this issue ...

Featured Artist, Judith Levine, 1

MAA Meeting, 4

New Members, 4

President's Message, 5

Celebrating 60 Years, 6

Call for Nominations, 7

Winter Get-together, 9

Upcoming Dates, 10

Art News, 12

Member Events, 12

Art News & Gallery Notes, 13

Featured Artist: Judith Levine

This month's featured artist at the MAA Gallery in Wheaton is one of the dedicated members of our MAA newsletter team Judith Levine. You know Judith as the co-editor of MAA News who collects the gallery news and notes and who does our



Featured Artist Judith Levine

featured artist interviews each month. You may or may not also be aware that Judith also spends a great deal of time managing MAA's children's activities at the Mall and other locations. Clearly, she is a very busy person.

This month, we get to turn the tables on Judith a little bit and look at her from a more personal perspective. Hopefully, we will all get to know her a little bit better.

When her name was selected to be the March Featured Artist, the question immediately arose—"who is going to do the artist interview?" "I can't interview myself," Judith said. Give artists a challenge and they will figure it out. We did. So now let's look at Judith Levine—the artist.

Judith was born in Washington, DC, and grew up in DC and



Walk In The Garden, by Judith Levine

in Montgomery County. She lived in Toronto for a year with her family. Interestingly, she has dual Canadian and American citizenship. After high school, Judith attended the Univer-

sity of Maryland where she studied art from 1963-1966. After leaving school, she worked in the recording industry for six years and spent some time in retail working as a buyer. She returned to school and graduated from the University of Maryland Baltimore County (UMBC) in 1989 with a BSN in nursing. Judith has been a professional nurse for 25 years, managing HIV and cancer programs as her specialty areas. She continues to work with DC Cancer Consortium, a professional group of major cancer care providers in Washington, DC, writing educational materials. In this role, Judith has been able to use her skills as an artist in her materials, especially those designed for patients who are functionally illiterate.

SEE PAGE TWO

Judith was very kind to respond to a number of questions about her art interests and influences and her experiences as a member of MAA. You will find her responses informative about who Judith is both as a person and an artist.

How and when did you become interested in art?

“I have painted and drawn my entire life. By the time I was 15, I knew that art was who I was. Earning a living at art was not generally viable for women in the 1960’s and I was unwilling to bend to what might be seen as following the trends at the time. I love the Washington Color School—especially Gene Davis—but it is not how I paint. I looked into commercial art but don’t really have the talent for this art form. I decided to



Keith, by Judith Levine

follow Picasso’s advice and earn a living at something else and just paint when, how and what I chose. In high school I became active in theatre production and continued to do this for many years.”

What kinds of art media most appeal to you?

“I have worked in oils, pastels, encaustic, pencil, pen and inks, conte crayon, and watercolors mostly. A big part of this is being able to work with the purest forms of

pigments. I love the intensity of color. And I love to be able to work not only with brushes and other implements, but I love to use my fingers directly in the media too. I love trying different media and have experimented with more things than I can remember. I am

a crafter too and experiment with that.”

How has your art developed over time?

“My first works were in pastels and oils, in part because like many other people, I thought that was what ‘real’ artists worked in. Luckily, I had some wonderful teachers in junior and senior high school and at university who soon taught me otherwise. In high school, I was the co-art editor of our school’s French lan-

guage journal and we won several national awards because of the art work. In high school I was lucky enough to study with Faye Sherry and Douglas Teller. At university, I studied with Cliff Chieffo and George O’Connell. One gift each of them gave me was that of encouragement to follow my dream and never stop painting. Each of them urged me to keep experimenting and growing. I have never stopped being grateful of these teachers, especially Professor O’Connell, who told me he would only let me drop out of school if I promised not to stop painting!”

How did you become involved in MAA?

“I attended the Kensington show about 10 years ago with friends and met Sandy Cepaitis. I decided any group with her in it would be one I would enjoy. I enjoy being part of the MAA Board because I believe that it is a beneficial way to express my opinions

regarding how our group develops.”
“I began working with the newsletter about 7 years ago, as an editor, and then chose to become a reporter. I find it entertaining and informative to focus on local gallery news. Interviewing featured artists is something, I adore doing. It is because of these interviews that I have gotten to know so many of my fellow artists in a better capacity.”

How did you get involved with doing children’s activities?

“When we opened the MAA Gallery, I saw an opportunity to work with kids, something I have always enjoyed. I elected to chair the Children’s Activities. Encouraging children to create is gratifying not only for their refreshing take on things but because no one has yet told them what they can’t do with their artwork. I love seeing the way they picture the

SEE PAGE THREE

Levine

FROM PAGE TWO

world. The idea that any child may journey to their own lifelong path into art because of the pleasure they had doing one of our projects is immeasurable.” Now, I also get to be creative during the Smithsonian Folklife Festival every summer and cultivate the desire to be creative while working on the children’s projects.

What do you see as the most valuable part of your membership?

“The best is the chance to get to know so many talented artists from so many different cultures. As we have grown we now have the good fortune to have so many artists working both in current styles and media as well as traditional ones.”

“The MAA Gallery has allowed me yet another excellent way to show my work. Once my finances ease up again I hope to be able to start exhibiting again. I find gallery sitting

stirs my creativity very frequently and the chance to spend time with my fellow artists and our patrons is important to me.”

What artists or artistic styles have had the most influence on you?

“So many, but I would start with Van Gogh. The intensity of color and the passion he had for painting blew me away. Botticelli’s exquisite detail defines his work and yet it is never fussy.

I could look at Rothko’s subtle colors and Gene Davis vibrant stripes all day. The work of the Inuit and First Nations peoples of the Pacific Northwest with the focus on the spiritual relationships between humans and

the natural world taught me that my art must encompass all aspects of who I am if it is to say anything to a viewer.”

What non-artist has had the most influence on you?

“A group of people, those I worked with in theater starting with Richard Pioli, our HS theater teacher, my cohorts in University Theater and community theater. I worked

in production. The need to express themselves in a different mode opened my eyes to so many other ways to speak one’s mind besides paint.”

If you could come back in another life as an artist, who would it be?

“Just me, because I believe everyone has inherent worth. I don’t think we need to be other than the best of who we are. I might like a chance to briefly see the world through someone else’s eyes but have no need to

SEE PAGE FOUR



Flight, by Judith Levine



Rehearsal Study of Cheryl Thomas, by Judith Levine

Levine

FROM PAGE THREE

permanently be them.”

What made you decide to put your name in the jar for possible selection to be the Featured Artist at the Gallery?

“Why not?”

Why not indeed! It is clear from Judith’s responses that she is a free spirit and a free-thinker. Her art reflects her view on life and will be on display at the MAA Gallery at Westfield Wheaton Mall from Tuesday, March 4 through Sunday, March 30.

There will be a “Meet the Artist” reception on Sunday, March 9 at the Gallery from 1:00 – 5:00 PM. Don’t miss this opportunity to meet Judith in person and talk to her about her art. The Featured Artists put a lot of work into their displays so be sure to put a visit to see Judith’s art on your calendar. Why not?

MAA MEETING march 12, 2014

Our next regular MAA monthly meeting will be held on Wednesday, March 12 from 6:30 – 8:30 PM. Our guest presenter will be **Ann Gordon**. Ann was the featured artist at the MAA Gallery in February. She will offer her professional suggestions for successfully framing and presenting your artwork. This is information of value to all artists.

The meeting will be held at Plaza Art located at 1776 E. Jefferson Street on the back side of the Federal Plaza Shopping Center. There is plenty of parking. The social time will begin at 6:30 with the program beginning at 7 PM. Come and chat with your fellow members and then enjoy the presentation.

Welcome to New Members

Since the last newsletter, we have added four new members to our MAA family. Please welcome the following individuals:

Hollie Carter

Shannon Cockett

Sarah Province

April Rimpo

With addition of these new members, we now have 221 active members of MAA. Please help your local art association continue to grow and prosper. The MAA Gallery continues to draw new members into our group. It’s an easy sell to talk to your artist friends about the benefits of being part of a dynamic art association. Recruit a new member today!

MAA—serving its members since 1954. Celebrating 60 years of service in 2014!!

We apologize to any members whose names are not listed. We will catch up with you next month.

Artist Quote of the Month

“A line is a dot
that went for a
walk.”

— Paul Klee



Ad Parnassum, by Paul Klee

The deadline for submissions for
the April newsletter is March 20.

President's Message

As we head into Spring--hopefully--I want to begin our focus on the celebration of 60 years of MAA's service to artists in the Washington metro area. In earlier issues, I mentioned that we will be writing pieces about the history of our great Association. In conjunction with the Kensington Paint the Town Show in September we will be having a big birthday recognition event to conclude our 60th year. So stay tuned for more about that exciting event.

One of the Newsletter features will be interviews with past presidents from two or three decades past who will share their experiences and talk about

what the association was doing in those days. It will be an interesting discussion. In my recent discussions with a past president from the early 1990s, I mentioned that our membership had grown to 221 members. "Oh, my. We struggled to get to 40 or 50," was the response. Clearly, since those days, our association has grown solid financially and from a membership standpoint.

Additionally, we will be featuring articles providing more general information about the formation of the association and how it developed. This month, we begin with a quiz to test your knowledge of the MAA--formerly known as MCAA, the Montgomery County Art Association.

The answers to the questions will be published next month along with the first of our interviews with past presidents. So look forward to that.

As we do every month in the Newsletter, we focus on our Featured Artist at the MAA Gallery. This month's artist is **Judith Levine**. Judith is an active member of the MAA Board of Directors and is in charge of MAA's children's outreach activities. She has been interested in art since childhood and has explored many different mediums over the years. When you read her interview you will come to know an individual who has very strong feelings about her association, her art, and what she tries to achieve through art.

And, it's time once again for you to offer nominations for individuals to sit on the MAA Board of Directors. The nominations process will run until March 20 and we will hold elections in April with results announced in May. So if you would like to nominate someone who you feel will help MAA develop in its next 60 years, please read the article in this issue that explains both the process and the time-line.

In closing remember the MAA artists show at Amici Mei featuring **Sandra Perez-Ramos, Galina Kolosovskaya, Barbara Mertens** and **Michelle D. Morgan** continues through April 13. MAA offers you a lot of opportunities to show your work. If you

would like to see one of the very nice venues drop by Amici Mei in Rockville and check it out. You can apply for the Spring show through the MAA website. Get the most out of your membership dollar by taking advantage of the shows at Amici Mei, the MAA Gallery, and other locations.

That's it for this month.

MAA--serving its members since 1954! Now celebrating 60 years of quality programs and opportunities for local artists.

Michael Shibley



Here is a little quiz that will challenge your knowledge of the history of MAA. It's fun and gives you the names of individuals who were instrumental in getting our association started. We have been going through the files from the early years and some information is not available. Yes, it's a long time ago, but give it a try. The correct answers along with a list of all 60 MAA presidents from 1954 to the present will be provided in the April issue.

What month and year was the organization officially founded?

- a.) April, 1954
- b.) July, 1954
- c.) October, 1954
- d.) January, 1954

What was our official name when the organization began?

- a.) Montgomery Association of Artists
- b.) Montgomery County Association of Fine Art
- c.) Montgomery County Art Association
- d.) Art League of Montgomery County

Where was the first association-sponsored art show held?

- a.) Kensington Armory
- b.) Wheaton Chamber of Commerce
- c.) Wheaton Library
- d.) Bethesda Library

Who was the first president?

- a.) A. W. Postel 1954-1955
- b.) Rita Schaefer 1954-1957
- c.) Grace Williams 1954-1956
- d.) Martha Lloyd 1954-1955

Who were the members of the founding committee of the association?

- a.) Rita Schaefer, Dr. Harold Chalkley, and Grace Williams.
- b.) Lidell Burford, Katheryn Mullin, Dorothy Postel, Gustav Trois, and Grace Williams.
- c.) Dr. Harold Chalkley, Wayne Peterson, Lidell Burford
- d.) All of the above.

The first record of a meeting where minutes were kept was held when?

- a.) July, 1954
- b.) May, 1954
- c.) January, 1954
- d.) September, 1954

What were the annual dues in 1975?

- a.) \$10
- b.) \$7.50
- c.) \$5
- d.) \$12.50

When did the Kensington Labor Day Show—n its current format—become a regular event for MCAA/MAA?

- a.) 1989
- b.) 1995
- c.) 1990
- d.) 1991

In what year was the name officially changed to MAA?

- a.) 1999
- b.) 2003
- c.) 2009
- d.) 2005

MAA ELECTIONS:

Call for Officer and Board of Directors Nominations

Elections of MAA officers and Board of Directors for next year's term (June 1, 2014 - May 31, 2015) will be held in April of this year. Now is the time to get our slate together. Below you'll find descriptions to help you understand the roles and responsibilities of each position. Nominations are due to Michael Shibley (mfs-art@comcast.net) by Thursday, March 20.

Consider joining the leadership team! Don't be shy and feel free to nominate yourself. Take this opportunity to think about how your ideas and efforts can contribute. Make something happen to the benefit of MAA, yourself, and other members.

Even if you are not ready to stand for election, there are opportunities for additional participation and help involving Programs, Shows, or within the various committee areas—Activities, Membership, Newsletter, Hospitality, Publicity, Technology, Gallery, and Community Outreach. You will be welcome however you would like to participate!

Over the last few years, MAA has grown its membership and improved its member benefits in many ways:

- The opportunity to show and sell work has never been stronger with the large Labor Day Show, the Gallery, the members' Friendship Heights show, and the shows at Amici Mieì restaurant, Daily Dish and the Kensington town offices. These are standard annual and ongoing exhibits, not to mention other periodic venues like Brookside Gardens, Artistic Gallery, etc.
- Besides these show opportunities, you can also display your work on the website in the Members' Gallery.

- Opportunities to meet with and learn from other members have also grown with our monthly programs, the museum trips, the holiday party, the social get-togethers in February and July, and our newsletter, Facebook page, and website.
- We are also growing our community outreach and support through our scholarship program, special college student membership category, provision of children's art activities, and participation in community festivals such as the Kensington Day of the Book and the Taste of Wheaton.

Bottom line—a lot is happening. The fact that many of these benefits are available is due to the ideas and efforts of the current leaders of MAA—the officers and directors of the Board and others assisting them in various capacities. There is always room to make MAA even better. The only limitations are more ideas and available "hands." That's you. The member.

So what do you want to do to help?

If you have any questions or ideas about how you might want to assist, please let Michael Shibley (mfs-art@comcast.net) know. And give him your nominations no later than Thursday, March 20!

MAA Officer and Elective Roles

Following the MAA Articles of Incorporation and Bylaws, the affairs of MAA are conducted under the direction of the Board of Directors—those elected and those appointed to perform the necessary activities of MAA. The Board normally meets one to two times per year, but may meet additional times if called by the president. Between formal meetings, information exchange and necessary business decisions are handled via email. All efforts are made to minimize "bureaucracy" while ensuring officers are able to conduct their roles appropriately and efficiently without a lot of in-person meetings.

In addition, after the election, the Board may appoint additional Board members so speak up if you're ready to help in some way!

President:

The president is the chief executive officer of MAA, presides over all meetings of MAA and its Board, and is responsible for carrying out the programs and policies established by the MAA Board and the MAA membership.

First Vice President (Programs):

The first vice president is responsible for the regular monthly programs (normally October through May) with the exception of the annual Winter Get-Together (February) and the December holiday party (handled

SEE PAGE EIGHT

MAA ELECTIONS

FROM PAGE SEVEN

by the Activities Committee). If necessary, the first vice president will also temporarily assume the role of President until another can be elected if a permanent vacancy occurs.

Second Vice President (Shows):

The second vice president is responsible for the administration, conduct and overseeing of all MAA shows. The second vice president is assisted in this responsibility by show chairpersons and other members. In particular, the Special Shows Coordinator, responsible for finding and administering MAA smaller show venues is part of the Second Vice President's organizational team and also stands for election.

Treasurer:

The treasurer maintains the financial accounts of MAA, deposits all monies promptly, disburses funds as appropriate and authorized, prepares and submits tax returns, and produces periodic financial statements for review by the Board.

Secretary:

The secretary prepares minutes of Board meetings and maintains a record of Board decisions made at Board meetings or through other methods, such as email. Minutes shall be kept in such a way that historical records of Board meetings are maintained.

Member Activities Committee Chairperson & Staff:

This committee plans and arranges for any workshops, museum trips and other art-related or social activities desired by the membership.

Hospitality Committee Chairperson & Staff:

This committee ensures that basic reception supplies are available for all MAA show and gallery receptions. Usually, reception refreshments are provided by members, but on occasion, the hospitality committee may provide specific items as requested. All costs borne by the Hospitality Committee are covered by MAA.

Membership Committee Chairperson & Staff:

This committee receives all dues, promptly transmits them to the Treasurer, and keeps an up-to-date list of members. The membership committee may also conduct membership campaigns and otherwise solicit new and renewed members.

Newsletter Editors & Staff:

This committee is responsible for gathering, publishing and emailing the MAA newsletter. Currently, this committee is supported by a Newsletter Editor, a Graphics Designer, and a Newsletter Reporter, all currently elective Board offices.

Publicity Committee:

This committee is responsible for notifying MAA clients, newspapers, magazines, radio and other media of MAA shows and receptions and also provides posters, signs, or other material to publicize these activities.

Gallery Committee:

This committee is responsible for the management and operation of the MAA Gallery (both store and/or online).

Community Outreach Committee:

This committee is responsible for identifying and orchestrating community outreach opportunities to benefit MAA and the community. Examples of activities are art-related community efforts, interactions with schools and universities, local festivals, local art events, and children's art activities. This group also oversees the MAA scholarship program.

Technology Committee:

This committee is responsible for the selection and management of the technology and technology-related services used for organizational and financial management, outreach/marketing (website, Facebook), gallery operations, meetings, etc.

Please review these roles and submit nominations for 2014-2015 to Michael Shibley (mfs-art@comcast.net) no later than Thursday, March 20. Thank you.

Winter Get-Together A Success

Although we had to postpone the Get-Together from its original February 12 date due to snow, we had a sizable turnout at this season's Winter Get-Together. Not only did we have good munchies and drinks, we also held our annual Valentine contest and drew names for Gallery Featured Artists for the next six months.

For the valentine contest, we had eight great entries. We want to thank everyone who prepared a valentine. They were all compelling, and the vote by attendees was very close.

Two people tied for first—**Sandra Levine** and **Vicky Surles**—and the third place winner was **Nar Steel**. All the winners received Plaza Art Gift Certificates. Congratulations to the winners!

We also did the drawing for the Gallery Featured Artist for the next six shows—April through September. Once those selected confirm that they are willing to be the Featured Artist for their selected months, we will be announcing their names.



Co-First Place winners Vicky Surles (left) and Sandra Levine



(Left to right) April Rimpo, Deborah Miller, and Janet Fox



(Left to right) Alan Hirsh, Sandra Levine and Ronda Morris

REMEMBER
THESE:

UPCOMING dates

March 12:

Monthly Meeting, Plaza Art Rockville, 6:30-8:30. Social period begins at 6:30 pm and program begins at 7:00 pm. Our guest speaker will be February's Featured Artist, Ann Gordon, who will make a presentation about framing your artwork.

March 20:

Deadline for Newsletter Input

April:

Kensington Library Show. Online Registration Deadline: 3/21, midnight; Show Hanging: Saturday, 4/5, Show End, Saturday, May 3. Room for 3 artists. Show posted for registration in March.

April:

Spring Amici Miei Restaurant Show. Online Registration Deadline: 3/21, midnight; Show Hanging: Sunday, 4/13, 3 pm; Reception: Sunday, 4/27, 3 pm; Mid-Show Switch, Sunday 5/18, 3 pm; Show End, Sunday, 6/29. Room for 5 artists. Show posted for registration in March.

April 9:

Monthly Meeting, Plaza Art Rockville, 6:30-8:30. Social period begins at 6:30 pm and program begins at 7:00 pm. Our guest speaker will be Linda Hendrickson who will give a demo on "Pet Portraits".

April 27:

Kensington Day of the Book Festival. Sales for MAA artists who setup/staff table

May 14:

Monthly Meeting, Plaza Art Rockville, 6:30-8:30. Social period begins at 6:30 pm and program begins at 7:00 pm. Last meeting before October. Our guest speaker will be Deborah Maklowski who will provide a demo on Mixed Media Techniques.

June:

Show in WSSC Lobby (20-40 pieces). Dates to be determined.

June:

Annual Show at the Friendship Heights Village Center. Online Registration Deadline: 5/23, midnight; Dropoff: 6/1, 10:30 am; Show Judging and Hanging: Sunday, 6/1, 11 am; Reception: Sunday, 6/8, 11:30 am – 1:30 pm; Show End and Pickup, Sunday, 6/29, 10:30 am.

June:

Summer Amici Miei Restaurant Show. Online Registration Deadline: 6/20, midnight; Show Hanging: Sunday, 6/29, 3 pm; Reception: Sunday, 7/6, 3 pm; Mid-Show Switch, Sunday 8/3, 3 pm; Show End, Sunday, 9/7



MAA GALLERY SHOWS AND DATES

The Gallery is open 7 days/per week—Monday through Saturday, 11am to 8 pm and Sunday, 11 am to 7 pm. To show in the Gallery, you need to be a current MAA member and must "Gallery-sit" at least two shifts (8-10 hours). If, in addition to "wall" pieces, you would like to display bin works and cards, there is an additional \$25 annual fee from the current date to September 30, 2014. There is a \$10 monthly participation fee to display any work in the Gallery for sale. For works sold, MAA takes its standard 25% commission. If you've not previously shown in the Gallery, you must take a Gallery training class. If you are interested, please review the FAQ: MAA Gallery piece on the website Resources page and contact Cathy Hirsh at hirshcathy@gmail.com.

Mar: Featured Artist: Judith Levine

Information about pieces (title, media, price) registered online by Friday, 2/28
Drop-off (or pickup for the previous show)—Sunday

SEE PAGE ELEVEN

REMEMBER
THESE:

UPCOMING dates

FROM PAGE TEN

3/2 5-7 pm or Monday 3/3, 10-noon
Show hanging – Monday 3/3 afternoon.
Show opening reception– Sunday 3/9, 1-5 pm
First day of show—Tues, 3/4; Last day of show—
Sunday, 3/30

April: Featured Artist: TBD

Information about pieces (title, media, price) registered online by Friday, 3/21
Drop-off (or pickup for the previous show)—Sunday 3/30 5-7 pm or Monday 3/31, 10-noon
Show hanging – Monday 3/31 afternoon.
Show opening reception– Sunday 4/6, 1-5 pm
First day of show—Tues, 4/1; Last day of show—
Sunday, 4/27

May: Featured Artist: TBD

Information about pieces (title, media, price) registered online by Friday, 4/25
Drop-off (or pickup for the previous show)—Sunday 4/27 5-7 pm or Monday 4/28, 10-noon
Show hanging – Monday 4/29 afternoon.
Show opening reception– Sunday 5/4, 1-5 pm
First day of show—Tues, 4/30; Last day of show—
Monday, 5/26

June: Featured Artist: TBD

Information about pieces (title, media, price) registered online by Friday, 5/23
Drop-off (or pickup for the previous show)—Monday 5/26 5-7 pm or Tuesday 5/27, 10-noon
Show hanging – Tuesday 5/27 afternoon.
Show opening reception– Sunday 6/1, 1-5 pm
First day of show—Wed, 5/28; Last day of show—
Sunday, 6/29

July: Featured Artist: TBD

Information about pieces (title, media, price) registered online by Friday, 6/27
Drop-off (or pickup for the previous show)—Sunday 6/29 5-7 pm or Monday 6/30, 10-noon
Show hanging – Monday 6/30 afternoon.
Show opening reception– Sunday 7/6, 1-5 pm
First day of show—Tues, 7/1; Last day of show—
Sunday, 7/27

August: Featured Artist: TBD

Information about pieces (title, media, price) registered online by Friday, 7/25
Drop-off (or pickup for the previous show)—Sunday 7/27 5-7 pm or Monday 7/28, 10-noon
Show hanging – Monday 7/28 afternoon.
Show opening reception– Sunday 8/3, 1-5 pm
First day of show—Tues, 7/29; Last day of show—
Sunday, 8/24

September: Featured Artist: TBD

Information about pieces (title, media, price) registered online by Friday, 8/22
Drop-off (or pickup for the previous show)—Sunday 8/24 5-7 pm or Monday 8/25, 10-noon

Show hanging – Monday 8/25 afternoon.
Show opening reception– Sunday 9/7, 1-5 pm
First day of show—Tues, 8/26; Last day of show—
Sunday, 9/28

October: Featured Artist: TBD

Information about pieces (title, media, price) registered online by Friday, 9/26
Drop-off (or pickup for the previous show)—Sunday 9/28 5-7 pm or Monday 9/29, 10-noon
Show hanging – Monday 9/29 afternoon.
Show opening reception– Sunday 10/5, 1-5 pm
First day of show—Tues, 10/1; Last day of show—
Sunday, 11/2

November: Featured Artist: TBD

Information about pieces (title, media, price) registered online by Friday, 10/31
Drop-off (or pickup for the previous show)—Sunday 11/2 5-7 pm or Monday 11/3, 10-noon
Show hanging – Monday 11/3 afternoon.
Show opening reception– Sunday 11/9, 1-5 pm
First day of show—Tues, 11/4; Last day of show—
Sunday, 11/30

December: Featured Artist: TBD

Information about pieces (title, media, price) registered online by Friday, 11/28
Drop-off (or pickup for the previous show)—Sunday 11/30 5-7 pm or Monday 12/1, 10-noon
Show hanging – Monday 12/1 afternoon.
Show opening reception– Sunday 12/7, 1-5 pm
First day of show—Tues, 12/2; Last day of show—
Sunday, 1/4



MAA artists display at Amici Mei

Member Events

The Montgomery County Plein Air Artists (MCPAA) Juried Exhibition will be held March 6, 2014 - April 27, 2014 at the Hill Center in the Old Naval Hospital located at 921 Pennsylvania Ave SE, Washington, DC 20003 in Washington, DC. This show contains a number of MAA members. The following is a complete list of participants: **Shirley Barnhart, Sara Becker, Mimi Betz, Gillian Collins, Catherine Fleming, Maritsa George, John Hastie, Tara Holl, Robinwyn Lewis, Barry Lindley, Barbara Mandel, Evelyn McKay, Marilyn Mess, Debbie Miller, JoEllen Murphy, Hang Nguyen, Jeanne Powell, Marie Riccio, Marylouise Roach, Peter Roman, Gonzalo Ruiz Navarro, Don Srull, and Patricia Tice.** A reception will be held on March 19, 2014 between 6:00 and 8:00 PM at the Hill Center. Please take this opportunity to see a wonderful collection of plein air art.

The Pâté Painters, whose membership includes MAA members **Debbie Halprin, Julie Smith, Pat Mulvenna, Barrie Ripin, Marian MacKerer, Pat Choquette, Donna Golden, Juliya Ivanilova, Jeanne Sullivan, Janet Schroeder** and **Michael Shibley**, continue their show at the Arts Barn in Gaithersburg through March 23.

Juliya Ivanilova will also be showing her work in a group show at Gallery B in Bethesda through March 2. She will also have fifteen of her works on display at the Arts Barn

beginning March 24. There will be a reception at the Arts Barn on Tuesday, April 15 from 7-8:30 PM.

Natalie Falk will also have fifteen of her works on display at the Arts Barn in Gaithersburg beginning March 24. There will be a reception at the Arts Barn on Tuesday, April 15 from 7-8:30 PM.

The Amici Mei show continues with MAA artists: **Sandra Perez-Ramos, Galina Kolosovskaya, Barbara Mertens** and **Michelle D. Morgan** through April 13. If you are interested in this venue, see the Upcoming Dates section for application to the next show.

MAA members **April Rimpo, Barrie Ripin, Carol Leo** and **Joseph Jones** were juried into the 45th Annual Laurel Art Guild Open Juried Exhibition. The exhibition runs from March 2 - March 30, 2014 at the Montpelier Arts Center, 9652 Muirkirk Road Laurel, MD 20708. There will be a reception and awards ceremony on Sunday, March 9 from 2-4 PM.

MAA member **April Rimpo** will have her work on display at the Maryland Federation of Art's "Art on Paper" at the Circle Gallery in Annapolis from March 20-April 19. She will also be participating at the Howard County Celebration of the Arts Art Auction on March 24 from 6-10 PM.

Art News

Woman's Club of Potomac Art Show – Open Call Announcement:

The Woman's Club of Potomac Art Show and Sale invites all metropolitan visual artists, age 18 and over to participate in their show held on Saturday and Sunday, June 7- 8, 2014 at the Potomac United Methodist Church, Parish Hall. The show will be a dynamic collection of multi- media works and photography. The exhibition will contain approximately 250+ entries. Registrations will be accepted from March 1 to May 2. This exciting community event will involve multiple area businesses for added promotion, with many gift item door prize opportunities for the public.

The WCP Art Show is held for the benefit of the Woman's Club Benevolent Fund in support of local charities. No commission is taken. The artwork will be juried for prize awards by Glen Kessler. Glen is an internationally collected artist and instructor at the Capitol Arts Network, and the Yellow Barn at Glen Echo Park. A registration form will be made available via the MAA website in the very near future. Watch for the announcement in your email. For questions contact, Pat Choquette - Curator: Custom_Interiors@ChoquetteInteriorDesign.com.

Camp Hill PA On Canvas Plein Air Event

This juried competition is a project of the Camp Hill Economic and Cultural Development Group and culminates with an awards presentation and multi-day exhibition and sale and other Galleries located in the Market Street Area of Camp Hill, PA. The first prize will be \$2,000. This plein air event will run from May 16-May 18, 2014. There will also be a quick draw completion. Interested artists should call 717-909-4332 for more information or visit www.pleinaircamphill.org.



GALLERY NEWS AND NOTES

This part of the newsletter is designed to provide you with art news and information about interesting shows at the many local art galleries. If you are aware of an event, news or an exhibit, large or small, that you think would be of interest, please send an email to JULevineRN@aol.com. If going to one of the galleries you have not been to we urge that you contact the gallery or its web site to ask about directions and transportation. Many of the galleries in DC are accessible via Metro and parking can be a problem. Unless otherwise noted, admission is free.

The Corcoran Gallery of Art

510 17th St NW, Washington, DC (202) 639-8574

Jennifer Steinkamp and Jimmy Johnson: Loop

March 15, 2014–April 20, 2014

Sol LeWitt: Wall Drawing #65

March 22, 2014–March 15, 2015

Rineke Dijkstra: The Crazyhouse

March 29, 2014–June 15, 2014

All three of these pieces are site specific installations. Dijkstra's work is one that will be completed during its time at the gallery.

American Journeys – Visions of Place

September 21, 2013–September 21, 2014

The Corcoran has chosen to rehang 110 of its pre-1945 collection. The exhibition will be divided into 4 areas, *Pride of Place: The New Nation,* "The

Lure of Paris," "New York in the New Century," and "Beyond Borders: Modernism". The gallery is also preparing to become the extension of the National Gallery's East Wing as that institution prepares to close for a three year renovation.

Alex Prager: Face in the Crowd

November 23, 2013–March 9, 2014

The Phillips Collection

1600 21st St., NW, Washington, DC 20009 Information- 202-387-2151 \$12 -adults, \$10 -62 and over and students, free for members and visitors 18 and under

Made in the USA American Masters from The Phillips Collection,

1850–1970
March 1, 2014 - August 31, 2014

Young Artists Exhibition

February 18, 2014 - March 24, 2014
The paintings in this show were all made by students

in the Corcoran's art programs. The artists are four to eighteen years old. As with the show we recently did in the MAA Gallery, it gives the viewer a chance to see the world through the eyes of the next generation of artists.

Intersections

Intersections, a series of projects explores the way two, sometimes radically, different objects relate and join together. Each project explores new traditions, modern and contemporary art practices, and museum spaces and artistic interventions. It branches into both traditional and non-tradition exhibition spaces with some surprising and intriguing results.

Intersections: Jean Meisel 50–65 Horizon Line

January 23, 2014 - May 4, 2014
Meisel is a contemporary painter who works in both abstract and semi-representational styles. Her land and seascapes are

stripped to the barest figures possible and yet still convey her subject's meaning. Though her colours are muted often, she conveys enormous power in her work.

The National Gallery of Art

4th and Constitution Avenue NW, Washington, DC 20565 General Information: (202) 737-4215 (Unless otherwise noted all exhibits are in the West Wing; the East Wing is currently closed for renovations.)

Modern German Prints and Drawings from the Kainen Collection

February 23, 2014 – June 29, 2014

Ruth Kainen left the gallery a bequest from which most of these 123 works are drawn. Included are watercolors, drawings, etchings, woodcuts, lithographs, and illustrated books by Nolde, Heckel, Schmidt-Rottluff, and Ernst Kirchner. The show covers

precursors and successors to the expressionists, such as Kolbe, Klinger, and Ludwig Meidner, plus the renown Egon Schiele.

Garry Winogrand

March 2, 2014 – June 8, 2014

Winogrand (1928–1984) focused his camera on New York City where he grew up, and then on American life in general. Many of the photos in this 180 piece show have never been exhibited before. His work is intimate, and looks to everyday things and acts, rather than celebrities.

From the Library: Grega and Leo A. Daly III Fund for Architectural Books

February 15, 2014 – August 17, 2014

City Planning and Improvements, Studying the Masters, Purpose Built, Architectural Details-this exhibit allows the visitor to explore the who, what, where, when and what of public buildings. It al-

SEE PAGE FOURTEEN

GALLERY NEWS AND NOTES

FROM PAGE THIRTEEN

lows the visitor to better understand how a building came about, what drove the architect, even how its' very right to be was marketed.

The Dying Gaul: An Ancient Roman Masterpiece from the Capitoline Museum, Rome

December 12, 2013 – March 16, 2014

This masterpiece of sculpture has never been seen outside of Italy since 1816. Originally believed to be Roman soldier, it is now accepted that it is actually a Gallic (French) warrior. From personal experience I can say that the exquisite details of this figure are

rarely captured in photographs.

Hirshhorn Museum and Sculpture Garden

Independence Avenue at Seventh Street SW Information: 202-633-1000 or 202-633-5285 (TTY) This gallery focuses on contemporary artists.

Gravity's Edge

February 7, 2014- June 15, 2014

Look at how gravity and the use of the very hard edge began to change how artists created work starting in 1959. It will allow the viewer to explore both Modernist narrative of Color Field works by

Frankenthaler, Louis, Noland, Paul Jenkins, and Sam Francis alongside contemporary sculptures by Lynda Benglis and Anne

Truitt. The attendee is able to see how Washington's own Colour School came into existence.

Black Box Series: Santiago Sierra and Jorge Galindo

February 14, 2014- May 18, 2014

Directions Series: Damage Control: Art and Destruction Since 1950

October 24, 2013 to May 26, 2014

The Sackler Gallery/ The Freer Gallery

1050 Independence Avenue, SW. 202-633.1000 The joint galleries house one of the world's great collection of Asian arts.

Chigusa and the Art of Tea

February 27, 2014-July 27, 2014

Chinese Ceramics for Tea in Japan

March 1-September 14, 2014—Sackler The perfect chance to

understand the place of tea and the meaning of the tea ceremony will be found in these two exhibitions. Chigusa 's focus is on the ceremony within Japan and the Chinese Ceramics looks at how China provided exquisite pots and other items needed in this very special part of Japanese culture.

Bountiful Waters: Aquatic Life in Japanese Art

March 1-September 14, 2014-Freer

In Focus: Ara Güler's Anatolia

December 14, 2013-May 4, 2014-Sackler 85 year old Güler shot these medieval Seljuk and Armenian buildings in the early 1960s and printed in 1965. Considered one of Europe's most celebrated landscapes photographer's, this show gives the viewer a chance to experience some of Turkey's oldest buildings.

The Nile and Ancient Egypt

December 7, 2013- indefinitely -Freer This is a chance to see the Nile as it was observed through the eyes of ancient artists and craftsmen. The Nile was, and is, a spiritual as well as a physical thing to Egyptians. Its very existence is tied to that of the country and its wellbeing.

Off the Beaten Path: Early Works by James McNeill Whistler

September 28, 2013-September 28, 2014 Freer

Sylvan Sounds: Freer, Dewing, and Japan

May 18, 2013-May 18, 2014- Freer "This intimate exhibition illuminates this connection by juxtaposing landscapes by American artist Thomas Dewing (1851-1938) with Japanese works that Freer acquired in the late 1890s, just after his first tour of Asia. Freer's idealized no-

SEE PAGE FIFTEEN



The Dying Gaul

GALLERY NEWS AND NOTES

FROM PAGE FOURTEEN

tions of “old Japan” paralleled the nostalgic, pastoral aestheticism of Dewing’s atmospheric landscapes.” - Freer Gallery Catalogue

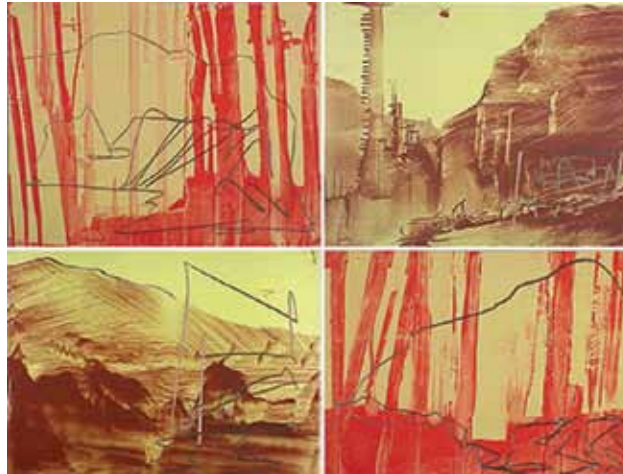
National Museum of the American Indian

Fourth Street & Independence Ave, S.W. Washington, DC 20560 202-633-1000

Making Marks: Prints from Crow’s Shadow Press

January 17, 2014–May 26, 2014

These eighteen works by seven contemporary Native American artists highlight the mission of Crow’s Shadow Institute of the Arts. They demonstrate the talents of a remarkable group of artists who work in both traditional and contemporary styles to introduce you to views of the world around them. A small show with a huge impact.



James Lavadour, Ghost Camp, 2002. Lithograph on paper. Photo courtesy of Crow’s Shadow Institute of the Arts. National Museum of the American Indian

National Museum of African Art

950 Independence Avenue, SW Washington, DC (202) 633-1000

African Mosaic: Celebrating a Decade of Collecting

Ongoing

The centerpiece of this exhibition is the sculpture of Haitian leader Toussaint Louverture by Senegalese sculptor Ousmane Sow. The curator states that he wants the viewers to challenge themselves, to ask what, why and how

each of these pieces was created physically as well as the overall meaning of each work.

Renwick Gallery

1661 Pennsylvania Ave NW, Washington, DC (202) 633-7970
The Renwick’s main focus is on the decorative arts.

National Portrait Gallery/Smithsonian American Art Museum

8th St. at F St., NW, Washington, DC 202) 633-1000 (voice/tape) The National Portrait Gallery (NPG) and

the Smithsonian American Art Museum (SAAM) both contain many permanent exhibits that easily allow for many visits. These two connected galleries, which are part of the Smithsonian Institute, form a national treasure of American paintings and sculpture. The buildings just reopened recently after a nearly 6 year renovation which has restored them to their original states. This included restoration of the exquisite stained glass windows in both ceilings and walls, and the repair of the beautiful floor and wall tiling.

Modern American Realism: The Sara Roby Foundation Collection

February 28, 2014 – August 17, 2014
Paul Cadmus, Edward Hopper, and Jacob Lawrence are but a few of the artists represented in this collection that spans 1910 to 1989. While technically the works encompass an

American view of realism, many stray so far from the path that one of the curators said he struggled with this definition. MAA members might enjoy William Kloss’ lecture on March 7 at 6:00 PM at the gallery, when he explores just what this means in a lecture entitled Roby Realism

American Cool

February 7, 2014 -September 7, 2014
Fine-art photographers from Henri Cartier-Bresson to Annie Leibovitz, from Richard Avedon to Herman Leonard to Diane Arbus define the word “cool”. ‘Nuff said.

One Life: Martin Luther King, Jr

June 28, 2013 -June 1, 2014
In just one room you will have the opportunity to revisit one of our county’s most important eras. For those too young to have been there, you will get

SEE PAGE SIXTEEN

GALLERY NEWS AND NOTES

FROM PAGE FIFTEEN

the chance to see what it was like for those of us who actually lived it and heard one of the people whose voice changed the face of America.

Dancing the Dream

October 4, 2013 -July 13, 2014

Spanning nearly a hundred years, the images in this show look at dancers from Isadora Duncan to Lady Gaga. Its purpose is to explore the relationship between dance and the world around it. It will give patrons a chance to explore this most ephemeral of art forms.

Landscapes in

Passing:Photographs by Steve Fitch, Robbert Flick and Elaine Mayes

July 26, 2013-January 20, 2014-American Art Museum

These three photographers have chosen to explore the effect of urban and suburban sprawl on the formerly pristine landscape. On September 12, 2013 the

three photographers will be present for a panel discussion.

Outwin Boochever Portrait Competition 2013

March 23, 2013 through February 23, 2014-Portrait Gallery

National Museum of Women in the Arts

1250 New York Avenue, N.W., Washington, DC 20005-3970 202-783-5000, 1-800-222-7270

Judy Chicago: Circa '75

January 17, 2014-April 13, 2014

"Workt by Hand": Hidden Labor and Historical Quilts

December 20, 2013-April

27, 2014

The quilt began as a way to keep warm but it has become a way to share the maker's hopes and dreams. Through its panels the history of country can be read. Once just a piece of craft work, the quilt has become a legitimate art form in the hands of those who mastered its technique.

Equal Exposure: Anita Steckel's Fight Against Censorship

November 4, 2013-May 9, 2014

OTHER SHOWS and GALLERIES

Walters Gallery

600 North Charles Street

Baltimore MD (410) 547-9000 Wednesday through Sunday, 10 A.M. — 5 P.M.

Designed for Flowers: Contemporary Japanese Ceramics

February 23, 2014- May 11, 2014

Ikebana, the art of flower arranging, is a major cultural achievement in Japan. The container is as important as the flowers. With the Cherry Blossom Festival only two months away, this is a good time to explore this art.

Jacob Lawrence 's Genesis Series

September 14, 2013- April 13, 2014

Lawrence is an American painter (1917 -2000) depicted in vibrant colour, the world around him, the struggles and

victories of his fellow human beings. This particular series lets the viewer into the world of the book of Genesis as Lawrence experienced it growing up in his own church in Harlem.

Book Bindings from the Gilded Age

October 26, 2013-May 18, 2014

Both of these exhibits continue the Walters examination of the links between book and artwork. The Book of Faiyum is on papyrus and dates from Greco-Roman Egypt. In Book Bindings you can explore the renewed flowering of bookbinding during the late 19th and early 20th century where once again the divide between craft and art is blurred.

Goldman Art Gallery

The Jewish Community Center of Greater Washington
6125 Montrose Road, Rockville, MD 20852

SEE PAGE SEVENTEEN



From "American Cool"

GALLERY NEWS AND NOTES

FROM PAGE SIXTEEN

301-881-0100
Monday, Wednesday,
Friday-9 a.m. – 5 p.m.
Tuesday,Thursday- 9 a.m. – 7
p.m. Sunday 10 a.m.-2 p.m

The Individual and The Group:Encaustic Paintings by Rinat Goren

February 9, 2014 - March
19, 2014

BlackRock Center for the Arts

12901 Town Commons
Drive, Germantown, MD
20874 301.528.2260
(administrative offices)

Tribute to Fiber Art

March 5, 2014 – March 28,
2014 Reception: March 8,

Roses, Green and Gold, by MAA member Natalie Falk is part of the 23rd Annual Strathmore Artists Exhibit



2014, 5:30PM -7:30 PM

The Mansion at Strathmore

10701 Rockville Pike North
Bethesda MD 20852

For more information call
(301) 581-5125. Free and
Open to the Public

The 23rd Annual Strathmore Artists Juried Exhibition

March 8, 2014 - April
6, 2014 Free Opening
Reception: March 9, 2014,
2:00 PM – 4:00 PM

Hill Center Galleries

Hill Center at the Old Naval
Hospital, 921 Pennsylvania
Avenue, SE, Washington,
DC 20003, (202) 549-4172
[http://hillcenterdc.org/
home/galleries](http://hillcenterdc.org/home/galleries)

Montgomery County Plein Air Artists Juried Exhibition

March 6, 2014 - April
27,2014 , Hill Center at the
Old Naval Hospital, Wash-
ington, DC.
Reception -March 19, 2014
between 6:00 PM and

8:00 PM
This show could be called
MAA in Miniature! It
features Shirley Barnhart,
Sara Becker, Mimi Betz,
Gillian Collins, Catherine
Fleming, Maritsa George,
John Hastie, Tara Holl,
Robinwyn Lewis, Barry
Lindley, Barbara Mandel,
Evelyn McKay, Marilyn
Mess, Debbie Miller, JoEllen
Murphy, Hang Nguyen,
Jeanne Powell, Marie
Ricchio , Marylouise Roach,
Peter Roman, Gonzalo Ruiz
Navarro, Don Srull, and
Patricia Tice. Please go
see a grand assortment of
wonderful paintings and
support our members.

Adah Rose Gallery

3766 Howard Ave Kens-
ington, Maryland 20895
(301) 922-0162 email-
adahrosegallery@gmail.
com

“The deepest feeling always shows itself in silence”

Pat Goslee and Jessica Van
Brakle
February 13, 2014- March
23, 2014 Opening

Vernissage Feb 22, 2014
6:30PM-8:30 PM

Hillyer Art Space Exhibitions

9 Hillyer Ct. NW, Washing-
ton, D.C. 20008
Mon 12-5 , Tues-Fri 12-6,
Sat 12-5 ,and by
appointment; 202-338-
0680; [gallery@artsand-
artists.org](mailto:gallery@artsand-artists.org)

Millicent Young, Katrina
Keane, and Becca Kallem,
all from Virginia, are the
artists of note at Hillyer
this month.

The Artists' Gallery

4 East Church Street,
Frederick, MD 21701
301-696-8187 [www.the-
artists-gallery.org](http://www.the-artists-gallery.org) Fri-Sun
12-5, or by appointment.

“For Art’s Sake” 2014 Patron Show

February 28, 2014- March
23, 2014 Reception -
March 1, 2014 from 5:00
PM to 9:00 PM.
All of the gallery’s mem-
bers will have works in
this special show. While

the show is free it is also a
fund raiser and those who
wish to participate in the
lottery can buy tickets, as
well as view the paint-
ings at [www.tinyurl.com/
kw5uqz9](http://www.tinyurl.com/kw5uqz9).

VisArts at Rockville

155 Gibbs Street, Rock-
ville, MD 20850 (301)
315-8200

Craig Kraft: The Ground Zero Blues Club Series Abstraction: Finding The Thread

March 5, 2014-April 20,
2014

Xiaosheng Bi: Recent Work

March 26, 2014- April 20,
2014

The opening reception for
the paintings in the Kraft
and Abstraction shows is
March 7, 2014 between
7:00 PM and 9:00 PM. The
Xiaosheng pottery exhibi-
tion’s reception is March
28, 2014 from 7:00 PM to
9:00 PM

Ann Gordon Reception



Ann Gordon Artwork



Ann Gordon and Visitor

MAA Board for 2013-2014

President

Michael Shibley

301-807-6890
mfs-art@comcast.net

1st Vice President, Programs

Pauline Rakis

301-622-1748
prakis1040@aol.com

2nd Vice President, Shows

Elizabeth Stecher

301-593-8305
estecher7@verizon.net

Secretary

Marcia Bhorjee (Acting)

301-493-4665
mbhorjee@gmail.com

Treasurer

Barrie Ripin

301-346-6867
bripin@verizon.net

Associate Treasurer

Behrouz Sarabi

301-460-2586
Behrouz.sarabi@gmail.com

e-Newsletter Editor

Michael Shibley

301-807-6890
mfs-art@comcast.net

e-Newsletter Editor (design)

Natalie Falk

301-384-0417
nmfalk@comcast.net

e-Newsletter Reporter & Children's Activities Coordinator

Judith Levine

301-869-6811
julevinern@aol.com

Activities Committee Chair

Marcia Bhorjee

301-493-4665
mbhorjee@gmail.com

Hospitality Committee Chair

Roxanne Ando

301-622-9541
PNPPaintbrush@gmail.com

Membership Committee Chair

Sandra Cepaitis

301-564-0331
slcep@msn.com

Gallery Committee Chair Past President

Cathy Hirsh

301-622-0546
hirshcathy@gmail.com

Publicity Committee Chair

Vicky Surles

240-604-5377
vsurlesGraphics@comcast.net

Facebook Page Coordinators

Victoria Squire

202-352-6664
victoria_squire@yahoo.com

Janet Fox

301-326-4327
jfoxdreamart@aol.com

Special Shows Coordinator

Virginie Montet

202-285-2329
vmontet2002@yahoo.com

Technology Committee Chair

Joseph Jones

240-271-4641
waazaji@yahoo.com

Outreach Committee Chair Past President

Laura-Leigh Palmer

240-354-5454
Laura.leigh@asapgraphics.com

Supporting Staff

Accounting Advisor:

Sue Meyer

301-384-4777
susanmeyercpa@verizon.net

Web Content Manager

Past President

Cathy Hirsh

301-622-0546
hirshcathy@gmail.com

Technical Website Manager:

Heather Stobo

213-321-3919
hstobo@gmail.com