

# MAA NEWS

FEBRUARY 2015

## in this issue ...

- Galina Kolosovskaya, 1
- President's Message, 3
- MAA Meeting, 4
- Member Art News, 5
- MAA Officer Job Descriptions, 6
- Movie Review: Mr. Turner, 7
- Upcoming Dates, 8
- New Members, 10
- Art News & Gallery Notes, 10

## Featured Artist: Galina Kolosovskaya

*Text Derived From An Interview with Judith Levine*

We owe Russia a debt of thanks for our February Featured Artist Galina Kolosovskaya. Born in the Urals city of Chelyabinsk and brought up in the Russian Far East, she is a life-long artist. Kolosovskaya attended Khabarovsk Pedagogical University to receive a degree in Fine Art. During her student years, she travelled about in Russia including cities such as Moscow and St. Petersburg, allowing her to go frequently to the finest art museums such as the Tretyakov Gallery and the Pushkin Museum in Moscow and the Russian



*Hydrangeas, by Galina Kolosovskaya*

Museum and Hermitage in St. Petersburg. In these enormous collections, she could spend time observing and learning about composition, technique, and other parts of what make up a great painting. "I spent hours at the

Tretyakov Gallery contemplating great masterpieces by Russian artists such as Vasily Vereshchagin (1842-1904) and his *The Apotheosis of War* (1871), a painting depicting piled skulls and establishing Vereshchagin's views on



*Artist Galina Kolosovskaya*

war. Or *Christ in the Desert* by Ivan Kramskoi; or *Princess Tarakanoff* (1864) by Konstantin Flavitsky and of course... the Hermitage, a museum, where you could be overwhelmed with enormous collection of different kind of art and even a week wouldn't be enough to see everything."

"When people ask me who is my favorite artist I have a hard time answering. There are many. The whole pleiad of artists of all kind of styles and genres. When I was young

SEE PAGE TWO

# Kolosovskaya

FROM PAGE ONE

I loved Modigliani (still do) and made a lot of copies of his work. He is unique, he wasn't like anybody else," Kolosovskaya said.

And it was only as she got older that she began to appreciate the Dutch masters and its influence on some of her still life paintings. Her love of the Dutch still life painters is evident in the way the artist uses her images and colors. Look at the work of the best known Dutch still life artists of the period- Pieter Claesz, and Willem



*Poppies, by Galina Kolosovskaya*

Claesz Heda- and you will see the same clarity of images and purity of color. The greatest difference is not in technique but in the presentation of her subjects. Kolosovskaya focuses on the subject, birds or flowers, rather than including the background as of equal importance. They are not poorly done, just more a part of a good composition rather than part of the primary subject. This is, of course, her right to choose what matters most to her as the artist. Her technique fully supports her decision to make her works in this way.

In addition to her oil paintings, Kolosovskaya has invented a unique method of making compositions with feathers. Not quill painting but the inclusion of

the whole or parts of feathers. These gorgeous works are a feast for the eye. She carefully cuts the feathers as needed. Next she arranges them on the paper (sometimes using watercolor or air brush for background) to make fantastic images of flowers, butterflies and birds. If you check out her website, featherart.org, you can see her as she demonstrates the making of one of her feather art pictures. Kolosovskaya said, "I try to find harmony between the images and the colors and textures of the feathers. People tell me they feel very relaxed...calm [looking at my feather art]. Some of my students



*Still Life with Lemon, by Galina Kolosovskaya*

tell me the same, so I consider my feather art as therapeutic."

After completing her studies at university, she had several positions including that of teacher, window display manager, and for the last ten years of her life in Russia, art director for the Wildlife Foundation. The Foundation is the premier environmental organization working for the survival of the Siberian tiger and conservation of Russian flora and fauna. The time she spent with the Wildlife Foundation cemented her love of



*Take-off, by Galina Kolosovskaya*

wildlife- birds in particular and that she derives the most pleasure in depicting. During this time she married an American, and in 2003 moved to the United States, and now lives in Silver Spring. Kolosovskaya's work has been shown at numerous exhibits, and is now in private collections in Russia, Japan, France, Germany, Canada and the USA. She joined MAA a year ago.

"In my art, I try to do what I like. Occasionally, I do landscapes and some portraits. I just did one of my granddaughter. And I work not only in classic manner, I love to work in "impasto"

technique with the pallet knife."

She and her husband will probably stay in this area for the foreseeable future. She does return to Russia yearly and they enjoy traveling both in the States and abroad. I think this will be a most enjoyable show so please join MAA as we showcase the works of Galina Kolosovskaya. Galina's work will be on display in the Gallery beginning Tuesday, February 3 and running through Sunday, March 1. There will be a Meet the Artist reception on Sunday, February 8 from 1:00 – 5:00 PM.

# President's Message

**W**hen you receive your monthly MAA

Newsletter, do you ever wonder how the current President comes up with the topics or decides what to say? Well, so do !!! It's a challenge each month to provide you with valuable information that you can use in your artistic endeavors.

This month, however, and in upcoming months, my primary message to all of you will be easy. That message is—get involved with your art association in 2015—by stepping up and putting your name forward to serve on the MAA Board. I don't like to lecture people, but it's important to remind everyone that the events, activities, and opportunities that MAA provides to you don't happen by accident.

They happen because members like you have seen the value of volunteer participation and have given of their valuable time to make MAA what it is. Let's keep our momentum going.

In the coming months, as we get closer to the spring elections, we will be featuring descriptions and responsibilities of the various Board positions. So when it comes time to put your name on the ballot, you will be well-informed about the positions and what is required to fulfill the obligations of each. I am very pleased to tell you that some of our current Board members have already indicated their desire to continue to offer their services on your behalf and will put their names forward for re-election. To them I say a heart-felt thank you!!

In past issues, I have

pointed out the contributions of various Board members in their respective areas. At the risk of repeating and in the context of this message, I think it's appropriate to mention two of them again. Why? Because I think it shows how one person can make a big difference for a lot of members.

The first individual is **Janet Fox**. Janet is our Social Media Chair. She has worked tirelessly over the last several months to resuscitate our outreach in the Social Media including our Facebook Page, Twitter, Pinterest and other social media outlets. If you have not been to the MAA Facebook page recently, you should take a moment and look at the wonderful content Janet has provided for you. Our page sat dormant for a couple of years before Janet agreed to put her name in

nomination for the Social Media Chair. She has taken that responsibility quite seriously and I think a visit to the MAA Facebook page will convince you of that. The bottom line is that the more we reach out to the public, the better we are able to fulfill our Association's mission to the members and the public. Thanks to Janet without whose individual efforts we would still be struggling with our outreach.

The second is **Virginia Montet**. Virginia is our Special Shows Coordinator. What that means is that she organizes and manages the show opportunities you have available from MAA. That includes our regular shows at Amici Miei, WSSC, and others. Virginia oversees the setup and take down for each event is always on the lookout for new venues. When Virginia was first

elected to this position she was excited by what the program could be if we just devoted more time to it. The results speak for themselves. Her energy and enthusiasm for making this program work for you is wonderful. Thanks to Virginia for her hard work and dedication.

Please note that identifying and focusing on these two individuals does not diminish the contributions of other Board Members. They each do their jobs to make sure that you continue to receive the services you expect from MAA. I will recognize each of them individually in the coming months. The accomplishments of Janet and Virginia just serve to show how one person's dedication can make a huge impact. Perhaps you will be inspired by their commitment to our art

**SEE PAGE FOUR**

## President's Message

FROM PAGE THREE

association—MAA. More on this next month.

Of a more immediate nature, our Featured Artist this month at the MAA Gallery is **Galina Kolosavskaya**. Galina is a regular participant in the Gallery and has selected some very interesting pieces for her display. Galina's show begins on Tuesday, February 3 and runs through Sunday, March 1. There will be a Meet the Artist reception on Sunday, February 8 from 1:00 – 5:00 PM. After reading her interview in this issue you will want to drop by to see her work in person. As part of the requirements of the Featured Artist, Galina will be present in the Gallery on several occasions during the month in case you can't attend the reception. Stop by and talk to Galina about her art.

Each month we try to provide you with notifications

of as many local art events as possible including Calls for Entry and to promote the shows and exhibits of our members. This month you will find quite a few notifications of member events and accomplishments. So please take the time to look at them and visit the shows if possible. It's always fun to see what your fellow members are doing.

Please also remember that this month we have our quarterly Social Get Together at the Gallery on Wednesday, February 11. This is in lieu of our monthly meeting for February. We will resume our regular schedule of meetings at Washington ArtWorks on Wednesday, March 11. The Winter Social Get Together will be from 6:30 to 8:30 at the MAA Gallery in Westfield Wheaton Mall. There will be added excitement at this event with

the Annual Valentine Card Contest and the drawing for our Featured Artists for May through September of 2015. Please bring something sweet or savory to share and something to drink. I look forward to seeing you there.

I know it's only February, but it's never too early to begin thinking about your Kensington "Paint the Town" piece and, of course, your other entries for the show. This year we will be implementing some improvements to our delivery, registration and pick-up processes with an eye toward making participation as quick and easy as possible. We will also be adding some new elements to the show that we think will enhance an already great local art show. Details of those changes will be made available in the coming months so

watch for that.

Lastly, each month we provide you with a calendar of Upcoming Events. It's a detailed list of the times and locations for meetings, receptions, shows, and other art opportunities. Print out the schedule and use it to help you keep track of all of the events that will be coming up. In this edition, we have listed the dates for the Featured Artist shows at the Gallery for the rest of 2015. If you are interested, get your name in the jar at the Gallery and maybe you will be selected at the upcoming Winter Social Get Together. That's all of the news for now. Keep painting!!

Michael Shibley

*MAA—providing art opportunities to local artists for over 60 years.*

## MAA Meeting & Newsletter Reminder february 11 , 2015

In lieu of our regular monthly meeting we will be holding our Winter Social Get-Together in the Gallery on Wednesday, February 11 from 6:30 – 8:30 and will include a Valentine Card Contest. Bring something sweet or savory to share and something to drink.

Our regular meetings at Washington ArtWorks will resume on Wednesday, March 11 beginning at 6:30 for social time with the meeting beginning at 7:00 PM.

The deadline for submissions for the March newsletter is February 20.



*Alnwick Castle, by J.M.W. Turner*

Artist  
Quote  
of the  
Month

*“My business is to paint what I see, not what I know is there.” — J.M.W. Turner*

## Member Art News

**M**AA Members, **Cathy Hirsh, Elizabeth Stecher,** and **Vicky Surles** will be displaying their work in the Brookside Gardens Visitor Center, beginning on February 9 and running through March 22. Unfortunately, the construction in the Visitor Center parking lot is still ongoing so those going to the Visitor Center should park in the parking lot by the Conservatory. The Visitor Center is then a short walk away using the paved paths or there are frequent shuttles between the Conservatory and the Visitor Center provided by garden staff. Cathy, Elizabeth, and Vicky hope you will be able to visit their exhibit. If you would like to meet them there, just contact them at: [hirshcathy@gmail.com](mailto:hirshcathy@gmail.com), [estecher7@verizon.net](mailto:estecher7@verizon.net), or [vsurlesgraphics@comcast.net](mailto:vsurlesgraphics@comcast.net).

**Michael Shibley** will be having a joint show with local photographer Henry Friedman at the Ohr Kodesh Congregation lobby beginning Sunday, February 22 and running through March 3. The show, entitled "Double Exposure" will feature the black and white photography of Henry Friedman and Michael's watercolors and oils. In order to create a link between the black and white and the color elements of the show, Michael's display will include color interpretations of two of Henry's photographs. There will be a reception the lobby of Ohr Kodesh on Sunday, February 22 beginning at 7 PM. Ohr Kodesh Congregation is located at 8300 Meadowbrook Drive, Chevy Chase, MD 20815.



*Looking Up, by April Rimpo*

**April Rimpo** has three paintings on exhibit at the State Office Building on St. John's Street in Annapolis, Maryland. They were on exhibit for the Governor's Inauguration on January 21st and will remain on display until April 13.

**Lis Zadavec** has won the Friends Choice Award at the Franklin Park Arts Center's Black & White Show for her piece 'The Love in Her Eyes' which was on display during the month of January. She has also been juried into the Colored Pencil Society of America's Explore This exhibit for her piece 'Fascinations', that can be viewed online starting February 1st. Also her full-length step-by-step article about creating 'Lovies At the Gate', a piece she created for the Kensington Labor Day Show, was published this January in Ann Kullberg's Colored Pencil magazine. This year she will have a solo exhibit with the Loudoun County Public Libraries during April and May at the Ashburn Branch Library.



*Tall Ship Gloria, by April Rimpo*

**Jennifer Kahn Barlow's** artwork will be featured in an exhibit entitled "The Artists' Palette," that will run from February 10 - April 6, 2015 at the Bodzin Art Gallery, Jewish Community Center Northern Virginia (JCCNV) in Fairfax, VA. The exhibit will run in conjunction with The Art of Jewish Food, an inaugural event presented by the JCC reflecting the varied Jewish tastes, interests and connection with food, both ecumenical and secular. Jennifer's work, along with two others reflects their varied connection through

**Bob and Kay Fuller** would like you to be aware of an opportunity for Artists. It's the Capitol Hill Art League's Annual Open Call. The theme of the show this year is Food for Thought. This show is open to all DC Metro artists. The deadline for entry is midnight, February 10th. Bob and Kay challenge everyone to enter this delicious show. Bonny Wolf, of NPR's weekend edition will be the juror. For more information go to: <http://www.caphillartleague.org/?cat=2> or contact Kay Fuller at [cfuller432@aol.com](mailto:cfuller432@aol.com).

SEE PAGE SIX

## Member Art News

FROM PAGE FIVE

the creation of images and implements that surround the presentation and serving of food that is so prevalent in our Jewish experience. The opening reception will be held on February 10 at 6:00 PM.

MAA artists **Barbara Denison, Janet Fox, Max Leason,** and **Marian MacKerer** are currently showing their art work at Amici Miei restaurant. We are happy to report that Barbara sold two of her paintings and Marian sold one of her painting sets. Congratulations, Barbara and Marian! The show runs through April 12, 2015. Amici Miei is located at 1093 Seven Locks Road in Potomac, MD in the Potomac Woods Plaza.



*Above right & above: Reception at Amici Miei*

## MAA Officer Job Descriptions

**A**s mentioned in the President's Message, we will be publishing the job descriptions for the MAA Board of directors over the next couple of months so that everyone can familiarize themselves with what each job requires. This month we feature the President; the First Vice President for Programs; and the Second Vice President for Shows.

### President:

The President is the chief executive officer of MAA, presides over all meetings of MAA and its Board, and is responsible for carrying out the programs and policies established by the MAA Board and the MAA membership.

### First Vice President (Programs):

This position is responsible for the regular monthly programs (normally October through May) with the exception of the annual Winter Get-Together (February) and the December holiday party (handled by the Activities Committee). If necessary, the first vice president will also temporarily assume the role of President until another can be elected if a permanent vacancy occurs.

### Second Vice President (Shows):

This position is responsible for the administration, conduct and overseeing of all MAA shows. The second vice president is assisted in this responsibility by show chairpersons and other members. In particular, the Special Shows Coordinator, responsible for finding and administering MAA smaller show venues is part of the Second Vice President's organizational team and also stands for election.

Like any organization, there are a lot of moving parts that support the operations of MAA. Hopefully, you will read the descriptions and put your name forward either at the upcoming elections or at some point in the future.

## ARTIST SERVICES

**M**AA Member **Melissa Miller** has many new Blick heavy duty hardwood stretchers that she would like to sell. If you are interested in purchasing some of the stretchers, please contact Melissa at [melismill@yahoo.com](mailto:melismill@yahoo.com).

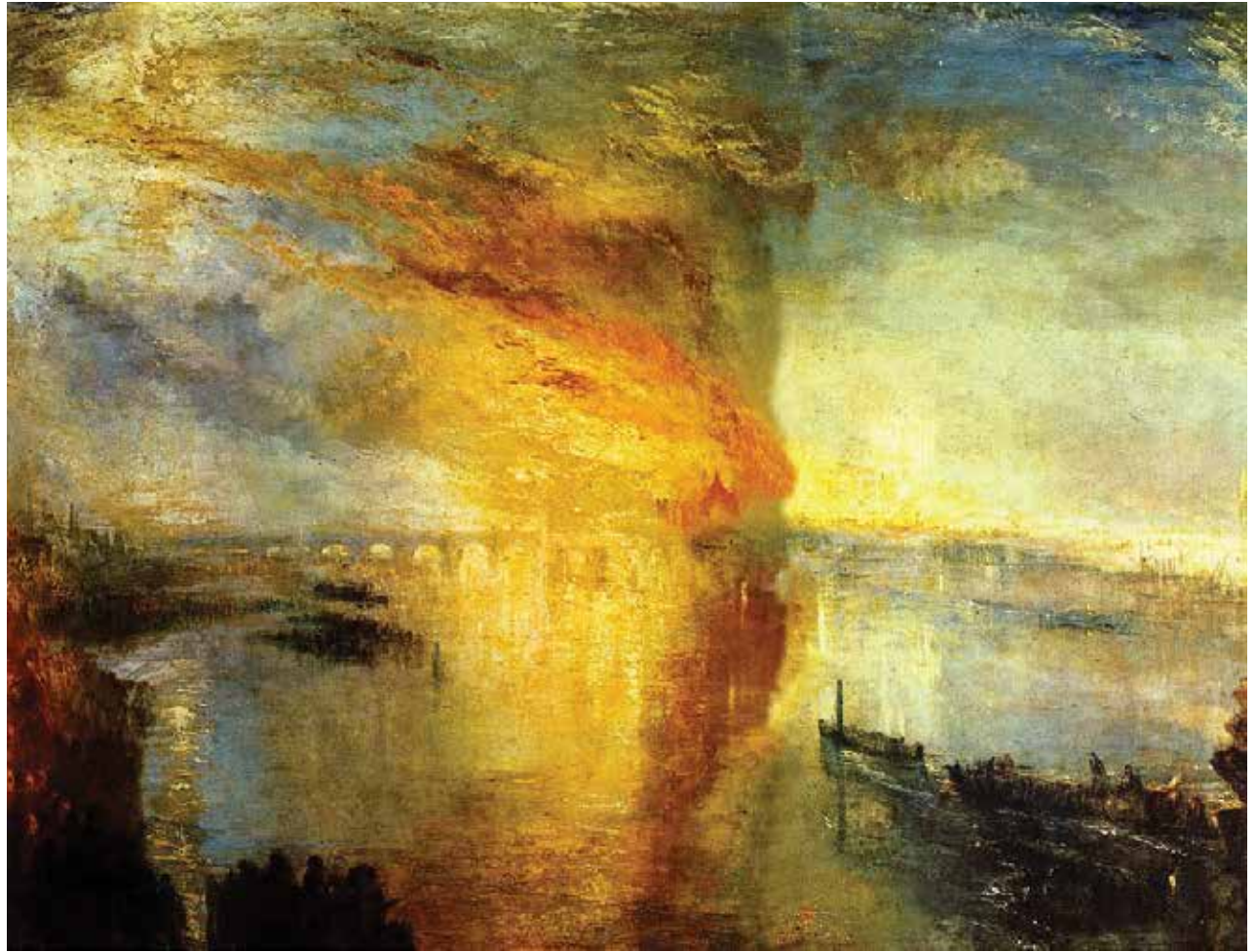
## Movie Review

# “Mr. Turner”

Joseph Mallard William Turner was an 18th century English landscape painter. Most commonly referred to in modern times as J.M.W. Turner, his work caused quite a stir in the art world of his time. In fact, the British royal family refused to have any of his work displayed in their extensive collections. Queen Victoria was apparently quite appalled with his work and made clear her objections. The movie entitled “Mr. Turner” is a 2014 British, French and German biographical film that was first released at the 2014 Cannes Film Festival. The role of J.M.W. Turner is played by Timothy Spall. It is now playing in theaters throughout the Washington area. The film goes

to great lengths to depict the complicated nature of Turner.

The movie takes an emotional and, at times, a somewhat dark look at the last 25 years or so of Turner’s life and takes the viewer through Turner’s struggles with the death of his father; his rather unusual relationship with his housekeeper; and, his relationships with other people including those with other prominent artists of the time including John Constable. The thread of the movie is not so much a continuous story as it is a set of vignettes covering various aspects of Turner’s later life. The movie’s director Michael Leigh described Turner as “a great artist: a radical, revolutionary painter.”



*Burning of the House of Lords, by J.M.W. Turner*

He said, “I felt there was scope for a film examining the tension between this very mortal, flawed individual, and the epic work, the spiritual way he had of distilling the world.” (From Wikipedia.) There are some

very good individual acting performances among the key players as they attempt to depict the evolution of their relationships with Turner.

While the cinematography vividly presents the stun-

ning English landscape that was Turner’s favorite subject, there is disappointingly little focus or display of his actual artwork. There are, however, two or three wonderfully interesting scenes of Turner interact-

ing with his fellow artists at local art Salons. As an historical and biographical film it conveys the complicated nature of an artist who was a unique character and perhaps ahead of his time.

REMEMBER  
THESE:

# UPCOMING dates

## February:

### February 11:

Winter Social Get-Together, MAA Gallery, Westfield Wheaton, 6:30 – 8:30. Valentine Card Contest, drawing for Gallery Featured Artists, May through September. Bring something sweet or savory to share and something to drink.

### February 20:

Deadline for Newsletter Input

## March

### March 11:

Monthly Program Meeting, Washington ArtWorks, 6:30 – 8:30 pm.

## April

### April 8:

Monthly Program Meeting, Washington ArtWorks, 6:30 – 8:30 pm.

### April-July:

Amici Miei Spring Show, Online Registration deadline, April 9, midnight; show hanging April 17, 3 pm; reception, April 19, 3-5 pm; show midpoint switch, May 24, 3 pm; show end, July 12.

### April-July:

WSSC Management Suite Spring Show, Online Registration deadline, April 9, midnight; show hanging April 12, 3 pm; show end, July 17.

## May

### May 13:

Monthly Program Meeting, Washington ArtWorks, 6:30 – 8:30 pm.

## July:

### July 8:

Summer Social Get-Together, MAA Gallery, Westfield Wheaton, 6:30 – 8:30. Drawing for Gallery Featured Artists, October through March. Bring something sweet or savory to share and something to drink.



## MAA GALLERY SHOWS AND DATES

The Gallery is open 7 days/per week—Monday through Saturday, 11am to 8 pm and Sunday, 11 am to 7 pm. To have work in the Gallery for sale in a monthly show, you need to be a current MAA member, “Gallery-sit” at least two shifts (8-10 hours) during the show, and pay a \$10 monthly participation fee. If, in addition to “wall” pieces, you want to display bin work and cards, there is an additional \$25 annual fee. For works sold, MAA takes its standard 25% commission. If you’ve not previously shown in the Gallery, you must take a Gallery training class. If you are interested, please review the FAQ: MAA Gallery piece on the website Resources page and contact Cathy Hirsh at [hirshcathy@gmail.com](mailto:hirshcathy@gmail.com) to receive the latest training schedule.

## February: Featured Artist:, Galina Kolosovskaya

Information about pieces (title, media, price) registered online by Friday, 1/30

Drop-off (or pickup for the previous show)—Sunday 2/1 5-7 pm or Monday 2/2, 10-noon

Show hanging – Monday 2/2 afternoon.

Show opening reception– Sunday 2/8, 1-5 pm

First day of show—Tues, 2/3; Last day of show— Sunday, 3/1

## March: Featured Artist, Barrie Ripin

Information about pieces (title, media, price) registered online by Friday, 2/27

Drop-off (or pickup for the previous show)—Sunday

SEE PAGE NINE



REMEMBER  
THESE:

# UPCOMING dates

## FROM PAGE EIGHT

3/1 5-7 pm or Monday 3/2, 10-noon  
Show hanging – Monday 3/2 afternoon.  
Show opening reception– Sunday 3/8, 1-5 pm  
First day of show—Tues, 3/3; Last day of show—  
Sunday, 3/29

## April: Featured Artist: TBD

Information about pieces (title, media, price) registered online by Friday, 3/27  
Drop-off (or pickup for the previous show)—Sunday 3/29 5-7 pm or Monday 3/30, 10-noon  
Show hanging – Monday 3/30 afternoon.  
Show opening reception– Sunday 4/12, 1-5 pm  
First day of show—Tues, 3/31; Last day of show Sunday, 5/3

## May: Featured Artist: TBD

Information about pieces (title, media, price) registered online by Friday, 5/1  
Drop-off (or pickup for the previous show)—Sunday 5/3 5-7 pm or Monday 5/4, 10-noon  
Show hanging – Monday 5/4 afternoon.  
Show opening reception– Sunday 5/17, 1-5 pm  
First day of show—Tues, 5/5; Last day of show—  
Sunday, 5/31

## June: Featured Artist, TBD

Information about pieces (title, media, price) registered online by Friday, 5/29  
Drop-off (or pickup for the previous show)—Sunday 5/31 5-7 pm or Monday 6/1, 10-noon  
Show hanging – Monday 6/1 afternoon.  
Show opening reception– Sunday 6/7, 1-5 pm  
First day of show—Tues, 6/3; Last day of show—  
Sunday, 6/28

## July: Featured Artist: TBD

Information about pieces (title, media, price) registered online by Friday, 6/26  
Drop-off (or pickup for the previous show)—Sunday 6/28 5-7 pm or 6/28, 10-noon  
Show hanging – Monday 6/28 afternoon.  
Show opening reception– Sunday 7/12, 1-5 pm  
First day of show—Tues, 6/29; Last day of show—  
Sunday, 8/2

## August: Featured Artist: TBD

Information about pieces (title, media, price) registered online by Friday, 7/31  
Drop-off (or pickup for the previous show)—Sunday 8/2, 5-7 pm or 8/3, 10-noon  
Show hanging – Monday 8/3 afternoon.  
Show opening reception– Sunday 8/9, 1-5 pm  
First day of show—Tues, 8/4; Last day of show—  
Sunday, 8/30

## September: Featured Artist: TBD

Information about pieces (title, media, price) registered online by Friday, 8/28  
Drop-off (or pickup for the previous show)—Sunday 8/30 5-7 pm or 8/31, 10-noon  
Show hanging – Monday 8/31 afternoon.  
Show opening reception– Sunday 9/13, 1-5 pm  
First day of show—Tues, 9/1; Last day of show—  
Sunday, 9/2

## October: Featured Artist: TBD

Information about pieces (title, media, price) registered online by Friday, 9/25  
Drop-off (or pickup for the previous show)—Sunday 9/27 5-7 pm or 9/28, 10-noon  
Show hanging – Monday 9/28 afternoon.  
Show opening reception– Sunday 10/4, 1-5 pm  
First day of show—Tues, 9/29; Last day of show—  
Sunday, 11/1

## November: Featured Artist: TBD

Information about pieces (title, media, price) registered online by Friday, 10/30  
Drop-off (or pickup for the previous show)—Sunday 11/1 5-7 pm or 11/2, 10-noon  
Show hanging – Monday 11/2 afternoon.  
Show opening reception– Sunday 11/8, 1-5 pm  
First day of show—Tues, 11/3; Last day of show—  
Sunday, 12/6

SEE PAGE TEN

REMEMBER  
THESE:

# UPCOMING dates

FROM PAGE NINE

## December: Featured Artist: TBD

Information about pieces (title, media, price) registered online by Friday, 12/4

Drop-off (or pickup for the previous show)—Sunday 12/6 5-7 pm or 12/7, 10-noon

Show hanging – Monday 12/7 afternoon.

Show opening reception— Sunday 12/13, 1-5 pm

First day of show—Tues, 12/8; Last day of show—Sunday, 1/2

## Welcome to New Members

We are thrilled to tell you that we added nine new members to our MAA family since the January newsletter was released. Thanks to all who spoke to their artist friends about the benefits of joining MAA.

Please welcome:

**Deborah Cannon**

**Gertie Duque**

**Michelle Gagne**

**Indrani E.Gnanasiri**

**Sy Kasambira**

**Pedro Sánchez-López**

**Tom McCafferty**

**Raya Salman**

**Patrick Smith**

**Remember:** membership is the lifeblood of the association. Recruit a new member today!

We apologize to any members whose names are not listed. We will catch up with you next month.



## GALLERY NEWS AND NOTES

This part of the newsletter is designed to provide you with art news and information about interesting shows at the many local art galleries. If you are aware of an event, news or an exhibit, large or small, that you think would be of interest, please send an email to JULevineRN@aol.com. If going to one of the galleries you have not been to we urge that you contact the gallery or its web site to ask about directions and transportation. Many of the galleries in DC are accessible via Metro and parking can be a problem. Unless otherwise noted, admission is free.

### The Phillips Collection

1600 21st St., NW, Washington, DC 20009  
Information- 202-387-2151  
\$12 -adults, \$10 -62 and over and students, free for members and visitors 18 and under

### O’Keeffe and Friends: Dialogues with Nature

September 11, 2014 - May 31, 2015

The gallery has on loan from the NGA O’Keeffe’s famed paintings Jack-in-the-Pulpit IV (1930) and No. VI (1930). Along with her contemporaries in the early to mid -20th Century, that include Alvin Langdon Coburn, Arthur Dove, Marsden Hartley, and John Marin, the visitor can dip into the personal combination of abstraction and representationalism that made these artists some of the finest of their generation.

### Intersections

Intersections, a series of projects explores the way two, sometimes radically,



*The Nativity with the Infant Saint John, Pietro di Cosimo*

different objects relate and join together. Each project explores new traditions, modern and contemporary art practices, and museum spaces and artistic interventions. It branches into both traditional and non-tradition exhibition spaces with some surprising and intriguing results.

### The National Gallery of Art

4th and Constitution Avenue NW, Washington, DC 20565  
General Information: (202) 737-4215  
(Unless otherwise noted all exhibits are in the West

Wing; the East Wing is currently closed for renovation.)

### Piero di Cosimo: The Poetry of Painting in Renaissance Florence

February 1, 2015 – May 3, 2015

This 40 work exhibition is the first ever by this premier Italian Renaissance painter. Many of the works have undergone their first conservation treatment just prior to the show. The paintings are both religious and mythological in subject matter.

SEE PAGE ELEVEN

## GALLERY NEWS AND NOTES

FROM PAGE TEN

### **El Greco in the National Gallery of Art and Washington-Area Collections: A 400th Anniversary Celebration**

November 2, 2014 – February 16, 2015

The Greek artist Doménikos Theotokópoulos (1541-1614)- hence his professional name- spent his career in Spain. He is considered to be one of Spain's most formidable Christian religious artists. The exhibit will include Laocoön, his only known mythological work.

### **Hirshhorn Museum and Sculpture Garden**

Independence Avenue at Seventh Street SW Information: 202-633-1000 or 202-633-5285 (TTY) This gallery focuses on contemporary artists.

### **Speculative Forms**

January 1, 2015-no end date given

"Inspired by the philosophical notion of "Speculative Realism," which emphasizes an equal relationship between subject, object,

and space, the exhibition highlights the importance of installation and the viewer's eye and body in relation to the object."

### **Black Box Series: Ragnar Kjartansson**

October 28, 2014–April 19, 2015

### **The Sackler Gallery/ The Freer Gallery**

1050 Independence Avenue, SW. 202-633.1000 The joint galleries house one of the world's great collection of Asian arts.

### **Unearthing Arabia: The Archaeological Adventures of Wendell Phillips**

October 11, 2014–June 7, 2015

Timna, the capital of the once-prosperous Qataban kingdom, and Marib, the reputed home of the legendary Queen of Sheba is the focus .

### **Zen, Tea, and Chinese Art in Medieval Japan**

December 13, 2014–June 14, 2015-Freer Gallery of Art

### **Nasta'liq: The Genius of Persian Calligraphy**

September 13, 2014– March 22, 2015- Sackler Calligraphy, the art of beautiful writing was, and is, a consummate art form in most of the Middle Eastern world. This particular form, developed in Iran, came into being in the 14th Century. Four of the greatest master calligraphers-Mir Ali Tabrizi, Sultan Ali Mashhadi, Mir Ali Haravi, and Mir Imad Hasani- are featured in this show.

### **Oribe Ware: Color and Pattern Come to Japanese Ceramics**

December 13, 2014–June 14, 2015-Freer Gallery of Art

### **Style in Chinese Landscape Painting: The Yuan Legacy (Freer) and The Traveler's Eye: Scenes of Asia(Sackler)**

November 22, 2014–May 31, 2015-Freer

### **National Museum of the American Indian**

Fourth Street & Independence Ave, S.W. Washington, DC 20560 202-633-1000

### **Commemorating Controversy: The Dakota-U.S. War of 1862**

January 14, 2015–December 29, 2015

"In the late summer of 1862, a war raged across southern Minnesota between Dakota akicitas (warriors) and the U.S. military and immigrant settlers. In the end, hundreds were dead and thousands more would lose their homes forever. On December 26, 1862, 38 Dakota men were hung in Mankato, Minnesota, by order of President Abraham Lincoln. This remains the largest mass execution in United States history. The bloodshed of 1862 and its aftermath left deep wounds that have yet to heal. What happened 150 years ago continues to matter today." NMAI catalog

### **National Museum of African Art**

950 Independence Avenue, SW Washington, DC (202) 633-1000

### **Conversations-African and African American Artworks in Dialogue**

November 9, 2014-early 2016

Using the museum's own collection of African works and works from the Camille O. and William H. Cosby Jr. collection, the show is a dialogue between cultures. It will give you a chance to see both the similarities and the differences between work conceived in African cultures and that of the United States. It will also give you a chance to see a side of Dr. Cosby not as often on view as his humor.

### **Chief S.O. Alonge: Photographer to the Royal Court of Benin, Nigeria**

September 17, 2014 – September 13, 2015

SEE PAGE THIRTEEN

## GALLERY NEWS AND NOTES

FROM PAGE ELEVEN

### **Visions from the Forests: The Art of Liberia and Sierra Leone**

William Siegmann (1943-2011), former curator of African art at the Brooklyn Museum lived in Sierra Leone between 1965 and 1987 where he amassed this wonderful and varied collection. It will teach the attendees much about the traditional culture of the country between the 15th and 18th centuries.

### **Renwick Gallery**

1661 Pennsylvania Ave NW, Washington, DC (202) 633-7970  
The Renwick's main focus is on the decorative arts.

### **National Portrait Gallery/Smithsonian American Art Museum**

8th St. at F St., NW, Washington, DC (202) 633-1000 (voice/tape) The National Portrait Gallery (NPG) and the Smithsonian American Art Museum (SAAM) both contain many permanent exhibits that easily allow

for many visits. These two connected galleries, which are part of the Smithsonian Institute, form a national treasure of American paintings and sculpture. The buildings just reopened recently after a nearly 6 year renovation which has restored them to their original states. This included restoration of the exquisite stained glass windows in both ceilings and walls, and the repair of the beautiful floor and wall tiling.

### **Time Covers the 1960s (NPG)**

September 26, 2014-August 9, 2015

### **Portraiture Now: Staging the Self**

August 22, 2014- April 12, 2015—NPG

This show will give its visitors a glimpse at how four contemporary Latino artists see themselves and fellow Latinos in the United States. David Antonio Cruz, Carlee Fernandez, María Martínez-Cañas, Rachelle



---

### **National Portrait Gallery, Now Staging the Self**

---

Mozman, Karen Miranda Rivadaneira, and Michael Vasquez are the featured painters in this exhibit.

### **Mingering Mike's Supersonic Greatest Hits**

February 27, 2015- August 2, 2015

### **Richard Estes Realism**

October 10, 2014 -February 8, 2015  
October 10, 2014, 6:00 PM-Curated talk and question/answer session with Estes.

Think you see it? Well, look again. Estes, who is part of an international collection of artist known as the photorealists is will

show you why you have to look closely. A feast for the eyes.

### **The Singing and the Silence: Birds in Contemporary Art**

October 31, 2014-February 28, 2015

### **National Museum of Women in the Arts**

1250 New York Avenue, N.W., Washington, DC 20005-3970 202-783-5000, 1-800-222-7270

### **Sculpture Project: Magdalena Abakanowicz**

September 27, 2014-September 27, 2015

The five works by this

internationally renowned Polish sculptor allow the viewer to experience the artist's response to tyranny and her fellow humans. Her style is spare and clean. It is also very powerful; it may be silent yet it speaks loudly.

### **Picturing Mary: Woman, Mother, Idea**

December 5, 2014-April 12, 2015

Mary is often thought of as the ideal woman and that is precisely what this show explores. It looks at how she was seen as in various roles such as daughter, cousin, wife, mother, and grieving parent. In an unusual break, the NMWA this show has male artists including Fra Filippo Lippi, Botticelli, Michelangelo, Pontorno, and Tiepolo.

### **Doris Lee: American Painter and Illustrator**

November 17, 2014-May 8, 2015

Doris Emrick Lee (1905-1983) an American painter

SEE PAGE FOURTEEN

## GALLERY NEWS AND NOTES

FROM PAGE TWELVE

and illustrator completed murals in post offices, participated in the Carnegie Institute, did illustrations for Life magazine and children's books, and taught at Michigan State University. Much of her work is in the naif style.

### OTHER SHOWS and GALLERIES

#### Walters Gallery

600 North Charles Street  
Baltimore MD  
(410) 547-9000  
Wednesday through Sunday, 10 A.M. — 5 P.M.

#### From Pen to Press: Experimentation and Innovation in the Age of Print

November 22, 2014-April 12, 2015  
Gutenberg's Bible, printed in 1455 was as great a change as is going on now with the change from print to digital. Explore the implications and experiments as books moved from hand written to printed versions. Just as electronic and digital communication is once

again opening the world to new readers, so too did printing.

#### From Ryile to Raphael: The Walters Story

October 26, 2014-April 17, 2016  
The museum is celebrating its 80th anniversary. William and Henry Walters father and son who founded and ran the railroad Atlantic Coast Line Company used much of their wealth to collect artwork to eventually be displayed in a museum setting open to the Baltimore public. This 200 work exhibition includes many of those works in addition to photos and historical documents allowing the visitor to explore the history of both the donors and the museum itself.

#### Goldman Art Gallery

The Jewish Community Center of Greater Washington  
6125 Montrose Road,  
Rockville, MD 20852  
301-881-0100

Monday, Wednesday, Friday-9 a.m. – 5 p.m.  
Tuesday, Thursday- 9 a.m. – 7 p.m. Sunday 10 a.m.-2 p.m

#### Rough Around the Edges: Ronni Jolles

February 8, 2015-March 15, 2015 ; Reception- March 8, 2015 2:00-4:00 PM  
Jolles doesn't use paints to make her works which encompass many subjects, she uses paper, and not just one kind. She gathers papers of all sorts from around the world. It allows her to create bas relief work with multiple textures.

#### BlackRock Center for the Arts

12901 Town Commons Drive, Germantown, MD 20874 301.528.2260 (administrative offices)

#### Transformations of Brush & Paper: Kit-Keung Kan, Freda Lee-McCann, and In-soon Shin

An Installation Exploring New Directions in Oriental Brush Art  
February 5, 2015- Febru-

ary 28, 2015 ; Calligraphy Demonstration, Meet the Artist Reception  
Saturday, February 7, 2015, 2:00 PM- 5:00 PM- Main Gallery

#### A Point in Time: Photographic Works by Ronald Beverly

February 5, 2015- February 28, 2015; Reception-Saturday, February 7, 2015, 2:00 PM- 5:00 PM, Terrace gallery

#### The Mansion at Strathmore

10701 Rockville Pike North Bethesda MD 20852  
For more information call (301) 581-5125. Free and Open to the Public

#### Ice Age on the Potomac: Works by Stephen Schiff

January 10, 2015 - March 1, 2015

January 10, 2015 - March 1, 2015; Children's and Adult's talks and tours,

January 24, 2015, check with Strathmore for times.

#### Adah Rose Gallery

3766 Howard Ave Kensington, Maryland 20895 (301) 922-0162 email-adahrose-gallery@gmail.com

#### "Your Memories, Your Sentiments, Your Wishes, Your Secrets"

Jim Condron and Kristen Liu  
January 15, 2015- February 28, 2015; Opening Vernissage-January 17, 2015 6:30-8:30, Music by Teraplane

#### Artique Underground

228 N Market St, Frederick, MD 21701 · (240) 575-1915

#### Hillyer Art Space Exhibitions

9 Hillyer Ct. NW, Washington, D.C. 20008  
Mon 12-5 , Tues-Fri 12-6, Sat 12-5 ,and by appointment; 202-338-0680; gallery@artsandartists.org

SEE PAGE FOURTEEN

## GALLERY NEWS AND NOTES

FROM PAGE THIRTEEN

**Andrea Barnes, Bethesda; Linda Hesh, Alexandria; Jason Yen, Washington, DC**

February 6, 2015- February 28, 2015

**TAG of Frederick (formerly The Artists' Gallery of Frederick)**

4 East Church Street, Frederick, MD 21701 301-696-8187 www.the-artists-gallery.org Fri-Sun 12-5, or by appointment.

**"Le Salon at TAG 2015"**

February 3, 2015-February 28, 2015

This is an open unjuried show. The gallery will also be celebrating its 25th anniversary.

**VisArts at Rockville**

155 Gibbs Street, Rockville, MD 20850 (301) 315-8200

**Laini Nemett: East of Sheridan**

January 28, 2015-March 1, 2015; Opening Reception: January 30, 2015-12: AM (Gibbs Street Gallery)

*This month this gallery is sponsoring a film/video competition (Kaplan Gallery)*

**Nancy Daly: About 286,000,000 Results**

January 23, 2015- February 22, 2015 ; Opening Reception: January 30 - 7:00 PM- 9:00 PM (Common Ground Gallery)

## MAA Board for 2014-2015

**President**

**Michael Shibley**

301-807-6890  
mfs-art@comcast.net

**e-Newsletter Editor**

**Michael Shibley**

301-807-6890  
mfs-art@comcast.net

**Membership Committee Chair**

**Sandra Perez-Ramos**

301-625-4889  
sandraperezramos@hotmail.com

**Outreach Committee Chair  
Past President**

**Laura-Leigh Palmer**

240-354-5454  
Laura.leigh@asapgraphics.com

**1st Vice President, Programs  
Pauline Rakis**

301-622-1748  
prakis1040@aol.com

**e-Newsletter Editor (design)  
Natalie Falk**

301-384-0417  
nmfalk@comcast.net

**Gallery Committee Chair  
Past President**

Cathy Hirsh  
301-622-0546  
hirshcathy@gmail.com

**Supporting Staff  
Accounting Advisor:**

**Sue Meyer**  
301-384-4777  
susanmeyercpa@verizon.net

**2nd Vice President, Shows  
Elizabeth Stecher**

301-593-8305  
estecher7@verizon.net

**e-Newsletter Reporter &  
Children's Activities Coordinator**

**Judith Levine**  
301-869-6811  
julevinern@aol.com

**Publicity Committee Chair  
Vicky Surles**

240-604-5377  
vsurlesGraphics@comcast.net

**Web Content Manager  
Past President**

Cathy Hirsh  
301-622-0546  
hirshcathy@gmail.com

**Secretary**

**Julie Smith**

301-570-0416  
spottedpony2@juno.com

**Activities Committee Chair**

**Marcia Bhorjee**  
301-493-4665  
mbhorjee@gmail.com

**Social Media Chair**

**Janet Fox**  
301-326-4327  
jfoxdreamart@aol.com

**Technical Website Manager:**

**Heather Stobo**  
213-321-3919  
hstobo@gmail.com

**Treasurer**

**Barrie Ripin**

301-346-6867  
bripin@verizon.net

**Hospitality Committee  
Chair**

**Roxanne Ando**  
301-622-9541  
PNPPaintbrush@gmail.com

**Special Shows Coordinator**

**Virginie Montet**  
202-285-2329  
vmontet2002@yahoo.com

**Associate Treasurer**

**Behrouz Sarabi**

301-460-2586  
Behrouz.sarabi@gmail.com